



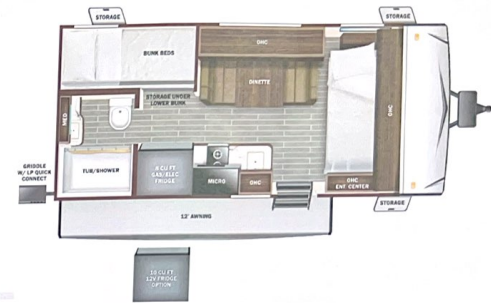
Ethos



Serial #: 1JSPEBBJ7P1RD8064
Model: 20D ETHOS MHB
VIN#: 3C6MRVUG5NE127070
Model Year: 2023 Dealer Name: National Indoor Rv Centers
1205 Bridgestone Parkway
La Vergne, TN 37086
USA

Manufacturer's Suggested Retail Price \$171,900.00

TOTAL AMOUNT DOES NOT INCLUDE STATE AND LOCAL TAXES OR LICENSE FEES. THE PRICE SHOWN ABOVE MAY OR MAY NOT BE REPRESENTATIVE OF THE ACTUAL SELLING PRICE OF SIMILAR RECREATIONAL VEHICLES IN YOUR AREA.



Standard Equipment

THE FOLLOWING ITEMS ARE STANDARD ON THIS MODEL
AT NO EXTRA CHARGE

STANDARD EXTERIOR EQUIPMENT

- RAMS ProMaster 3500 window van
- GVWR- 9,350 lb
- GVWR- 11,500 lb
- 3.6L V6 24V VVT engine
- 8-speed automatic 348TE transmission
- 220 amp alternator
- Aluminum wheels
- Daytime running headlamps
- Power folding/heated side-view mirrors
- ParkSense® rear park assist system
- LT225/75R 16E tires
- 3,500 lb. rear hitch receiver with dual 4/7 pin connector
- 12V chassis battery
- 24 gal. fuel tank (gas)
- Onan® 2,300W generator
- 1,000W inverter
- 30 amp electrical service with detachable power cord
- (2) 12V AGM house batteries
- 180W roof-mounted GoPower® solar panel with integrated control panel
- 15,500 BTU A/C
- 6 gal. propane tank (20 lb.)
- LP quick-connect hookup
- Winterization drain system
- Black tank flush
- Gravity water fill (20T)
- 12V demand water pump
- Water filtration system
- House battery disconnect switch
- Aqua View® SHOWERMiser™ water management system
- Sliding entrance door opening window
- Heated holding tanks (12V pads)
- LED-ill. running boards for cab and entry doors
- (2) 110V exterior outlets
- Portable solar plug
- LED-ill. holding tank valves
- Satellite prep
- Outside shower

CUSTOMER VALUE PACKAGE

- E-Z DRIVE™ Heavy helper springs, SDD premium heavy-duty suspension
- Thule® armoire patio awning with LED light strip
- Thule® roof rack
- Truma Combi Eco Plus water heater and furnace
- Sewer diverter and passenger seats with 6-way lumbar adjustment
- Winegard® Connect 2.0 4G-Wi-Fi digital TV antenna

STANDARD INTERIOR EQUIPMENT

- 7 in. Pioneer® infotainment center with Apple CarPlay® and Android Auto™
- Power windows and door locks
- A/C and cruise control
- Backup camera
- Leather-wrapped steering wheel with integrated controls
- Cab area privacy shade
- Remote keyless entry
- Custom-molded, vinyl-wrapped ABS interior wall panels
- Sliding screen door for entrance door
- Expandable table at entry door with safety grab handle (20T only)
- Soft-touch vinyl ceiling
- High-intensity LED ceiling lights
- Tecnoform® European-style, high-gloss cabinetry
- Ball-bearing drawer guides
- Residential vinyl flooring
- Firefly® Multiplex system
- Sliding vented windows
- Decorative window valances with night roller shades
- Rear magnetic privacy shades
- Removable privacy shade for sliding door window
- Powered roof vent in living area
- (2) cab bucket seats (20A, 20D)
- 32 in. front TV on drop-down bracket (20A, 20D)
- 24 in. living area TV on swivel bracket (20T)
- Cable TV hookup with RG-6 coax
- Collapsible dinette table
- 5.3 cu.ft. ACDC refrigerator (20A, 20D)
- 3.1 cu.ft. ACDC refrigerator (20T)
- Connection microwave
- Stainless steel sink with glass cover and kitchen accessories
- Solid-surface kitchen countertop with pull-out extension
- Pop-up 110V/USB outlet in kitchen
- (2) twin-size beds with adjustable headrests, Froth® sleep system and filler cushion to convert to king-size bed (20T only)
- Under-bed storage (20T only)
- 48 in. x 76 in. convertible sofa bed (20A, 20D)
- Bathroom wardrobe with drawers
- Shower with magnetic curtain surround
- Toilet with foot flush
- Medicine cabinet with mirror
- Powered roof vent in bathroom
- Seatbelts for driver/passenger seats and select cab locations
- Driver and passenger airbags
- Smoke alarm
- Carbon monoxide detector
- Fire extinguisher

Optional Equipment

OPTIONAL EQUIPMENT INSTALLED ON THIS VEHICLE
BY MANUFACTURER

Base price	160,650.00
Autumn	n/c
USA Standards	n/c
Customer Value Package	11,250.00

UNIT TOTAL 171,900.00

DEALER INSTALLED OPTIONS

DIMENSIONS

Exterior height: 111.00"
Exterior width: 83.00"

CAPACITIES

Fresh water tank (gals.): 25.00
Gray water tank (gals.): 33.00
Black water/toilet tank (gals.): 12.00
Propane (lbs.): 0
Propane (gals.): 0
Water heater (gals.): 0.00

TIRES

Tire size (front): LT225/75R16C
Tire size (mid): LT225/75R16C
Tire size (rear): LT225/75R16C

Some dimensions may be rounded and may vary from the actual dimensions

***Weights may be estimated calculations and may vary from the actual weight

- refer to the vehicle weight labels for actual weights***

Floorplans, features and specifications are subject to change without notice.