



Launch

Serial #: 1JSPEBBH5P1SY8118
Model: 19Y LAUNCH MHB
VIN#: W1W4EBVY5NT104779
Model Year: 2023 Dealer Name: National Indoor Rv Centers
1205 Bridgestone Parkway
La Vergne, TN 37086
USA



Manufacturer's Suggested Retail Price \$231,375.00

TOTAL AMOUNT DOES NOT INCLUDE STATE AND LOCAL TAXES OR LICENSE FEES. THE PRICE SHOWN ABOVE MAY OR MAY NOT BE REPRESENTATIVE OF THE ACTUAL SELLING PRICE OF SIMILAR RECREATIONAL VEHICLES IN YOUR AREA.

Standard Equipment

THE FOLLOWING ITEMS ARE STANDARD ON THIS MODEL
AT NO EXTRA CHARGE

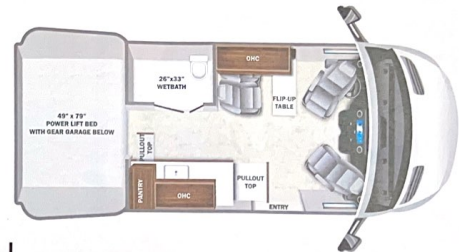
- STANDARD EXTERIOR EQUIPMENT**
- Mercedes-Benz® Sprinter 2500 4x4 van with 144 in. wheelbase
 - GVWR: 9,050 lb.
 - GVWR: 13,500 lb.
 - 3.0L V6 engine with 188HP and 325 ft.-lb. torque
 - 7-speed automatic transmission
 - 200 amp alternator
 - Daytime running headlamps
 - Power folding/heated side-view mirrors
 - 6,000 lb. rear hitch receiver with 7 pin connector
 - 12V chassis battery
 - 24.5 gal. fuel tank (diesel)
 - 8.8 gal DEF Tank
 - 48V, 210 amp hour smart lithium battery providing 100WH hours of power
 - 3,500W inverter
 - 2nd 48V alternator dedicated to lithium battery
 - 30 amp electrical service with detachable power cord
 - 200W of roof-mounted solar panels
 - Slow charge solar panel for chassis battery
 - Utility center with water controls and outside hose
 - City water connection
 - Winterization drain system
 - 12V demand water pump
 - Water filtration system
 - House battery disconnect switch
 - Aqua View® SHOWER/SEWER water management system
 - Heated grey tank (12V pad) with skid plate
 - Interior-mounted fresh water tank
 - LED light running boards for cab and entry doors
 - 110V exterior outlet
 - Portable solar plug
 - LED light holding tank valves
 - Side screen door with magnetic and zipper close off
 - Rear screen door with roll-up and black out capabilities
 - Fold-down exterior table
 - On-board air compressor with front and rear chucks
 - Remote keyless entry
- CUSTOMER VALUE PACKAGE**
- E-Z DRIVE™: Konig shocks, heavy-duty rear stabilizer bar
 - Carefree® armless patio awning with LED light strip and wind sensor
 - Double roof rack and moveable roof ladder
 - Front and rear wind deflectors with front LED light bar
 - Hydronic heating system with LED touchscreen control
 - 48V Coleman®-Mach® 10 air conditioner
 - Black aluminum wheels with BF Goodrich® All-Terrain T/A® KO2® tires

Optional Equipment

OPTIONAL EQUIPMENT INSTALLED ON THIS VEHICLE
BY MANUFACTURER

Base price	212,250.00
Serenity	n/c
Standard Exterior	n/c
USA Standards	n/c
Customer Value Package	19,125.00

- STANDARD INTERIOR EQUIPMENT**
- 10.25 in. MBUX infotainment center
 - Power windows and door locks
 - A/C and adaptive cruise control
 - Active brake assist
 - Heated power towel driver/passenger seats
 - Smartphone tray with wireless charging
 - Rain-sensing wiper system
 - Lane keeping assist
 - Blind spot assist
 - Traffic sign assist
 - Leather-wrapped tilt steering wheel with integrated controls
 - Cab area privacy shade
 - Custom-molded, vinyl-wrapped ABS interior wall panels
 - Soft-touch vinyl ceiling
 - High-intensity LED ceiling lights
 - Tecnoform® European-style cabinetry
 - Tecnoform® pull-out kitchen countertop extension
 - Parity with Tecnoform® pull-out extension
 - Durable rubber flooring
 - Finely Multiplex system
 - (2) sliding vented windows
 - Removable privacy shade for sliding door window
 - Rear dual-pane acrylic window with cassette shades
 - MaxxAir Deluxe roof vent
 - (2) additional cab bucket seats with slide and recline features
 - BOSS® dual-zone radio with Bluetooth®
 - Collapsible dinette table
 - 3 cu. ft. DC refrigerator
 - Portable induction cooktop
 - Stainless steel sink
 - 110V/125B outlets throughout
 - Drop-down overhead bed with 750 lb. capacity
 - Fiberglass side pods create larger sleeping surface
 - Rear garage under bed with L-track mounts for securing cargo
 - (2) recessed under-bed storage bags
 - RAM® Tough-Trac™ mounts throughout
 - All-in-one wet bath with shower and cassette toilet
 - Removable bamboo shelves in wet bath
 - Powered roof vent in bathroom
 - Retractable clothes line in shower
 - Seatbelts in all seating locations
 - Driver and passenger airbags
 - Smoke alarm
 - Carbon monoxide detector
 - Fire extinguisher



DIMENSIONS

Exterior height:.....121.00"
Exterior width:.....82.00"

CAPACITIES

Fresh water tank (gals.):.....22.00
Gray water tank (gals.):.....20.00
Black water/toilet tank (gals.):.....4.75
Propane (lbs.):.....0
Propane (gals.):.....0
Water heater (gals.):.....0.00

TIRES

Tire size (front):.....LT245/70R17 E
Tire size (mid):.....
Tire size (rear):.....LT245/70R17 E

UNIT TOTAL 231,375.00

DEALER INSTALLED OPTIONS

Some dimensions may be rounded and may vary from the actual dimensions

***Weights may be estimated calculations and may vary from the actual weight

- refer to the vehicle weight labels for actual weights***

Floorplans, features and specifications are subject to change without notice.