

Reatta XL



Serial #: 1JSMEABV3P1PC8061
Model: 40Q2 REATTA XL MHA
VIN#: 4VZAR1D18PC092890
Model Year: 2023 Dealer Name: NATIONAL INDOOR RV CENTERS
1350 HURRICANE SHOALS ROAD
LAWRENCEVILLE, GA 30043
USA



Standard Equipment

Optional Equipment

THE FOLLOWING ITEMS ARE STANDARD ON THIS MODEL AT NO EXTRA CHARGE

OPTIONAL EQUIPMENT INSTALLED ON THIS VEHICLE BY MANUFACTURER

STANDARD EXTERIOR EQUIPMENT

- Spartan® K2 raised-rail chassis
- Cummins® L9 turbocharged 380 HP engine with 1,150 lb.-ft. torque at 1,400 RPM
- Allison® 3,000 MH 6-speed transmission
- Rear-mounted radiator
- 170 amp alternator
- 1,000W engine block heater
- Variable geometry turbo (VGT) engine brake
- Independent front air suspension (IFS) front axle - 14,320 lb. rating
- Rear axle - 22,000 lb. rating
- 4.88 rear axle ratio
- Michelin® 275/80R 22.5 in. tires
- Bilstein® 46mm shocks
- Wireless tire pressure monitoring system (TPMS) with temperature monitoring
- Equalizer™ hydraulic automatic coach leveling
- Remote air connection
- (2) 12V chassis batteries
- 100 gal. fuel tank
- 10 gal. DEF tank
- Spartan® Safehaul tow vehicle air brake system
- 10,000 lb. hitch with 7-pin plug
- Roof: One-piece fiberglass with 3/8 in. plywood decking, 4 in. arched aluminum trusses, insulation and reflective Flexfoil® (R-24)
- Sidewalls: Vacuum-bonded, high-gloss gelcoat with R-8 bead-foam insulation
- Floors: Vacuum-bonded layers of Darco underbelly, a welded aluminum frame, R-9 bead-foam insulation, 3/8 in. Structurwood® and 1/4 in. plywood
- X-Bridge™ bracing welded into chassis frame
- Heated basement storage
- Insulated front and rear caps (R-24)
- Electric-powered slideout rooms
- Onan® 10,000W diesel generator, with automatic start, on slide-out tray
- 2,000W pure sine wave inverter with 100 amp battery charger
- (2) L16 AGM batteries (6V/390 amp hrs. ea.)
- 50 amp power cord on electric powered reel
- Automatic transfer switch with surge protection
- (2) 190W Go Power!® solar panels
- (3) 15,000 BTU A/C units with heat pumps [(2) 15,000 BTU units with heat pumps on 37K]
- Aqua-Hot® 250D hydronic water and heating system with 5 in. LED screen
- Electric radiant floor heating system
- LED-lit fireplace with 5,000 BTU heating element (37K only)
- Sani-Con® macerator holding tank dump system with manual gate valves and manual backup
- Black holding tank sprayer
- City and tank water filtration system
- Carefree® power patio awning with LED lights
- Carefree® power entrance door awning with LED lights
- Carefree® slideout awnings
- Carefree® window awnings
- Frameless, dual-pane, tinted, safety-glass windows
- Grab handle and keypad system for keyless entry
- 43 in. Samsung® 4K UHD Smart TV with tilt, swivel, and extend adjustment
- JBL® radio and speakers with USB port and receptacle
- Heated, remote-control, side-view mirrors with integrated cameras
- Diamond Shield™ front protective film mask
- Halogen high and low beam headlights and fog lights
- Daytime running lights

STANDARD EXTERIOR EQUIPMENT (CONTINUED)

- LED marker lights, turn lights, license plate light, third brake light, accent lights and docking lights
- Porch light
- Mudflap with chrome "Entegra" nameplate
- Winegard® TRAV'LER satellite dish DIRECTV® - standard with USA option
- Winegard® TRAV'LER satellite dish Shaw TV - standard with CSA option
- Winegard Connect 2.0 Wi-Fi/4G antenna
- Exterior utility center
- Slideout basement storage tray
- Sikkens custom full-body paint

STANDARD INTERIOR EQUIPMENT

- Valid™ 12.3 in. digital dash with quad core graphics processor, on-board diagnostics, selector knob and ability to display traditional instrument cluster, 360° camera system or GPS navigation
- Xite™ 360° HD digital camera system
- Xite™ XSG4 infotainment system with 9 in. touchscreen, iGO navigation, Bluetooth®, Sirius XM™ and AM/FM tuner, integrated camera control and house mode whole-coach audio distribution
- Steering wheel with integrated controls for cruise, wipers, radio and Bluetooth® phone functionality
- Manual tilt and telescoping steering column
- Ultra-Vision® one-piece wrap-around tinted windshield
- 32 in. Samsung® LED 1080P Smart TV in front overhead
- 6-way power adjustable driver and passenger seats with power recline
- Powered flush stepwell cover
- Powered adjustable brake and accelerator pedals
- Powered front sun visors and privacy shades
- Firefly multiplex system with 10 in. VegaTouch touchscreen for complete integration of coach controls (mobile app available)
- 50 in. Samsung® 4K UHD Smart TV
- Samsung® sound bar with subwoofer
- Sony® Blu-ray™ player
- Premium furniture
- Hand-laid, woodgrain porcelain tiled floors
- LED interior lighting
- Decorative ceiling feature with integrated accent lighting
- Manual solar day shades and blackout night shades
- Central vacuum system
- Removable screen on entry door
- Window with push out lever operation and screen
- Stainless steel residential refrigerator with ice maker and water dispenser
- Induction cooktop
- 1.5 cu. ft. convection microwave oven
- Solid-surface countertops with stainless steel sink
- Fan-Tastic power exhaust fan with intake
- Slide-out storage tray(s) in overhead cabinet
- King-size pillow-top mattress on tilt bed
- 32 in. Samsung® LED 1080P Smart TV
- Sony® Blu-ray™ player
- Solid-surface countertops with integrated sink
- One-piece fiberglass shower with skylight
- Aqua View SHOWERMISER™ water saving system
- Thetford® Aqua Magic toilet with foot flush
- Fan-Tastic power exhaust fan with intake
- Separate washer and dryer
- Carbon monoxide detector
- Smoke alarm
- Storage safe

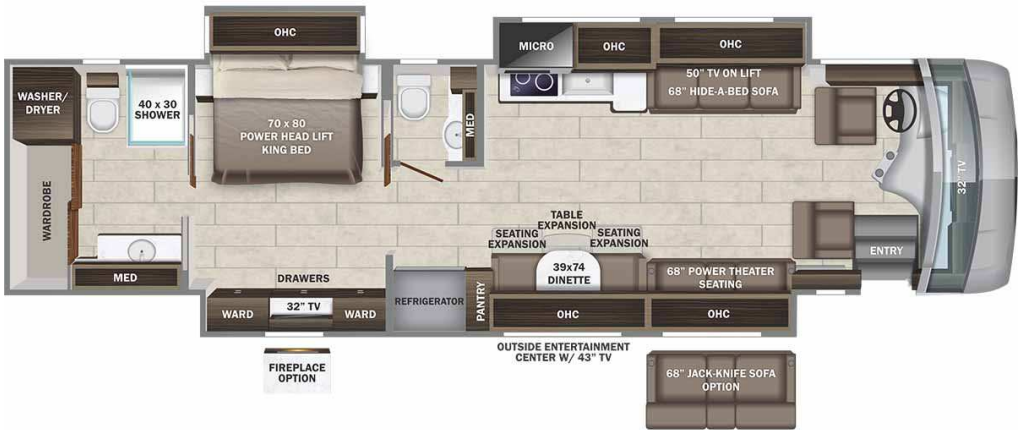
Base price 463,643.00
Summit n/c
Stonewall Gray Cabinetry 5,393.00
Exclude Linen Front
Overhead Accent Wood n/c
Blue Pearl Paint 30.00
USA Standards n/c
23 SP 36320 267" 380 ISL
2021 EMISSIONS PA05 n/c
Customer Value Package 13,500.00
No Fireplace n/c
10K Generator n/c
Winegard Trav'ler
Satellite Antenna W/DISH 113.00
Network n/c
Theater Seating Sofa n/c
No Front Overhead Bunk n/c

UNIT TOTAL 482,679.00

DEALER INSTALLED OPTIONS

Manufacturer's Suggested Retail Price \$482,679.00

TOTAL AMOUNT DOES NOT INCLUDE STATE AND LOCAL TAXES OR LICENSE FEES. THE PRICE SHOWN ABOVE MAY OR MAY NOT BE REPRESENTATIVE OF THE ACTUAL SELLING PRICE OF SIMILAR RECREATIONAL VEHICLES IN YOUR AREA.



DIMENSIONS

Exterior height:.....154.00"
Exterior width:.....101.00"

CAPACITIES

Fresh water tank (gals.):..100.00
Gray water tank (gals.):....62.00
Black water/toilet tank (gals.):.....41.00
Propane (lbs.):.....0
Propane (gals.):.....0
Water heater (gals.):.....0.00

TIRES

Tire size (front):.....275/80R 22.5
Tire size (mid):.....
Tire size (rear):.....275/80R 22.5

Some dimensions may be rounded and may vary from the acutal dimensions
***Weights may be estimated calculations and may vary from the actual weight
- refer to the vehicle weight labels for actual weights***
Floorplans, features and specifications are subject to change without notice.