



9175

Launch



ENTEGR A

COACH®

Serial #: 1USPEBBH2N1SY8137  
Model: 19Y LAUNCH MHB  
VIN#: W1W4EBVY2MT077846  
Model Year: 2022 Dealer Name: NATIONAL INDOOR RV CENTERS  
4640 NEXUS WAY  
NORTH LAS VEGAS, NV 89115

Standard Equipment

Optional Equipment

THE FOLLOWING ITEMS ARE STANDARD ON THIS MODEL  
AT NO EXTRA CHARGE

OPTIONAL EQUIPMENT INSTALLED ON THIS VEHICLE  
BY MANUFACTURER

- CUSTOMER VALUE PACKAGE**
- E-Z DRIVE™, Kom® shocks, heavy-duty rear stabilizer bar
  - Quiet, seamless patio awning with LED light strip and wind sensor
  - Double roof rack and moveable roof ladder
  - Front and rear wind deflectors with front LED light bar
  - Hydronic heating system with LED touchscreen control
  - 48V Coleman® Mac® 10 air conditioner
  - Black aluminum wheels with BFGoodrich® All-Terrain T/A® KO2® tires
- STANDARD EXTERIOR EQUIPMENT**
- Mercedes-Benz® Sprinter 2500 4x4 van with 144-in. wheelbase
  - GVWR: 9,050 lb.
  - GCWR: 13,930 lb.
  - 3.0L V6 engine with 188HP and 325 ft.-lb. torque
  - 7-speed automatic transmission
  - 220-amp alternator
  - Daytime running headlights
  - Power folding/heated side-view mirrors
  - 5,000-lb. rear hitch receiver with dual 4/7 pin connector
  - 44-gal. diesel battery
  - 24.5-gal. fuel tank (diesel)
  - 5.8-gal DEF tank
  - 48V, 210 amp hour smart lithium battery providing 10kWh hours of power
  - 3500-watt inverter
  - 2nd 48V alternator dedicated to lithium battery
  - 30-amp electrical service with detachable power cord
  - 200 watts of roof-mounted solar panels
  - Slow charge solar panel for chassis battery
  - Utility center with water controls and outside hose
  - 12V electrical drain system
  - 12V electrical pump
  - Water filtration system
  - House battery disconnect switch
  - Aqua View® SHOWERMISER™ water management system
  - Heated grey tank (12V pad) with shld plate
  - Interior-mounted fresh water tank
  - LED-ill. running boards for cab and entry doors
  - 110V exterior outlet
  - Portable solar plug
  - LED-ill. holding tank valves
  - Side screen door with magnetic and zipper close offs
  - Rear screen door with roll-up and black out capabilities
  - Fold-down exterior table
  - On-board air compressor with front and rear chucks
  - Remote keyless entry

- STANDARD INTERIOR EQUIPMENT**
- 10.25-in. MBUX infotainment center
  - Power windows and door locks
  - A/C and adaptive cruise control
  - Heavy brake assisted driver/passenger seats
  - Smartphone tray with wireless charging
  - Rain-sensing wiper system
  - Lane keeping assist
  - Blind spot assist
  - Traffic sign assist
  - Leather-wrapped tilt steering wheel with integrated controls
  - Cab area privacy shade
  - Custom-molded, vinyl-wrapped ABS interior wall panels
  - Soft-touch vinyl ceiling
  - Night-intensity LED ceiling lights
  - 16-speaker Bose® stereo system
  - Tepecorm® pull-out kitchen counter extension
  - Partry with Tecnorm® pull-out extension
  - Durable rubber flooring
  - Firefly Multiplex system
  - (2) sliding vented windows with cassette shades
  - Rear dual-pane acrylic window with cassette shades
  - MaxxAir Deluxe roof vent
  - (2) additional cab bucket seats with slide and recline features
  - BOSS® dual-zone radio with Bluetooth®
  - Collapsible dinette table
  - 3-gal. Dometic® water pot
  - Portable induction cooktop
  - Stainless-steel sink
  - 110V/USB outlets throughout
  - Drop-down overhead bed with 750-lb. capacity
  - Fiberglass side pods create larger sleeping surface
  - Rear garage under bed with L-track mounts for securing cargo
  - (2) recessed under-bed storage bags
  - RAM® Toilet-Trac™ mounts throughout
  - All-in-one wet bath with shower and cassette toilet
  - Removable bamboo shelves in wet bath
  - Retractable clothes line in shower
  - Seatbelts in all seating locations
  - Driver and passenger airbags
  - Smoke alarm
  - Carbon monoxide detector
  - Fire extinguisher

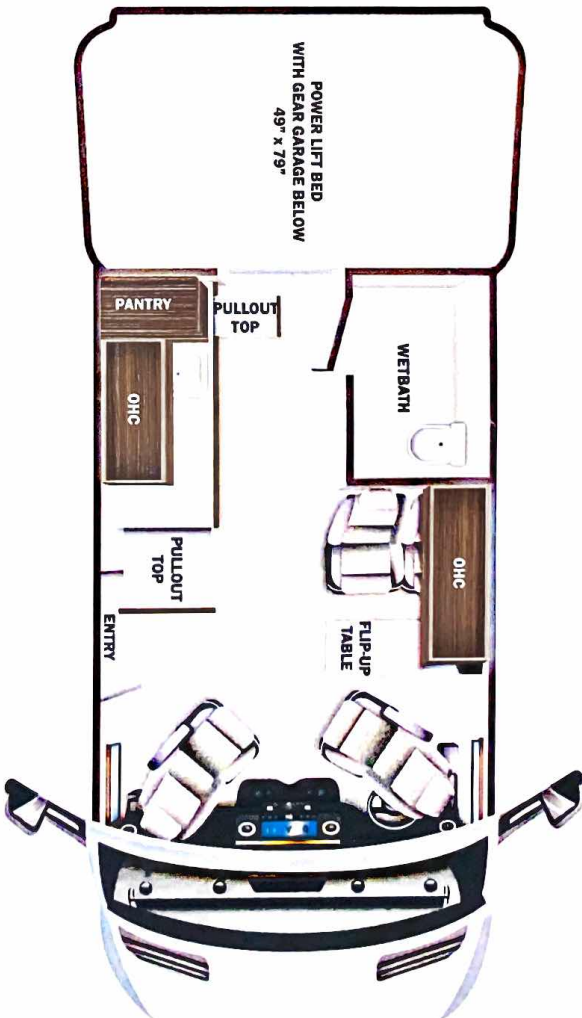
UNIT TOTAL

220,125.00

DEALER INSTALLED OPTIONS

Manufacturer's Suggested Retail Price \$220,125.00

TOTAL AMOUNT DOES NOT INCLUDE STATE AND LOCAL TAXES OR LICENSE FEES. THE PRICE SHOWN ABOVE MAY OR MAY NOT BE REPRESENTATIVE OF THE ACTUAL SELLING PRICE OF SIMILAR RECREATIONAL VEHICLES IN YOUR AREA.



DIMENSIONS

Exterior height:.....121.00"  
Exterior width:.....82.00"

CAPACITIES

Fresh water tank (gals.):.....22.00  
Gray water tank (gals.):.....20.00  
Black water/toilet tank (gals.):.....4.75  
Propane (lbs.):.....0  
Propane (gals.):.....0  
Water heater (gals.):.....0.00

TIRES

Tire size (front):.....LT245/70R17 E  
Tire size (mid):.....  
Tire size (rear):.....LT245/70R17 E

\*\*\*Some dimensions may be rounded and may vary from the actual dimensions\*\*\*  
\*\*\*Weights may be estimated calculations and may vary from the actual weight - refer to the vehicle weight labels for actual weights\*\*\*  
Floorplans, features and specifications are subject to change without notice.