



ENTEGRA

COACH®

Vision XL



Serial #: 1JSMEABT1P1UG8144
Model: 34G VISION XL MHA
VIN#: 1F66F5DN3NOA11175
Model Year: 2023 Dealer Name: NATIONAL INDOOR RV CENTERS
4640 NEXUS WAY
NORTH LAS VEGAS, NV 89115
USA

Standard Equipment

THE FOLLOWING ITEMS ARE STANDARD ON THIS MODEL
AT NO EXTRA CHARGE

STANDARD EXTERIOR EQUIPMENT

- Ford® F53 chassis
- GVWR - 22,000 lb. (34B, 34G) 24,000 lb. (36A, 36C)
- GCWR - 26,000 lb. (34B, 34G), 30,000 lb. (36A, 36C)
- 7.3L V-8 350 HP engine with 468 ft.-lb. torque
- 6-speed automatic TorqShift® transmission with overdrive and tow haul mode
- 210 amp alternator
- G-rated highway tires - 235/80R22.5 (34B, 34G), 255/80R22.5 (36A, 36C)
- Front and rear disc, 4-wheel anti-lock brakes
- 5,000 lb. rear hitch receiver with dual connector and 7-pin plug
- 12V chassis battery
- 80 gal. fuel tank
- Transfer switch with reverse polarity protection
- (2) 6V AGM (220Ah) house batteries on slideout tray
- 160W solar panel with dual controller
- Heated holding tanks (12V pads)
- 30,000 BTU auto-ignition ducted furnace (N/A 36A)
- (2) 30,000 BTU auto-ignition ducted furnaces (36A)
- Electric fireplace (34B, 34G, 36C)
- 16.5 gal. propane tank (56-lb.)
- LP quick-connect hookup
- Exterior utility center
- Winterization drain system
- Black tank flush
- Outside shower
- 12V demand water pump
- Water filtration system
- TuffShell™ vacuum-bond laminated roof, floor and sidewalls
- Bead-foam insulation (R-24 max roof, R-9 max floor, R-8 max walls)
- One-piece, seamless fiberglass front cap
- One-piece, seamless, crowned fiberglass roof
- Fiberglass exterior walls with vinyl graphics
- Entrance door with industry's largest travel-view window
- Electric-powered entrance step
- Lockable pass-through storage compartments with slam latches
- Roof ladder
- Third brake light

STANDARD INTERIOR EQUIPMENT

- Power front privacy shade with manual side privacy shades
- 120 in. panoramic windshield
- 6-way power and swivel driver/passenger seats
- Soft-touch, vinyl-wrapped automotive dash
- A/C and cruise control
- Tilt steering wheel
- Auxiliary start
- Firefly Multiplex system
- 84 in. interior ceiling height with padded vinyl ceiling
- High-intensity recessed LED ceiling lights
- LED-lit hardwood fascia
- Hardwood cabinet doors and drawers
- Ball-bearing drawer guides
- Entegra-exclusive, easy-operation legless dinette table
- Prep for satellite dish
- Cable TV hookup with RG-6 coax
- Wireguard 2.0 Wi-Fi/4G antenna
- Residential refrigerator
- Furrion® all-in-one cooktop and oven
- Residential-size microwave
- Decorative kitchen backsplash
- Shower with decorative surround, glass door, skylight and light
- Recessed stainless steel bathroom sink
- Porcelain toilet with foot flush
- Powered roof vent in bathroom with wall switch
- Walk-around, king-size bed with bedspread and nightstands
- USB port and wireless charging in nightstands
- Under-bed storage (select models)
- LED HD Smart TV in bedroom
- Large wardrobes
- Bunks with industry-exclusive, 300 lb. capacity each (36A)
- Wall-mounted label holder in each bunk (36A)
- 2-point lap safety belts in all designated seating locations
- Smoke alarm
- Carbon monoxide detector

CUSTOMER VALUE PACKAGE

- E-Z DRIVE™ ELITE: Computer-balanced driveshaft, Bistein® steering stabilizer, Kon® shocks, variable-rate front and rear jounce bumpers, heavy-duty front and rear stabilizer bars, 22.5 in. Michelin® tires
- Automatic hydraulic leveling jacks
- Frameless windows
- 15,000 BTU A/C unit with heat pump and second 13,500 BTU A/C unit
- Exterior entertainment center with outside speakers and LED HD Smart TV mounted on swivel bracket
- Electric patio awning with LED lights
- Slideout cover awnings
- Onan® Marquis Gold Genset 5,500W generator with auto-gen start
- 1,200W inverter
- 50-amp electrical service
- 10 gal. gas/electric water heater
- Sony® infotainment center with Apple CarPlay® and Android Auto™
- Backup and side-view cameras
- Removable driver/passenger cockpit table
- LED-lit, solid-surface kitchen countertops with recessed stainless steel sink and sink covers
- LED HD Smart TV in living area
- Day/night roller shades in living area

Optional Equipment

OPTIONAL EQUIPMENT INSTALLED ON THIS VEHICLE
BY MANUFACTURER

Base price	201,383.00
Modern Farmhouse	443.00
Pewter Graphics	n/c
USA Standards	n/c
Customer Value Package	11,250.00
Residential Refrigerator	n/c
No Washer/Dryer	n/c
Fiberglass Rear Cap	n/c
Front Overhead Bunk	2,993.00

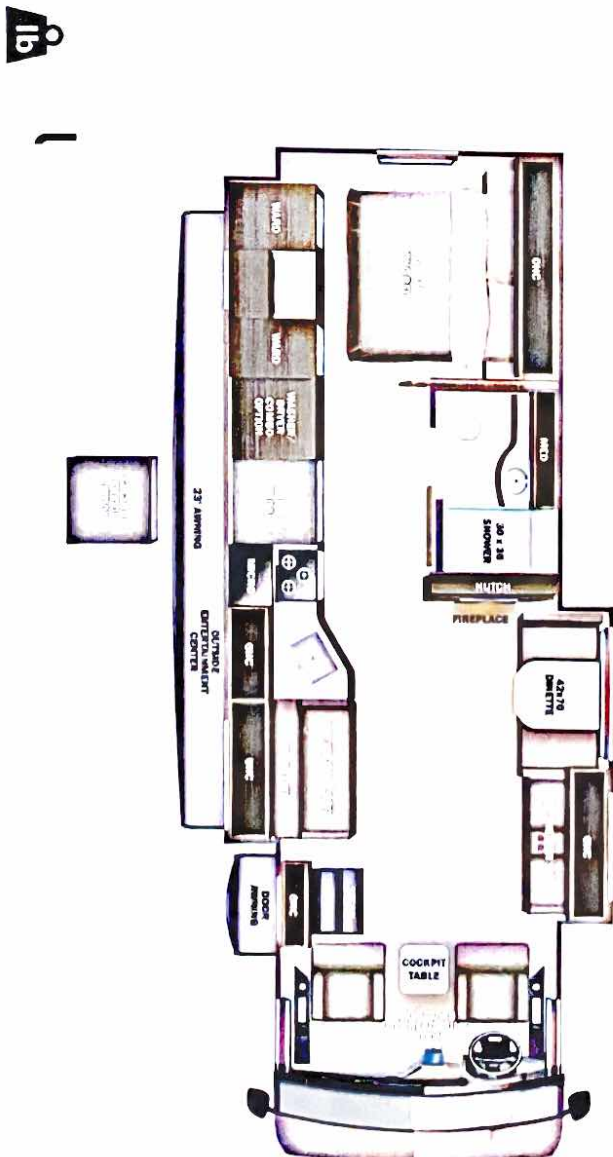
UNIT TOTAL

216,069.00

DEALER INSTALLED OPTIONS

Manufacturer's Suggested Retail Price \$216,069.00

TOTAL AMOUNT DOES NOT INCLUDE STATE AND LOCAL TAXES OR LICENSE FEES. THE PRICE SHOWN ABOVE MAY OR MAY NOT BE REPRESENTATIVE OF THE ACTUAL SELLING PRICE OF SIMILAR RECREATIONAL VEHICLES IN YOUR AREA.



DIMENSIONS

Exterior height:.....154.00"
Exterior width:.....101.00"

CAPACITIES

Fresh water tank (gals.):...72.00
Gray water tank (gals.):...40.00
Black water/coilet tank (gals):.....50.00
Propane (lbs.):.....56
Propane (gals.):.....13
Water heater (gals.):.....0.00

TIRES

Tire size (front):.....235/80R22.5G
Tire size (mid):.....
Tire size (rear):.....235/80R22.5G

Some dimensions may be rounded and may vary from the actual dimensions
***Weights may be estimated calculations and may vary from the actual weight
- refer to the vehicle weight labels for actual weights***
Floorplans, features and specifications are subject to change without notice.