



## Greyhawk Prestige



Serial #: 1UJLJCBER2N1BV4107  
Model: 29MVP GREYHAWK PRESTIGE MHC  
VIN#: 1FDXE4FN5NDC31854  
Model Year: 2022 Dealer Name: NATIONAL INDOOR RV CENTERS  
11280 N SOLAR CANYON WAY  
SURPRISE, AZ 85379  
USA

1932

### Standard Equipment

THE FOLLOWING ITEMS ARE STANDARD ON THIS MODEL  
AT NO EXTRA CHARGE

- EXTERIOR
  - Ford® E-450 chassis
  - GVWR- 14,500 lb.
  - GCWR- 22,000 lb.
  - 7.3L V-8 350 HP engine with 468 ft.-lb. torque
  - 6-speed TorqShift® series transmission with overdrive
  - 210-amp alternator
  - E-rated highway tires- LT225/75R16
  - Tire pressure monitoring system (TPMS)
  - Power anti-lock brake with power steering
  - 7,500 lb. hitch with 750 lb. tongue capacity and 7-pin plug
  - 12V chassis battery
  - 55 gal. fuel tank
  - Chrome, heated, remote-controlled, side-view mirrors
  - Stronghold® VBL™ roof, floor and sidewalls
  - Bead-foam insulation (R-24 max roof, R-9 max floor, R-5 max walls)
  - One-piece, seamless, crowned fiberglass roof
  - Fiberglass running boards and transition wings
  - Fiberglass exterior walls with partial paint
  - Remote keyless cab entry
  - Entrance door with industry's largest travel-view window
  - Electric-powered entrance step with integrated house battery compartment
  - 12V house battery
  - 190W solar panel with dual controller and second house battery
  - Slideout awning covers
  - Lockable storage compartments with slam latches
  - Heated holding tanks (12V pads)
  - 16.5 gal. propane tank (56 lb.)
  - LP quick-connect hookup
  - Exterior utility center
  - Winterization drain system
  - Black tank flush
  - Outside shower
  - 12V demand water pump
  - Onan® 4,000-watt MicroQuiet™ generator with auto-changover
  - Transfer switch with reverse polarity protection
  - 30-amp electrical service
  - Flush-mount LED marker lights
  - Third brake light
  - 4 in. bumper-tube with sewer hose storage

- CUSTOMER VALUE PACKAGE
  - JRI® PLUS: Computer-balanced drive shaft, Kom® FSD shocks, heavy-duty rear stabilizer bar, standard front stabilizer bar, Hellwig® helper springs, rubber isolation mounts
  - One-piece, seamless, fiberglass front cap
  - Automotive-bonded, panoramic window in front cap with power shade
  - Automatic hydraulic leveling jacks
  - Frameless windows
  - Exterior LED TV with high-output, marine grade exterior speakers
  - Electric patio awning with LED lights
  - 1,000-watt inverter
  - Sony® infotainment center with Apple® CarPlay™ and Android Auto™
  - Backup and side-view cameras
  - LED HD Smart Fire TV in living area
  - LED-ill, solid-surface kitchen countertops
  - LED TV in bedroom

- INTERIOR
  - Swivel driver and passenger seats (N/A 30X)
  - Driver and passenger airbags
  - Power windows and door locks
  - Tilt steering wheel
  - A/C and cruise control
  - Auxiliary start switch
  - Privacy curtains for cab area
  - Custom-molded ABS surround in cab-over area
  - Overhead bunk with 750 lb. capacity and safety net
  - 84 in. interior ceiling height with padded vinyl ceiling
  - High-intensity, recessed LED ceiling lights
  - LED-ill hardwood fascia
  - Hardwood cabinet doors and drawers
  - Ball-bearing drawer guides
  - Jayco-exclusive, easy-operation legless dinette table
  - 2-point lap safety belts in all designated seating locations
  - Interior command center
  - Blackout night roller shades
  - 15,000 BTU A/C with heat pump
  - 31,000 BTU auto-ignition furnace
  - Girard® tankless water heater
  - Prep for satellite dish
  - Winegard 2.0 Wi-Fi antenna
  - 8 cu. ft., flush-mount, double door refrigerator
  - Furrion® all-in-one cooktop and oven
  - Residential-size microwave
  - Integrated stainless-steel kitchen sink with solid-surface covers
  - Flip-up countertop extension (select models)
  - Decorative kitchen backsplash
  - Pop-up charging station in kitchen with 110 outlets and USB ports
  - Water filtration system
  - Shower with decorative surround, glass door, skylight and light
  - Stainless steel bathroom sink
  - Porcelain toilet with foot flush
  - Powered roof vent in bathroom with wall switch
  - Walk-around Queen-size bed with bedspread and nightstands
  - Powered roof vent in bedroom with wall switch
  - Under-bed storage (select models)
  - Large wardrobes
  - Bunks with industry-exclusive 300 lb. capacity each (31FP)
  - Smoke alarm
  - Carbon monoxide detector

### Optional Equipment

OPTIONAL EQUIPMENT INSTALLED ON THIS VEHICLE  
BY MANUFACTURER

Base price	153,743.00
Norway	n/c
Mystic Paint Package	8,243.00
USA Standards	n/c
22 FD E45 14500 158"	
7.3L WHITE NC10	
Customer Value Package	n/c
Dual Acs	9,000.00
12 Cu. Ft. Refrigerator	1,193.00
Aluminum Rims	2,843.00
Standard House Battery	2,393.00
Theater Seating Sofa	n/c
	375.00

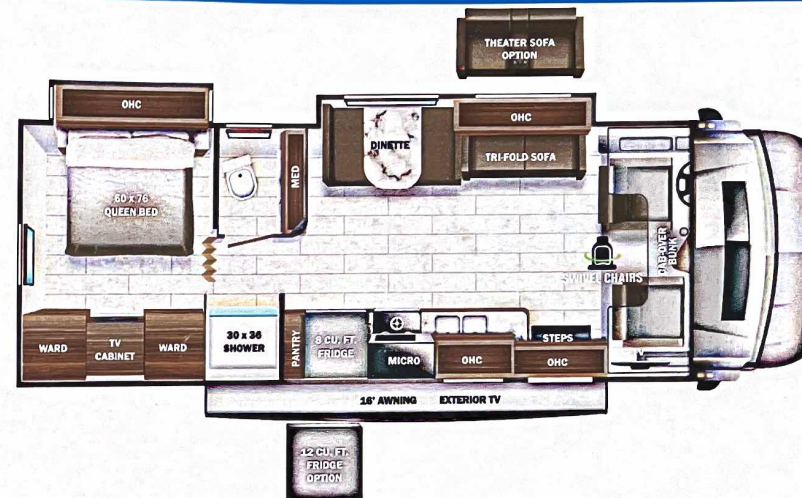
UNIT TOTAL

177,790.00

DEALER INSTALLED OPTIONS

Manufacturer's Suggested Retail Price \$177,790.00

TOTAL AMOUNT DOES NOT INCLUDE STATE AND LOCAL TAXES OR LICENSE FEES. THE PRICE SHOWN ABOVE MAY OR MAY NOT BE REPRESENTATIVE OF THE ACTUAL SELLING PRICE OF SIMILAR RECREATIONAL VEHICLES IN YOUR AREA.



### DIMENSIONS

Exterior height:.....140.00"

Exterior width:.....100.00"

### CAPACITIES

Fresh water tank (gals.):...47.00

Gray water tank (gals.):...41.00

Black water/toilet tank (gals.):...32.00

Propane (lbs.):.....56

Propane (gals.):.....13

Water heater (gals.):.....0.00

### TIRES

Tire size (front):.....LT225/75R16E

Tire size (mid):.....

Tire size (rear):.....LT225/75R16E

\*\*\*Some dimensions may be rounded and may vary from the actual dimensions\*\*\*

\*\*\*Weights may be estimated calculations and may vary from the actual weight

- refer to the vehicle weight labels for actual weights\*\*\*

Floorplans, features and specifications are subject to change without notice.

**2+3**  
YEAR | YEAR  
LIMITED | STRUCTURAL  
WARRANTY