



Greyhawk Prestige



Serial #: 1UJLJCBR0N1BV4106
Model: 29MVP GREYHAWK PRESTIGE MHC
VIN#: 1FDXE4FN1NDC31852
Model Year: 2022 Dealer Name: NATIONAL INDOOR RV CENTERS
11280 N SOLAR CANYON WAY
SURPRISE, AZ 85379
USA

7858

Standard Equipment

THE FOLLOWING ITEMS ARE STANDARD ON THIS MODEL
AT NO EXTRA CHARGE

- EXTERIOR
 - Ford® E-450 chassis
 - GVWR- 14,500 lb.
 - GCWR- 22,000 lb.
 - 7.3L V-8 350 HP engine with 468 ft.-lb. torque
 - 6-speed TorqShift® series transmission with overdrive
 - 210-amp alternator
 - E-rated highway tires- LT225/75R16
 - Tire pressure monitoring system (TPMS)
 - Power anti-lock brakes with power steering
 - 7,500 lb. hitch with 750 lb. tongue capacity and 7-pin plug
 - 12V chassis battery
 - 55 gal. fuel tank
 - Chrome, heated, remote-controlled, side-view mirrors
 - Stronghold® VBL™ roof, floor and sidewalls
 - Bead-foam insulation (R-24 max roof, R-9 max floor, R-5 max walls)
 - One-piece, seamless, crowned fiberglass roof
 - Fiberglass running boards and transition wings
 - Fiberglass exterior walls with partial paint
 - Remote keyless cab entry
 - Entrance door with industry's largest travel-view window
 - Electric-powered entrance step with integrated house battery compartment
 - 12V house battery
 - 100W solar panel with dual controller and second house battery
 - Slideout awning covers
 - Lockable storage compartments with slam latches
 - Heated holding tanks (12V pads)
 - 16.5 gal. propane tank (56 lb.)
 - LP quick-connect hookup
 - Exterior utility center
 - Winterization drain system
 - Black tank flush
 - Outside shower
 - 12V demand water pump
 - Onan® 4,000-watt MicroQuiet™ generator with auto-changover
 - Transfer switch with reverse polarity protection
 - 30-amp electrical service
 - Flush-mount LED marker lights
 - Third brake light
 - 4 in. bumper-tube with sewer hose storage

- CUSTOMER VALUE PACKAGE
 - JRD® PLUS: Computer-balanced drive shaft, Kon® FSD shocks, heavy-duty rear stabilizer bar, standard front stabilizer bar, Hellwig® helper springs, rubber isolation mounts
 - One-piece, seamless, fiberglass front cap
 - Automotive-bonded, panoramic window in front cap with power shade
 - Automatic hydraulic leveling jacks
 - Frameless windows
 - Exterior LED TV with high-output, marine grade exterior speakers
 - Electric patio awning with LED lights
 - 1,000-watt inverter
 - Sony® infotainment center with Apple® CarPlay™ and Android Auto™
 - Backup and side-view cameras
 - LED HD Smart Fire TV in living area
 - LED-lit, solid-surface kitchen countertops
 - LED TV in bedroom

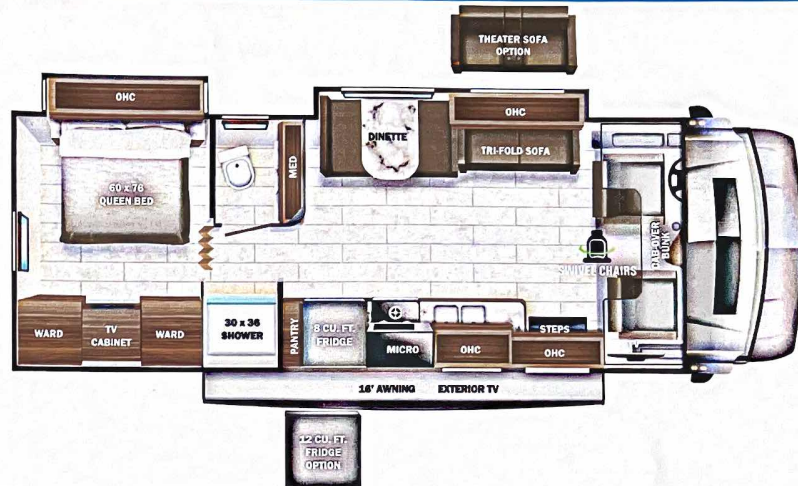
Optional Equipment

OPTIONAL EQUIPMENT INSTALLED ON THIS VEHICLE
BY MANUFACTURER

Base price	153,743.00
Norway	n/c
Mystic Paint Package	8,243.00
USA Standards	n/c
22 FD E45 14500 158"	n/c
7.3L WHITE NC10	n/c
Customer Value Package	9,000.00
Dual ACs	1,193.00
12 Cu. Ft. Refrigerator	2,843.00
Steel Rims	n/c
Standard House Battery	n/c
Theater Seating Sofa	375.00

Manufacturer's Suggested Retail Price \$175,397.00

TOTAL AMOUNT DOES NOT INCLUDE STATE AND LOCAL TAXES OR LICENSE FEES. THE PRICE SHOWN ABOVE MAY OR MAY NOT BE REPRESENTATIVE OF THE ACTUAL SELLING PRICE OF SIMILAR RECREATIONAL VEHICLES IN YOUR AREA.



DIMENSIONS

Exterior height:.....140.00"
Exterior width:.....100.00"

CAPACITIES

Fresh water tank (gals.):...47.00
Gray water tank (gals.):...41.00
Black water/toilet tank (gals.):...32.00
Propane (lbs.):...56
Propane (gals.):...13
Water heater (gals.):...0.00

TIRES

Tire size (front):.....LT225/75R16E
Tire size (mid):.....
Tire size (rear):.....LT225/75R16E

UNIT TOTAL

175,397.00

DEALER INSTALLED OPTIONS

Some dimensions may be rounded and may vary from the actual dimensions

***Weights may be estimated calculations and may vary from the actual weight

- refer to the vehicle weight labels for actual weights***

Floorplans, features and specifications are subject to change without notice.

2+3
YEAR | YEAR
LIMITED | STRUCTURAL
WARRANTY