



ENTEGRA
COACH®

Cornerstone



Serial #: 1JSMEACV1N16B8069
Model: 45B CORNERSTONE MHA
VIN#: 4VZVU1E97NC090856
Model Year: 2022 Dealer Name: NATIONAL INDOOR RV CENTERS
11280 N SOLAR CANYON WAY
SURPRISE, AZ 85379
USA

Standard Equipment

THE FOLLOWING ITEMS ARE STANDARD ON THIS MODEL AT NO EXTRA CHARGE

- EXTERIOR**
- Sparan® K3 raised-rail chassis
 - Cummins® 15-liter X15 turbocharged 605 HP engine with 1,950-lb. ft. torque at 1,150 RPM
 - Allison® 4,000 MH 6-speed transmission
 - Side-mounted, parallel-airflow radiator
 - Collision avoidance system with collision warning, adaptive cruise control and electronic stability control
 - Reyco® Granning® front axle with independent front suspension - 20,000 lb. rating
 - Dana® rear axle - 20,000 lb. rating
 - Reyco® Granning® passive-steer tag axle with air dump - 14,000 lb. rating
 - Bilstein® shocks- 60mm front axle & 46mm rear/tag axles
 - Equalizer™ hydraulic automatic coach leveling
 - Valid Truline air leveling system with auxiliary air compressor
 - Roof: 4" arched aluminum trusses filled with batt insulation and reflective Flexfoi® topped with 3/8" plywood decking then one-piece fiberglass
 - Sidewalls: 2-1/2" exterior walls with Alumina-Tu™ welded tubular aluminum studs on 16" centers or less, filled with batt and Flexfoi® insulation, then covered with high-gloss gelcoat fiberglass (R-16)
 - Floors: 2" x 4" wood trusses on 16" centers or less filled with batt and Flexfoi® insulation then topped with 3/4" 7-ply plywood decking (R-33)
 - X-Bridge™ bracing welded into chassis frame
 - Aqua-Hot® heated basement storage
 - Onan 12,500-watt diesel generator, with automatic start, on powered slide-out tray
 - 3,000-watt pure sine wave inverter
 - (4) L16 AGM batteries (6V/390 amp hrs. ea.)
 - Smart automatic transfer switch with surge protection
 - (3) 15,000-BTU A/C units with heat pumps and condensation drain system
 - Aqua-Hot® 450D hydronic water and heating system with in-floor heat throughout and engine preheat
 - Sani-Con® macerator holding tank dump system with power gate valves, manual backup and metal door
 - Trutank™ ultrasonic tank monitoring system displayed on VegaTouch screen
 - Executive Bus Armor 10" stainless-steel trim
 - Power rear engine door with magnetic override
 - Dual roof-mounted Girard® Vision dual-pitched patio awnings with LED lights
 - Girard® power entrance door awning with LED lights
 - Girard® Ultra slideout awnings
 - Girard® Ultra power window awnings
 - Frameless, dual-pane, tinted, safety-glass windows
 - Lift grab handle with doorbell and keypad system for keyless entry
 - 43" Samsung® QLED 4K UHD Smart TV with tilt, swivel, and extend adjustment
 - JBL radio and speakers with USB port and receptacle
 - Chrome, heated, remote-control, side-view mirrors with integrated cameras and blind-spot indicators
 - Diamond Shield™ front protective film mask
 - Winegard® TRAVLER satellite dish DIRECTV® - standard with USA option
 - Winegard® Rayzar Automatic powered TV antenna
 - Winegard® WiFi center with 4G/LTE
 - Heated exterior utility center with 5" LED Firefly® tank monitoring panel
 - (2) Power slideout basement storage trays
 - 2.8-cu. ft. exterior Dometic® refrigerator/freezer on slideout tray

- INTERIOR**
- Valid 15" digital dash with quad core graphics processor, on-board diagnostics, select knob and ability to display traditional instrument cluster, 360° camera system or GPS navigation
 - Blind spot monitoring system displayed on digital dash screen
 - Xite™ 360° HD digital camera system
 - Xite™ XSG4 infotainment system with dual 9" touchscreens, iGO navigation, Bluetooth®, Sirius XM™ and AM/FM tuner, integrated camera control, house mode whole-coach audio distribution and integrated VegaTouch coach control
 - Tire pressure monitoring system (TPMS) with temperature monitoring
 - E-Z Steer™ adjustable power steering assist
 - Steering wheel with integrated controls for cruise, wipers, radio and Bluetooth® phone functionality
 - Power tilt and telescoping steering column
 - JBL premium audio 11-speaker sound system with amplifier, speakers and DVC subwoofer
 - Ultra-Vision® one-piece wrap-around tinted windshield
 - 32" Samsung® QLED 4K UHD Smart TV in front overhead
 - Villio® heated and cooled leather driver and passenger seats with power 6-way adjustment, lumbar, recline, footrest and massage functions
 - Powered driver's window
 - Powered flush stepwell cover
 - Powered adjustable brake and accelerator pedals
 - Powered front sun visors and privacy shades
 - (2) dual USB ports and (2) 12V sockets for charging
 - LED-lit fireplace with 5,000-BTU heating element (45B, 45Z)
 - Firefly multiplex system with 10" VegaTouch touchscreen for complete integration of coach controls, with remote monitoring and control (mobile app available)
 - 50" Samsung® QLED 4K UHD Smart TV
 - Bose® sound bar with subwoofer and universal remote control
 - Sony® Blu-ray™ player
 - Premium leather Villio® furniture
 - Hand-laid porcelain tiled floors
 - LED interior lighting
 - Powered solar day and blackout night shades
 - Central vacuum system
 - Aire-Secure™ travel locks for all pocket doors
 - Whirlpool® stainless-steel residential refrigerator with ice maker and water dispenser
 - Induction cooktop with matching wood cover
 - Whirlpool® 1.9-cu. ft. convection microwave oven
 - Fisher & Paykel dishwasher
 - Solid-surface countertops with Blanco single-bowl granite sink and dimmable LED accent lighting
 - Maxxair® power vent exhaust fan with intake and touch screen control
 - Large, deep drawer for waste basket with easy access trash chute (trash chute not available in 45F, 45R)
 - Select Comfort® Sleep Number® King-size mattress
 - 32" Samsung® QLED 4K UHD Smart TV
 - Bose® sound bar with universal remote control
 - Sony® Blu-ray™ player
 - Ceiling fan
 - Nightstands with solid-surface tops
 - Large cedar-lined wardrobe
 - Solid-surface countertops with integrated glass sink and dimmable LED accent lighting
 - Porcelain tile shower walls and floor with skylight and frameless glass shower door
 - Teakwood shower seat (N/A 45F)
 - Pivoting shower head and separate hand-held spray wand
 - Aqua View SHOWERSER™ water saving system
 - Thetford® macerator toilet in main bath (N/A 45Z)
 - Whirlpool® stacked washer and dryer
 - Storage safe

Optional Equipment

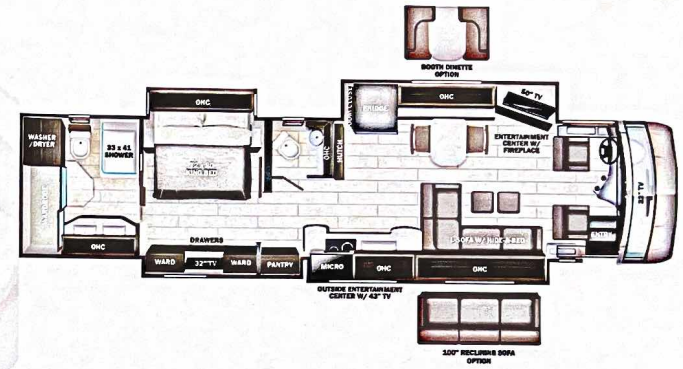
OPTIONAL EQUIPMENT INSTALLED ON THIS VEHICLE BY MANUFACTURER

Base price	804,480.00
Linen	n/c
Stonewall Gray Cabinetry	4,493.00
Exclude Linen Front	
Overhead Accent Wood	n/c
Sculpture Venato Tile	n/c
Red Horizon Paint	30.00
USA Standards	n/c
22 SP 54000 320° 605 TAG	
AXLE 2021 EMISSIONS NA09	n/c
Dishwasher Drawer	n/c
Fireplace	n/c
Trav'ler Direct TV	
Satellite Dish	n/c
Dual Solar Panels	2,775.00
Free Standing Table with 4 Chairs	n/c
Reclining Power Sofa 100"	743.00

UNIT TOTAL **812,551.00**
DEALER INSTALLED OPTIONS
Patriot Blue Paint 30.00

Manufacturer's Suggested Retail Price \$812,551.00

TOTAL AMOUNT DOES NOT INCLUDE STATE AND LOCAL TAXES OR LICENSE FEES. THE PRICE SHOWN ABOVE MAY OR MAY NOT BE REPRESENTATIVE OF THE ACTUAL SELLING PRICE OF SIMILAR RECREATIONAL VEHICLES IN YOUR AREA.



DIMENSIONS

Exterior height.....	152.00"
Exterior width.....	101.00"
Tire size (front).....	365/70R22.5
Tire size (mid).....	315/80R22.5
Tire size (rear).....	315/80R22.5

CAPACITIES

Fresh water tank (gals.).....	100.00
Gray water tank (gals.).....	62.00
Black water/toilet tank (gals.).....	41.00
Propane (lbs.).....	0
Propane (gals.).....	0.00
Water heater (gals.).....	0.00

TIRES

Some dimensions may be rounded and may vary from the actual dimensions
Weights may be estimated calculations and may vary from the actual weight - refer to the vehicle weight labels for actual weights
Floorplans, features and specifications are subject to change without notice.