



# ENTEGRA

COACH®

## Aspire

Serial #: 1JSMACV9N13R8085

Model: 44R ASPIRE MHA

VIN#: 4VZAU1D94NC091785

Model Year: 2022 Dealer Name: NATIONAL INDOOR RV CENTERS



4640 NEXUS WAY  
NORTH LAS VEGAS, NV 89115

### Standard Equipment

THE FOLLOWING ITEMS ARE STANDARD ON THIS MODEL  
AT NO EXTRA CHARGE

#### EXTERIOR

- Spartan® K2 raised-rail chassis
- Cummins® L9 turbocharged 450 HP engine with 1,250-lb. ft. torque at 1,400 RPM
- Allison® 3,000 MH 6-speed transmission
- Side-mounted, parallel-airflow radiator
- Rayco® Granning® front axle with independent front suspension - 17,000 lb. rating
- Meritor rear axle - 20,000 lb. rating (Dana® rear axle - 24,000 lb. rating on 40P)
- Tag axle with air dump - 12,000 lb. rating (N/A 40P)
- Bistein® 46mm shocks
- Equalizer™ hydraulic automatic coach leveling
- Roof: 4" arched aluminum fusses filled with batt insulation and reflective Flexfoi® topped with 3/8" plywood decking then one-piece fiberglass
- Sidewalls: 2-1/2" exterior walls with Alumna-Tu™ welded tubular aluminum studs on 16" centers or less, filled with batt and Flexfoi® insulation, then covered with high-gloss gelcoat fiberglass (R-16)
- Floors: 2" x 4" wood fusses on 16" centers or less filled with batt and Flexfoi® insulation then topped with 3/4" 7-ply plywood decking (R-33)
- X-Bridge™ bracing welded into chassis frame
- Aqua-Hot® heated basement storage
- Insulated front and rear caps (R-24)
- Entegra-exclusive Relia-Torque flush-mounted 12V slideout system
- Onan® 10,000-watt diesel generator, with automatic start, on slide-out tray
- 3,000-watt pure sine wave inverter
- (2) L16 AGM batteries (6V/390 amp hrs. ea.)
- 50-amp power cord on electric powered reel
- Smart automatic transfer switch with surge protection
- (3) 15,000-BTU A/C units with heat pumps and condensation drain system
- Aqua-Hot® 400D hydronic water and heating system with in-floor heat throughout
- Sani-Con® Macerator holding tank dump system with manual gate valves, manual backup and metal door
- Black holding tank sprayer
- City and tank water filtration system
- Winterizing drain system
- TruLink™ ultrasonic tank monitoring system displayed on Vega Touch screen
- Water hose with electric reel
- Power rear engine door with manual override
- Dual roof-mounted Girard® Vision dual-pitched patio awnings with LED lights
- Girard® power entrance door awning with LED lights
- Girard® Ultra slideout awnings
- Girard® window awnings
- Frameless, dual-pane, tinted, safety-glass windows
- Lift grab handle with doorbell and keypad system for keyless entry
- 43" Samsung® 4K UHD Smart TV with tilt, swivel, and extend adjustment
- JBL radio and speakers with USB port and reeplace
- Chrome, heated, remote-control, side-view mirrors with integrated cameras
- Diamond Shield™ front protective film mask
- LED accent lights under passenger slideout rooms
- Winegard® TRAVLER satellite dish DIRECTV® - standard with USA option
- Winegard® Rayzar Z1 TV antenna
- Winegard® WiFi extender with 4GLTE
- Heated exterior utility center with 5 LED Firefly® tank monitoring panel
- Slideout basement storage tray

#### INTERIOR

- Valid 12.3" digital dash with quad core graphics processor, on-board diagnostics, selector knob and ability to display traditional instrument cluster, 360° camera system or GPS navigation
- Xite™ 360° HD digital camera system
- Xite™ XSG4 infotainment system with 9" touchscreen, iGO navigation, Bluetooth®, Sirius XM™ and AM/FM tuner, integrated camera control and house mode whole-coach audio distribution
- Tire pressure monitoring system (TPMS) with temperature monitoring
- E-Z Steer™ adjustable power steering assist
- Steering wheel with integrated controls for cruise, wipers, radio and Bluetooth® phone functionality
- Manual tilt and telescoping steering column
- JBL® premium audio 5-speaker sound system with amplifier, speakers and DVC subwoofer
- Ultra-Vision® one-piece wrap-around tinted windshield
- 32" Samsung® LED 1080P Smart TV in front overhead
- Villa® leather driver and passenger seats with powered 6-way adjustment, lumbar and footrest functions
- Powered flush stepwell cover
- Powered adjustable brake and accelerator pedals
- Powered front sun visors and privacy shades
- (2) dual USB ports and (2) 12V sockets for charging
- Firefly multiplex system with 10" Vega Touch touchscreen for complete integration of coach controls (mobile app available)
- 50" Samsung® 4K UHD Smart TV
- Bose® sound bar with subwoofer and universal remote control
- Sony® Blu-ray™ player
- Premium leather Villa® furniture
- Hand-laid porcelain tiled floors
- LED interior lighting
- Manual solar day shades and blackout night shades
- Central vacuum system
- Aire-Secure™ travel locks for all pocket doors
- Removable screen on entry door
- Bar area with beverage chiller and rain glass upper cabinet door with LED accent lighting (44R only)
- Window with slider and screen
- Whirlpool® stainless-steel residential refrigerator with ice maker and water dispenser
- Induction cooktop with matching wood cover
- Whirlpool® 1.9-cu. ft. convection microwave oven
- Fisher & Paykel dishwasher
- Solid-surface countertops with stainless steel sink and dimmable LED accent lighting
- Maxxair® power vent exhaust fan with intake and touch screen control
- Large, deep drawer for waste basket with easy access trash chute (trash chute not available on 40P, 44F and 44R)
- King-size gel memory-foam mattress
- 32" Samsung® LED 1080P Smart TV
- Bose® sound bar with universal remote control
- Sony® Blu-ray™ player
- Ceiling fan
- Nightstands with solid-surface tops
- Solid-surface countertops with integrated sink and dimmable LED accent lighting
- Textured porcelain tile shower with skylight and clear glass shower door
- Teakwood shower seat (N/A 44F)
- Fixed shower head and separate hand-held spray wand
- Aqua View SHOWERMISER™ water saving system
- Theford® macerator toilet in main bath (N/A 44Z)
- Theford® Aqua-Magic toilet with foot flush in mid bath (44B, 40P)
- Maxxair® power exhaust fan with intake
- Heated exterior utility center with 5 LED Firefly® tank monitoring panel
- Storage sale

### Optional Equipment

OPTIONAL EQUIPMENT INSTALLED ON THIS VEHICLE  
BY MANUFACTURER

Base price	567,480.00
Shadow	n/c
Almond Cabinetry	30.00
Exclude Linen Front	
Overhead Accent Wood	
Ultrasonic Blue Paint	n/c
USA Standards	30.00
22 SP 49000 320" 450 TAG	n/c
AXLE 2021 EMISSIONS NA07	n/c
Dishwasher Drawer	n/c
10K Generator	n/c
Trav'ler Direct TV	n/c
Satellite Dish	n/c
No Solar Panels	n/c
Four Batteries	1,643.00
Theater Seating Sofa	1,125.00
Sleepnade Gel Memory	
Mattress	n/c

UNIT TOTAL

570,308.00

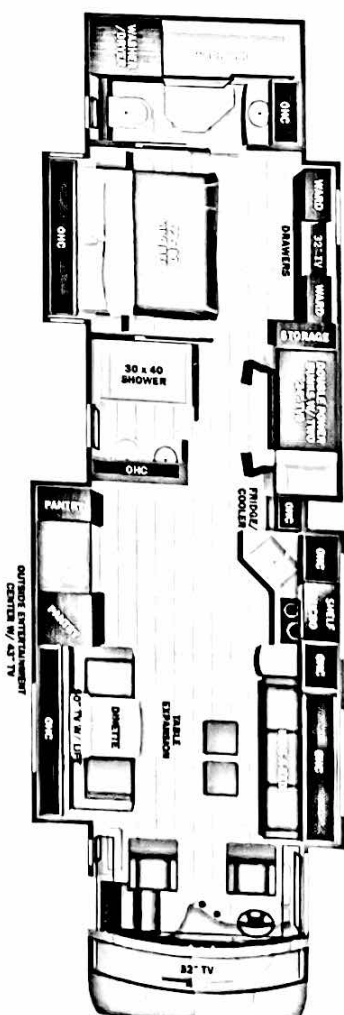
### DEALER INSTALLED OPTIONS

Manufacturer's Suggested Retail Price \$570,308.00

TOTAL AMOUNT DOES NOT INCLUDE STATE AND LOCAL TAXES OR LICENSE FEES. THE PRICE SHOWN ABOVE MAY OR MAY NOT BE REPRESENTATIVE OF THE ACTUAL SELLING PRICE OF SIMILAR RECREATIONAL VEHICLES IN YOUR AREA.



THEATER SEAT OPTION  
REPLACES TWIN POWER  
RECLINER OPTION



#### DIMENSIONS

Exterior height:.....152.00"  
Exterior width:.....101.00"

#### CAPACITIES

Fresh water tank (gals.):..100.00  
Gray water tank (gals.):...62.00  
Black water/toilet tank (gals.):.....41.00  
Propane (lbs.):.....0  
Propane (gals.):.....0  
Water heater (gals.):.....0.00

#### TIRES

Tire size (front):.....315/80R22.5  
Tire size (mid):.....295/80R22.5  
Tire size (rear):.....295/80R22.5

\*\*\*Some dimensions may be rounded and may vary from the actual dimensions\*\*\*  
\*\*\*Weights may be estimated calculations and may vary from the actual weight\*\*\*  
- refer to the vehicle weight labels for actual weights\*\*\*  
Floorplans, features and specifications are subject to change without notice.