



ENTEGRACOACH®

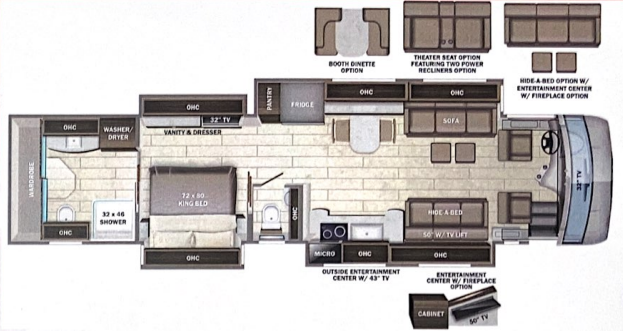
Cornerstone



Serial #: 1JSMEACV0N16W8059
 Model: 45W CORNERSTONE MHA
 VIN#: 4VZVU1E9XNC090544
 Model Year: 2022 Dealer Name: NATIONAL INDOOR RV CENTERS
 1350 HURRICANE SHOALS ROAD
 LAWRENCEVILLE, GA 30043
 USA

Manufacturer's Suggested Retail Price \$787,448.00

TOTAL AMOUNT DOES NOT INCLUDE STATE AND LOCAL TAXES OR LICENSE FEES. THE PRICE SHOWN ABOVE MAY OR MAY NOT BE REPRESENTATIVE OF THE ACTUAL SELLING PRICE OF SIMILAR RECREATIONAL VEHICLES IN YOUR AREA.



Standard Equipment

THE FOLLOWING ITEMS ARE STANDARD ON THIS MODEL AT NO EXTRA CHARGE

Optional Equipment

OPTIONAL EQUIPMENT INSTALLED ON THIS VEHICLE BY MANUFACTURER

- EXTERIOR**
- Spartan® K3 raised rail chassis
 - Cummins® 15-liter X15 turbocharged 605 HP engine with 1,900 lb. ft. torque at 1,100 RPM
 - Allison® 4,000 MH 6-speed transmission
 - Side-mounted, parallel airflow radiator
 - Collision avoidance system with collision warning, adaptive cruise control and electronic stability control
 - Repeat® Grummet® front axle with independent front suspension - 20,000 lb. rating
 - Dana® rear axle - 20,000 lb. rating
 - Repeat® Grummet® passive-steer tag axle with air dump - 14,000 lb. rating
 - Bilstein® shocks, 60mm front axle & 46mm rear tag axles
 - Equalize™ hydraulic automatic coach leveling
 - Vaid® Trainee air leveling system with auxiliary air compressor
 - Flood-4 arched aluminum trusses filled with batt insulation and reflective Flexfoam® topped with 3/8" plywood decking then one-piece fiberglass
 - Sidewalls - 2" 12" exterior walls with Alum-Tu™ welded-kuluar aluminum studs on 16" centers or less, filled with batt and Flexfoam® insulation, then covered with high-gloss gelcoat fiberglass (R-16)
 - Floors - 2" x 4" wood trusses on 16" centers or less filled with batt and Flexfoam® insulation then topped with 3/4" plywood decking (R-33)
 - X-Design™ bracing welded into chassis frame
 - Aqua Hot® heated basement storage
 - Onan® 12,500-watt diesel generator, with automatic start, on powered slide-out tray
 - 3,000-watt pure sine wave inverter
 - (4) L16 AGM batteries (6V/300 amp hrs. ea.)
 - Smart automatic transfer switch with surge protection
 - (3) 15,000 BTU A/C units with heat pumps and condensation drain system
 - Aqua Hot® 4000 hydraulic water and heating system with in-floor heat throughout and engine preheat
 - Safe-Cox® Macerator holding tank dump system with power gate valves, manual backup and metal door
 - TruSank™ ultrasonic tank monitoring system displayed on VegaTouch screen
 - Executive Bus Armor 10" stainless steel trim
 - Power rear engine door with manual override
 - Dual roof-mounted Onan® Vision dual pitched patio awnings with LED lights
 - Onan® power entrance door awning with LED lights
 - Onan® Ultra slideout awnings
 - Onan® Ultra power window awnings
 - Framesias, dual-pane, tinted, safety-glass windows
 - Lr grab handle with doorbell and keypad system for keyless entry
 - 42" Samsung® QLED 4K UHD Smart TV with tilt, swivel, and extend adjustment
 - JBL audio and speakers with USB port and receptacle
 - Chrome heated remote control, side-view mirrors with integrated cameras and blind-spot indicators
 - Diamond Shield™ front protective fire mask
 - Winegard® TRAVLER satellite dish DIRECTV® - standard with USA option
 - Winegard® Rayzar Automatic powered TV antenna
 - Winegard® WiFi extender with 4G LTE
 - Heated exterior daily center with 7" LED Freefly® tank monitoring panel
 - (2) Power slideout basement storage trays
 - 2.8-cu. ft. exterior Dometic® refrigerator/freezer on select tray

- INTERIOR**
- Valid 15" digital dash with dual core graphics processor, on-board diagnostics, selector knob and ability to display traditional instrument cluster, 360° camera system or GPS navigation
 - Blind spot monitoring system displayed on digital dash screen
 - X3M™ 360° HD digital camera system
 - X3M™ X304 entertainment system with dual 9" touchscreens, 100 navigation, Bluetooth®, Sirius XM™ and AM/FM tuner, integrated camera control, house mode whole-coach audio distribution and integrated VegaTouch coach control
 - Tire pressure monitoring system (TPMS) with temperature monitoring
 - EZ Steer™ adjustable power steering assist
 - Steering wheel with integrated controls for cruise, wipers, radio and Bluetooth® phone functionality
 - Power tilt and telescoping steering column
 - JBL® premium audio 11-speaker sound system with amplifier, speakers and DVC subwoofer
 - Ultra-Vision® one-piece wrap-around tinted windshield
 - 32" Samsung® QLED 4K UHD Smart TV in front overhead
 - Ultra® heated and cooled leather driver and passenger seats with powered 6-way adjustment, lumbar, recline, footrest and massage functions
 - Powered driver's window
 - Powered flush stepwell cover
 - Powered adjustable brake and accelerator pedals
 - Powered front fan visors and privacy shades
 - (2) dual USB ports and (2) 12V sockets for charging
 - LED in-floorside with 5,500-BTU heating element (450, 452)
 - Fully multiplex system with 10" VegaTouch touchscreen for complete integration of coach controls, with remote monitoring and control (remote app available)
 - 50" Samsung® QLED 4K UHD Smart TV
 - Bose® sound bar with subwoofer and universal remote control
 - Sony® Blu-ray™ player
 - Premium leather Villa® furniture
 - Hand-laid porcelain tiled floors
 - LED interior lighting
 - Powered solar day and blackout night shades
 - Central vacuum system
 - Aire-Secure™ travel lock for all pocket doors
 - Whirlpool® stainless-steel residential refrigerator with ice maker and water dispenser
 - Induction cooktop with matching wood cover
 - Whirlpool® 1.9-cu. ft. convection microwave oven
 - Faber & Faber® dishwasher
 - Solid surface countertops with Blanco single-bowl granite sink and dimmable LED accent lighting
 - Maxxair® power vent exhaust fan with intake and touch screen control
 - Large, deep drawer for waste basket with easy access trash chute (trash chute not available in 45F, 45R)
 - Select Comfort® Sleep Number® King-size mattress
 - 32" Samsung® QLED 4K UHD Smart TV
 - Bose® sound bar with universal remote control
 - Sony® Blu-ray™ player
 - Ceiling fan
 - Nightstand with solid surface tops
 - Large cedar-lined wardrobe
 - Solid surface countertops with integrated glass sink and dimmable LED accent lighting
 - Porcelain tile shower walls and floor with skylight and frameless glass shower door
 - Teakwood shower seat (NA 45F)
 - Folding shower stool and separate hand-held spray wand
 - Aqua View SHOWERSHOWER™ water saving system
 - Theier® macerator toilet in main bath (NA 45Z)
 - Whirlpool® stacked washer and dryer
 - Storage seat

Base price	785,730.00
Linen	n/c
Almond Cabinetry	n/c
Exclude Linen Front	n/c
Overhead Accent Wood	n/c
Swiss Rhine® Tile	n/c
Red Horizon Paint	n/c
USA Standards	n/c
22 SP 54000 320° 605 TAG	n/c
AXLE 2021 EMISSIONS NA09	n/c
Dishwasher Drawer	n/c
Winegard Trav'ler	n/c
Satellite Antenna W/DISH Network	n/c
Free Standing Table with 4 Chairs	n/c
Theater Seating Sofa	1,125.00
Fireplace with TV Entertainment	375.00
SIS Ins 21 Phoenix paint; Linen cabinets in bathroom	219.00
UNIT TOTAL	787,448.00

DEALER INSTALLED OPTIONS

DIMENSIONS

Exterior height:.....152.00"
 Exterior width:.....101.00"

TIRES

Tire size (front):.....365/70R22.5
 Tire size (mid):.....315/80R22.5
 Tire size (rear):.....315/80R22.5

CAPACITIES

Fresh water tank (gals.):.....100.00
 Gray water tank (gals.):.....62.00
 Black water/toilet tank (gals.):.....41.00
 Propane (lbs.):.....0
 Propane (gals.):.....0
 Water heater (gals.):.....0.00

Some dimensions may be rounded and may vary from the actual dimensions
 Weights may be estimated calculations and may vary from the actual weight
 - refer to the vehicle weight labels for actual weights***
 Floorplans, features and specifications are subject to change without notice.