



ENTEGRA
COACH®

Reatta



Serial #: 1JSMEABU8N1NJ8080
 Model: 39T2 REATTA MHA
 VIN#: 4VZDR1A92NC091898
 Model Year: 2022 Dealer Name: NATIONAL INDOOR RV CENTERS
 11280 N SOLAR CANYON WAY
 SURPRISE, AZ 85379
 USA

Manufacturer's Suggested Retail Price \$405,263.00

TOTAL AMOUNT DOES NOT INCLUDE STATE AND LOCAL TAXES OR LICENSE FEES. THE PRICE SHOWN ABOVE MAY OR MAY NOT BE REPRESENTATIVE OF THE ACTUAL SELLING PRICE OF SIMILAR RECREATIONAL VEHICLES IN YOUR AREA.

Standard Equipment

THE FOLLOWING ITEMS ARE STANDARD ON THIS MODEL AT NO EXTRA CHARGE

- EXTERIOR**
- Spartan® K1 raised-rail chassis
 - Cummins® B6.7 turbocharged 360-HP engine with 800-lb. ft. torque at 1,800 RPM
 - Allison® 3,300 MH 6-speed transmission
 - Rear-mounted radiator
 - 170-amp alternator
 - 750-watt engine block heater
 - Variable geometry turbo (VGT) engine brake
 - Independent front air suspension (IFS) front axle-12,600 lb. (37K) 14,320 lb. (39BH/39T2)
 - Rear axle - 20,000 lb. (37K) 22,000 lb. (39BH/39T2)
 - 4.88 rear axle ratio
 - Michele® 275/80R 22.5" tires
 - Bilstein® 46mm shocks
 - Tire pressure monitoring system (TPMS) with temperature monitoring
 - Equalizer™ hydraulic automatic coach leveling
 - Remote air connection
 - (2) 12V chassis batteries
 - 100-gal. fuel tank
 - 10-gal. DEF tank
 - Spartan® Safehaul tow vehicle air brake system
 - 10,000-lb. hitch with 7-pin plug
 - Roof: One-piece fiberglass with 3/8" plywood decking, 4" arched aluminum inusses, insulation and reflective Flexfoxt® (R-24)
 - Sidewalls: Vacuum-bonded, high-gloss gelcoat with R-8 bead-foam insulation
 - Floor: Vacuum-bonded layers of Darco underbelly, a welded aluminum frame, R-9 bead-foam insulation, 3/8" Structurwood® and 1/4" plywood
 - X-Bridge™ bracing welded into chassis frame
 - Heated basement storage
 - Electric-powered slideout rooms
 - Onan® 8,000-watt diesel generator, with automatic start, on slide-out tray
 - 2,000-watt pure sine wave inverter with 100-amp battery charger
 - (2) L16 AGM batteries (6V/390 amp hrs. ea.)
 - 50-amp power cord
 - Automatic transfer switch with surge protection
 - (3) 15,000-BTU A/C units with heat pumps [(2) 15,000-BTU units with heat pumps on 37K]
 - Tankless gas water heater
 - 24.5-gal. propane tank
 - Onan® laser-cut holding tank dump system with manual gate valves, manual backup and metal door
 - Black holding tank sprayer
 - Winterizing drain system
 - Carefree® power patio awning with LED lights
 - Carefree® power entrance door awning with LED lights
 - Carefree® slideout awnings
 - Carefree® window awnings
 - Frameless, dual-pane, tinted, safety-glass windows
 - Grab handle and keypad system for keyless entry
 - 43" Samsung® 4K UHD Smart TV with tilt, swivel, and extend adjustment
 - JBL radio and speakers with USB port and receptacle
 - Heated, remote-control, side-view mirrors with integrated cameras
 - Diamond Shield™ front protective film mask
 - Wineward® TRAVLER satellite dish DIRECTV® - standard with USA option
 - Wineward® Rayzar Z1 TV antenna
 - Wineward® WiFi extender with 4G/LTE
 - Solar power prep
 - Exterior utility center
 - Slideout basement storage tray

- INTERIOR**
- Valid 12.3" digital dash with quad core graphics processor, on-board diagnostics, selector knob and ability to display traditional instrument cluster, 360° camera system or GPS navigation
 - Xite™ 360° HD digital camera system
 - Xite™ XSG4 infotainment system with 9" touchscreen, iGO navigation, Bluetooth®, Sirius XM™ and AM/FM tuner, integrated camera control and house mode whole-coach audio distribution
 - Steering wheel with integrated controls for cruise, wipers, radio and Bluetooth® phone functionality
 - Manual tilt and telescoping steering column
 - Ultra-Vision® one-piece wrap-around tinted windshield
 - 6-way power adjustable driver and passenger seats
 - Powered flush stepwell cover
 - Powered adjustable brake and accelerator pedals
 - Powered front sun visors and privacy shades
 - (2) dual USB ports and (2) 12V sockets for charging
 - 35,000-BTU furnace (37K) / (1) 20,000 and (1) 30,000 (39BH, 39T2)
 - LED-lit fireplace with 5,000-BTU heating element (37K only)
 - Firefly multiplex system with 7" VegaTouch touchscreen for complete integration of coach controls (mobile app available)
 - 50" Samsung® 4K UHD Smart TV
 - Samsung® sound bar with subwoofer
 - Sony® Blu-ray™ player
 - Premium furniture
 - Hand-laid porcelain tiled floors
 - LED interior lighting
 - Decorative ceiling feature with integrated accent lighting
 - Manual solar day shades and blackout night shades
 - Central vacuum system
 - Removable screen on entry door
 - Window with slider and screen
 - Whirlpool® stainless-steel residential refrigerator with ice maker and water dispenser
 - Induction cooktop
 - 1.5-cu. ft. convection microwave oven
 - Solid-surface countertops with stainless steel sink
 - Fan-Tastic power exhaust fan with intake
 - King-size pillow-top mattress on lift bed
 - 32" Samsung® LED 1080P Smart TV
 - Sony® Blu-ray™ player
 - Solid-surface countertops with integrated sink
 - One-piece fiberglass shower with skylight
 - Aqua View SHOWERMISER™ water saving system
 - Theford® Aqua Magic toilet with foot flush
 - Fan-Tastic power exhaust fan with intake
 - Whirlpool® stacked washer and dryer
 - Combination carbon monoxide detector and LP gas alarm
 - Smoke alarm

Optional Equipment

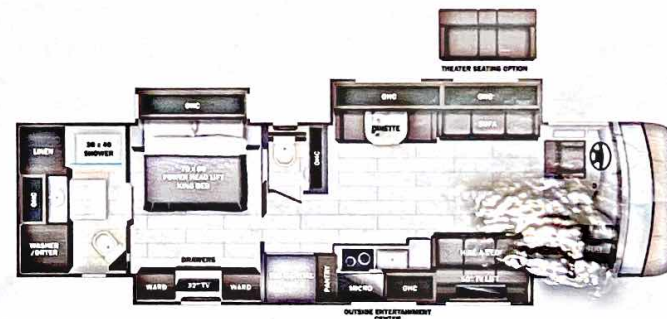
OPTIONAL EQUIPMENT INSTALLED ON THIS VEHICLE BY MANUFACTURER

Base price	388,290.00
Onyx	n/c
Stonewall Gray Cabinetry	n/c
Exclude Linen Front	4,493.00
Overhead Accent Wood	n/c
Blue Velvet Paint	30.00
USA Standards	n/c
22 SP 36320 261" 360ISB	n/c
2021 EMISSIONS NA02	n/c
Customer Value Package	11,250.00
8K Generator	n/c
Trav'ler Direct TV	n/c
Satellite Dish	n/c
Theater Seating Sofa	1,200.00

UNIT TOTAL

405,263.00

DEALER INSTALLED OPTIONS



DIMENSIONS

Exterior height:.....	154.00"
Exterior width:.....	101.00"

CAPACITIES

Fresh water tank (gals.).....	100.00
Gray water tank (gals.).....	62.00
Black water/toilet tank (gals.).....	41.00
Propane (lbs.).....	56
Propane (gals.).....	13
Water heater (gals.).....	0.00

TIRES

Tire size (front):.....	275/80R22.5
Tire size (mid):.....	
Tire size (rear):.....	275/80R22.5

Some dimensions may be rounded and may vary from the actual dimensions

***Weights may be estimated calculations and may vary from the actual weight

- refer to the vehicle weight labels for actual weights***

Floorplans, features and specifications are subject to change without notice.