



Cornerstone



Serial #: 1JSMACV9N16B8062
Model: 45B CORNERSTONE MHA
VIN#: 4VZVU1E90NC090794
Model Year: 2022 Dealer Name: National Indoor Rv Centers
1205 Bridgestone Parkway
La Vergne, TN 37088
USA

Standard Equipment

THE FOLLOWING ITEMS ARE STANDARD ON THIS MODEL
AT NO EXTRA CHARGE

EXTERIOR

- Spartan® K3 raised-rail chassis
- Cummins® 15-ltr X15 turbocharged 605 HP engine with 1,950-hp ft. torque at 1,150 RPM
- Allison® 4,000-MH 6-speed transmission
- Side-mounted, parallel-airflow radiator
- Collision avoidance system with collision warning, adaptive cruise control and electronic stability control
- Rayco® Greasyn® front axle with independent front suspension - 20,000 lb. rating
- Dineco® rear axle - 20,000 lb. rating
- Rayco® Greasyn® passive steel tag axle with air dump - 14,000 lb. rating
- Blanding® shocks - 60mm front axle & 46mm rear tag axle
- Equalizer™ hydraulic automatic coach leveling
- Valid Truline air leveling system with auxiliary air compressor
- Floor: 4" arched aluminum tusses filled with batt insulation and reflective Flexfo® topped with 3/8" plywood decking then one-piece fiberglass
- Sidelocks: 2" 12" exterior walls with Alum-Tu™ welded tubular aluminum studs on 16" centers or less, filled with batt and Flexfo® insulation, then covered with high-gloss gelcoat fiberglass (P-16)
- Floors: 2" x 4" wood tusses on 16" centers or less, filled with batt and Flexfo® insulation then topped with 3/4" 7 ply plywood decking (R-33)
- X-Straps™: extruded welded into chassis frame
- Aqua-Hot® heated basement storage
- Onan® 12,500-watt diesel generator, with automatic start, on powered side-out tray
- 3,000-watt pure sine wave inverter
- (4) L16 AGM batteries (6V/300 amp hrs. ea.)
- Smart automatic transfer switch with surge protection
- (3) 15,000-BTU A/C units with heat pumps and condensation drain system
- Aqua-Hot® 4500 hydronic water and heating system with in-floor heat throughout and engine preheat
- San-Con® Macerator holding tank dump system with power gate valves, manual backup and metal door
- TruLink™ ultrasonic tank monitoring system displayed on VegaTouch screen
- Exclusive Blue Armor 10" stainless-steel trim
- Power rear engine door with manual override
- Dual roof-mounted Grand® Vision dual-pitched patio awnings with LED lights
- Grand® power entrance door awning with LED lights
- Grand® Ultra slideout awnings
- Frameless, dual-pane, tinted, safety-glass windows
- Li grab handle with doorbell and keypad system for keyless entry
- 43" Samsung® QLED 4K UHD Smart TV with tilt, swivel, and extend adjustment
- JBL radio and speakers with USB port and receptacle
- Chrome, heated, remote-control, side-view mirrors with integrated cameras and blind-spot indicators
- Diamond Shield™ light protective film mask
- Wingard® TRAVLER satellite dish DIRECTV® - standard with USA option
- Wingard® Rayzor Automatic powered TV antenna
- Wingard® WiFi extender with 4G LTE
- Heated exterior utility center with 5' LED Firefly® tank monitoring panel
- (2) Power slideout basement storage trays
- 2.2 cu. ft. exterior Dometic® refrigerator/freezer on dead tray

INTERIOR

- Valid 15" digital dash with quad core graphics processor, on-board diagnostics, selector knob and ability to display traditional instrument cluster, 360° camera system or GPS navigation
- Blind spot monitoring system displayed on digital dash screen
- Xite™ 360° HD digital camera system
- Xite™ XSG4 infotainment system with dual 9" touchscreens, 100 navigation, Bluetooth, Sirius XM™ and AM/FM tuner, integrated camera control, house mode whole-coach audio distribution and integrated VegaTouch coach control
- Tire pressure monitoring system (TPMS) with temperature monitoring
- E-Z Steer™ adjustable power steering assist
- Steering wheel with integrated controls for cruise, wipers, radio and Bluetooth® phone functionality
- Power tilt and telescoping steering column
- JBL® premium audio 11-speaker sound system with amplifier, speakers and DVD subwoofer
- Ultra-Vision® one-piece wrap-around tinted windshield
- 32" Samsung® QLED 4K UHD Smart TV in front overhead
- Villa® heated and cooled leather driver and passenger seats with powered 6-way adjustment, lumbar, recline, footrest and massage functions
- Powered driver's window
- Powered flush stepwell cover
- Powered adjustable brake and accelerator pedals
- Powered front sun visors and privacy shades
- (2) dual USB ports and (2) 12V sockets for charging
- LED-Hi fireplace with 5,000-BTU heating element (458, 452)
- Fully multiplex system with 10" VegaTouch touchscreen for complete integration of coach controls, with remote monitoring and control (mobile app available)
- 50" Samsung® QLED 4K UHD Smart TV
- Bose® sound bar with subwoofer and universal remote control
- Sony® Blu-ray™ player
- Premium leather Villa® furniture
- Hand-laid porcelain tiled floors
- LED interior lighting
- Powered solar day and blackout night shades
- Central vacuum system
- Aire-Secure™ travel locks for all pocket doors
- Whirlpool® stainless-steel residential refrigerator with ice maker and water dispenser
- Induction cooktop with matching wood cover
- Whirlpool® 1.9 cu. ft. convection microwave oven
- Fisher & Paykel® dishwasher
- Solid-surface countertops with Blanco single-bowl granite sink and dimmable LED accent lighting
- Maxxair® power vent exhaust fan with intake and touch screen control
- Large, deep drawer for waste basket with easy access trash chute (trash chute not available in 45F, 45R)
- Select Comfort® Sleep Number® King-size mattress
- 32" Samsung® QLED 4K UHD Smart TV
- Bose® sound bar with universal remote control
- Sony® Blu-ray™ player
- Ceiling fan
- Nightstands with solid-surface tops
- Large cedar-lined wardrobe
- Solid-surface countertops with integrated glass sink and dimmable LED accent lighting
- Porcelain tile shower walls and floor with skylight and frameless glass shower door
- Teakwood shower seat (N/A 45F)
- Pivoting shower head and separate hand-held spray wand
- Aqua View SHOWERSEER™ water saving system
- Thetford® macerator toilet in main bath (N/A 452)
- (Bose®) sound bar with universal remote control
- Storage safe

Optional Equipment

OPTIONAL EQUIPMENT INSTALLED ON THIS VEHICLE
BY MANUFACTURER

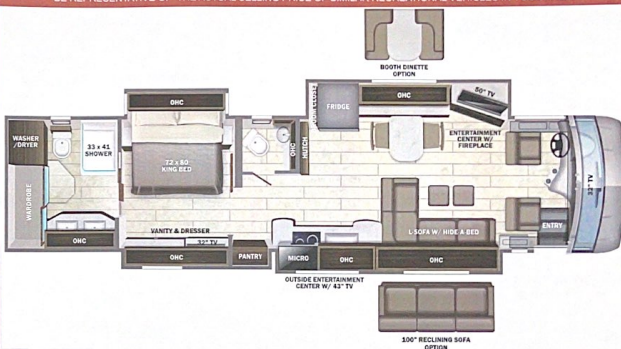
Base price	796,960.00
Linen	n/c
Almond Cabinetry	30.00
Exclude Linen Front	n/c
Overhead Accent Wood	n/c
Swiss Phone Tile	n/c
Coral Reef Paint	30.00
USA Standards	n/c
22 SP 54000 320° 605 TAG	n/c
AXLE 2021 EMISSIONS NA09	n/c
Dishwasher Drawer	n/c
Fireplace	n/c
Travler Direct TV	n/c
Satellite Dish	n/c
Dual Solar Panels	2,775.00
Free Standing Table with 4 Chairs	n/c
Reclining Power Sofa 100"	743.00

UNIT TOTAL 800,558.00

DEALER INSTALLED OPTIONS

Manufacturer's Suggested Retail Price \$800,558.00

TOTAL AMOUNT DOES NOT INCLUDE STATE AND LOCAL TAXES OR LICENSE FEES. THE PRICE SHOWN ABOVE MAY OR MAY NOT BE REPRESENTATIVE OF THE ACTUAL SELLING PRICE OF SIMILAR RECREATIONAL VEHICLES IN YOUR AREA.



DIMENSIONS

Exterior height:.....152.00"
Exterior width:.....101.00"

CAPACITIES

Fresh water tank (gals.):.....100.00
Gray water tank (gals.):.....62.00
Black water/toilet tank (gals.):.....41.00
Propane (lbs.):.....0
Propane (gals.):.....0
Water heater (gals.):.....0.00

TIRES

Tire size (front):.....365/70R22.5
Tire size (mid):.....315/80R22.5
Tire size (rear):.....315/80R22.5

Some dimensions may be rounded and may vary from the actual dimensions
***Weights may be estimated calculations and may vary from the actual weight
- refer to the vehicle weight labels for actual weights***
Floorplans, features and specifications are subject to change without notice.