



**ENTEGR A**  
COACH®

**Anthem**



Serial #: 1JSMEACV4N14Z8062  
Model: 44Z ANTHEM MHA  
VIN#: 4VZAU1D99NC090941  
Model Year: 2022 Dealer Name: NATIONAL INDOOR RV CENTERS  
1350 HURRICANE SHOALS ROAD  
LAWRENCEVILLE, GA 30043  
USA

**Standard Equipment**

THE FOLLOWING ITEMS ARE STANDARD ON THIS MODEL AT NO EXTRA CHARGE

- EXTERIOR**
- Scania® K2 raised-rail chassis
  - Cummins® L9 turbocharged 450 HP engine with 1,200 lb. ft. torque at 1,400 RPM
  - Allison® 3,000 MH 6-speed transmission
  - Side-mounted, parallel-flow radiator
  - Rayco® Granitron® front axle with independent front suspension - 20,000 lb. rating
  - Motor rear axle - 20,000 lb. rating
  - Tag axle with air dump - 12,000 lb. rating
  - Bilstein® shocks - 60mm front axle & 46mm rear tag axle
  - Equalizer™ hydraulic automatic coach leveling
  - Valid Truair™ air leveling system with auxiliary air compressor
  - Roof 4" arched aluminum trusses fitted with batt insulation and reflective Flexfoam® topped with 3/8" plywood decking then one-piece fiberglass
  - Side walls - 2 1/2" exterior walls with Alum-Tu™ welded tubular aluminum studs on 16" centers or less, fitted with batt and Flexfoam® insulation, then covered with high-gloss gelcoat fiberglass (R-16)
  - Floors - 2 1/4" wood trusses on 16" centers or less fitted with batt and Flexfoam® insulation then topped with 3/4" Tely plywood decking (R-33)
  - X-Brige™ bracing welded into chassis frame
  - Aqua-Hot® heated basement storage
  - Entegra-exclusive Reela-Torque flush-mounted 12V solid-state system
  - Onan® 12,500-watt diesel generator, with automatic start, on powered slide-out tray
  - 3,000-watt pure sine wave inverter
  - (4) 110 AGM batteries (6V/350 amp hrs ea.)
  - 50-amp power cord on electric powered reel
  - Smart automatic transfer switch with surge protection
  - (3) 15,000 BTU A/C units with heat pumps and condensation drain system
  - Aqua-Hot® 4500 hydronic water and heating system with in-floor heat throughout and engine preheat
  - Safe-Con® Macerator holding tank dump system with manual gate valves, manual backup and metal door
  - TruTank™ ultrasonic tank monitoring system displayed on VegaTouch screen
  - Premier Bus Armor® stainless-steel trim
  - Power rear engine door with manual override
  - Dual roof-mounted Clarion® Vision dual-pitched patio awnings with LED lights
  - Clarion® power entrance door awning with LED lights
  - Clarion® Ultra slideout awnings
  - Clarion® Ultra power window awnings
  - Frames, dual pane, tinted, safety-glass windows
  - L8 grab handle with doorbell and keypad system for keyless entry
  - 43" Samsung® QLED 4K UHD Smart TV with tilt, swivel, and extend adjustment
  - JBL® radio and speakers with USB port and microphone
  - Chrome, heated, remote-control, side-view mirrors with integrated cameras and blind-spot indicators
  - Diamond Shield™ front protective film mask
  - Winegard® TRAVLER satellite dish (DIRECTV®) - standard with USA option
  - Winegard® Raycar Automatic powered TV antenna
  - Winegard® WiFi extender with 4G LTE
  - Heated exterior utility center with 5' LED Firefly® tank monitoring panel
  - Power slideout basement storage tray
  - 2.8 cu. ft. exterior Dometic® refrigerator/freezer on slideout tray

- INTERIOR**
- Valid 15" digital dash with quad core graphics processor, on-board diagnostics, selector knob and ability to display traditional instrument cluster, 360° camera system or GPS navigation
  - Blind spot monitoring system displayed on digital dash screen
  - X-Mile® 360° HD digital camera system
  - X-Mile™ XG04 infotainment system with dual 9" touchscreens, 800 navigation, Bluetooth®, Sirius XM™ and AM/FM tuner, integrated camera control, house mode whole-coach audio distribution and integrated Vega Touch coach control
  - Tire pressure monitoring system (TPMS) with temperature monitoring
  - E-Z Steer™ adjustable power steering assist
  - Steering wheel with integrated controls for cruise, wipers, radio and Bluetooth® phone functionality
  - Power lift and telescoping steering column
  - 1200 premium audio 11-speaker sound system with amplifier, speakers and DVC subwoofer
  - Ultra-Vision® one-piece wrap-around tinted windshield
  - 32" Samsung® QLED 4K UHD Smart TV in front overhead
  - Valid heated leather driver and passenger seats with powered 6-way adjustment, lumbar, recline and footrest functions
  - Powered flush stepwell cover
  - Powered adjustable brake and accelerator pedals
  - Powered front sun visors and privacy shades
  - (2) dual USB ports and (2) 12V sockets for charging
  - LED 8" fireplace with 5,000-BTU heating element (44B, 44Z)
  - Fifty® multiplex system with 10" VegaTouch touchscreen for complete integration of coach controls, with remote monitoring and control (mobile app available)
  - 50" Samsung® QLED 4K UHD Smart TV
  - Bose® sound bar with subwoofer and universal remote control
  - Sony® Blu-ray™ player
  - Premium leather vinyl furniture
  - Hand-laid porcelain tiled floors
  - LED interior lighting
  - Powered solar day and blackout night shades
  - Central vacuum system
  - Ase-Secu™ travel locks for all pocket doors
  - Whirlpool® stainless-steel residential refrigerator with ice maker and water dispenser
  - Induction cooktop with matching wood cover
  - Whirlpool® 1.8 cu. ft. convection microwave oven
  - Fisher & Paykel® dishwasher
  - Porcelain tile backsplash
  - Solid surface countertops with Blanco single-bowl granite sink and dimmable LED accent lighting
  - Maxxair® power vent exhaust fan with intake and touch screen control
  - Large, deep drawer for waste basket with easy access trash screen control
  - Select Comfort® Sleep Number® King-size mattress
  - 32" Samsung® QLED 4K UHD Smart TV
  - Bose® sound bar with universal remote control
  - Sony® Blu-ray™ player
  - Ceiling fan
  - Nightstands with solid-surface tops
  - Large cedar-lined wardrobe
  - Solid-surface countertops with integrated glass sink and dimmable LED accent lighting
  - Porcelain tile shower with skylight and clear glass shower door
  - Teakwood shower seat (N/A 44Z)
  - Fused shower head and separate hand-held spray wand
  - Aqua View SHOWERMISER™ water saving system
  - Thetford® macerator toilet in main bath (N/A 44Z)
  - Whirlpool® stacked washer and dryer
  - Storage safe

**Optional Equipment**

OPTIONAL EQUIPMENT INSTALLED ON THIS VEHICLE BY MANUFACTURER

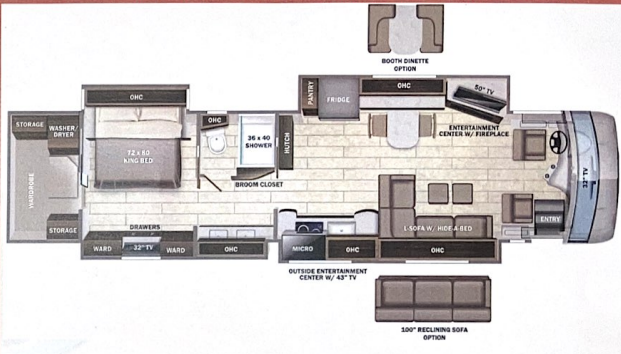
- Base price 630,105.00
- Desert n/c
- Almond Cabinetry 30.00
- Exclude Linen Front n/c
- Overhead Accent Wood n/c
- Valmetino Legend Tile 30.00
- Aqua Blue Paint n/c
- USA Standards n/c
- 22 SP 52000 350" 450 TAG n/c
- AXLE 2021 EMISSIONS NAO8 n/c
- Dishwasher Drawer n/c
- Fireplace n/c
- IN Motion Satellite Dish 30.00
- Free Standing Table with 4 Chairs n/c
- Reclining Power Sofa 100" 743.00
- SIS 19s pullout drawers in pantry, Delete TV over Cap Chair n/c
- SIS Add Aspire mattress n/c

UNIT TOTAL **630,938.00**

DEALER INSTALLED OPTIONS

**Manufacturer's Suggested Retail Price \$630,938.00**

TOTAL AMOUNT DOES NOT INCLUDE STATE AND LOCAL TAXES OR LICENSE FEES. THE PRICE SHOWN ABOVE MAY OR MAY NOT BE REPRESENTATIVE OF THE ACTUAL SELLING PRICE OF SIMILAR RECREATIONAL VEHICLES IN YOUR AREA.



**DIMENSIONS**

Exterior height: 152.00"  
Exterior width: 101.00"

**CAPACITIES**

Fresh water tank (gals.): 100.00  
Gray water tank (gals.): 62.00  
Black water/toilet tank (gals.): 41.00  
Propane (lbs.): 0  
Propane (gals.): 0  
Water heater (gals.): 0.00

**TIRES**

Tire size (front): 365/70R22.5  
Tire size (mid): 315/80R22.5  
Tire size (rear): 315/80R22.5

\*\*\*Some dimensions may be rounded and may vary from the actual dimensions\*\*\*  
\*\*\*Weights may be estimated calculations and may vary from the actual weight\*\*\*  
- refer to the vehicle weight labels for actual weights\*\*\*  
Floorplans, features and specifications are subject to change without notice.