



ENTEGRA
COACH®

Anthem



Serial #: 1JSMEACV6N14W8061
Model: 44W ANTHEM MHA
VIN#: 4VZAU1D9XNC090642
Model Year: 2022 Dealer Name: NATIONAL INDOOR RV CENTERS
11280 N SOLAR CANYON WAY
SURPRISE, AZ 85379
USA

51809

Standard Equipment

THE FOLLOWING ITEMS ARE STANDARD ON THIS MODEL
AT NO EXTRA CHARGE

EXTERIOR
partan® K2 raised-rail chassis
ummins® L9 turbocharged 450 HP engine with
50-lb. ft. torque at 1,400 RPM
lison® 3,000 MH 6-speed transmission
ide-mounted, parallel-airflow radiator
eyco® Granning® front axle with independent front
ension - 20,000 lb. rating
eritor rear axle - 20,000 lb. rating
ag axle with air dump - 12,000 lb. rating
ilstein® shocks- 60mm front axle & 46mm rear/tag
as
qualizer™ hydraulic automatic coach leveling
alid Truline air leveling system with auxiliary air
pressor
oof: 4" arched aluminum trusses filled with batt
lation and reflective Flexfoi® topped with 3/8"
wood decking then one-piece fiberglass
idewalls: 2-1/2" exterior walls with Alumina-Tru™
ded tubular aluminum studs on 16" centers or less,
d with batt and Flexfoi® insulation, then covered
1 high-gloss gelcoat fiberglass (R-16)
doors: 2" x 4" wood trusses on 16" centers or less
d with batt and Flexfoi® insulation then topped with
7-ply plywood decking (R-33)
-Bridge™ bracing welded into chassis frame
qua-Hot® heated basement storage
ntegra-exclusive Relia-Torque flush-mounted
/ slideout system
nan® 12,500-watt diesel generator, with
omatic start, on powered slide-out tray
000-watt pure sine wave inverter
1) L16 AGM batteries (6V/390 amp hrs. ea.)
0-amp power cord on electric powered reel
mart automatic transfer switch with surge
tection
3) 15,000-BTU A/C units with heat pumps and
ensation drain system
qua-Hot® 450D hydronic water and heating
tem with in-floor heat throughout and engine
heat
ani-Cor® Macerator holding tank dump system
1 manual gate valves, manual backup and metal
r
rutank™ ultrasonic tank monitoring system
layed on VegaTouch screen
remier Bus Armor 8" stainless-steel trim
ower rear engine door with manual override
ual roof-mounted Girard® Vision dual-pitched
o awnings with LED lights
irard® power entrance door awning with LED
ts
irard® Ultra slideout awnings
irard® Ultra power window awnings
rameless, dual-pane, tinted, safety-glass windows
it grab handle with doorbell and keypad system for
less entry
3" Samsung® QLED 4K UHD Smart TV with tilt,
vel, and extend adjustment
3L radio and speakers with USB port and
aptacle
hrome, heated, remote-control, side-view mirrors
1 integrated cameras and blind-spot indicators
iamond Shield™ front protective film mask
inegard® TRAVLER satellite dish DIRECTV® -
rdard with USA option
inegard® Rayzar Automatic powered TV antenna
inegard® WiFi extender with 4G/LTE
eated exterior utility center with 5" LED Firefly®
< monitoring panel
ower slideout basement storage tray
.8-cu. ft. exterior Dometic® refrigerator/freezer on
eout tray

INTERIOR
- Valid 15" digital dash with quad core graphics processor,
on-board diagnostics, selector knob and ability to display
traditional instrument cluster, 360° camera system or GPS
navigation
- Blind spot monitoring system displayed on digital dash
screen
- Xite™ 360° HD digital camera system
- Xite™ XSG4 infotainment system with dual 9" touchscreens,
iGO navigation, Bluetooth®, Sirius XM™ and AM/FM tuner,
integrated camera control, house mode whole-coach audio
distribution and integrated VegaTouch coach control
- Tire pressure monitoring system (TPMS) with temperature
monitoring
- E-Z Steer™ adjustable power steering assist
- Steering wheel with integrated controls for cruise, wipers,
radio and Bluetooth® phone functionality
- Power tilt and telescoping steering column
- JBL® premium audio 11-speaker sound system with
amplifier, speakers and DVC subwoofer
- Ultra-Vision® one-piece wrap-around tinted windshield
- 32" Samsung® QLED 4K UHD Smart TV in front overhead
- Villa® heated leather driver and passenger seats with
powered 6-way adjustment, lumbar, recline and footrest
functions
- Powered flush stepwell cover
- Powered adjustable brake and accelerator pedals
- Powered front sun visors and privacy shades
- (2) dual USB ports and (2) 12V sockets for charging
- LED-lit fireplace with 5,000-BTU heating element (44B,
44Z)
- Firefly multiplex system with 10" VegaTouch touchscreen for
complete integration of coach controls, with remote monitoring
and control (mobile app available)
- 50" Samsung® QLED 4K UHD Smart TV
- Bose® sound bar with subwoofer and universal remote
control
- Sony® Blu-ray™ player
- Premium leather Villa® furniture
- Hand-laid porcelain tiled floors
- LED interior lighting
- Powered solar day and blackout night shades
- Central vacuum system
- Aire-Secure™ travel locks for all pocket doors
- Whirlpool® stainless-steel residential refrigerator with ice
maker and water dispenser
- Induction cooktop with matching wood cover
- Whirlpool® 1.9-cu. ft. convection microwave oven
- Fisher & Paykel dishwasher
- Porcelain tile backsplash
- Solid-surface countertops with Blanco single-bowl granite
sink and dimmable LED accent lighting
- Maxxair® power vent exhaust fan with intake and touch
screen control
- Large, deep drawer for waste basket with easy access trash
chute (trash chute not available in 44F, 44R)
- Select Comfort® Sleep Number® King-size mattress
- 32" Samsung® QLED 4K UHD Smart TV
- Bose® sound bar with universal remote control
- Sony® Blu-ray™ player
- Ceiling fan
- Nightstands with solid-surface tops
- Large cedar-lined wardrobe
- Solid-surface countertops with integrated glass sink and
dimmable LED accent lighting
- Porcelain tile shower with skylight and clear glass shower
door
- Teakwood shower seat (N/A 44F)
- Fixed shower head and separate hand-held spray wand
- Aqua View SHOWERMISER™ water saving system
- Thetford® macerator toilet in main bath (N/A 44Z)
- Whirlpool® stacked washer and dryer
- Storage safe

Optional Equipment

OPTIONAL EQUIPMENT INSTALLED ON THIS VEHICLE
BY MANUFACTURER

Base price 618,855.00
Bavarian n/c
Almond Cabinetry n/c
Exclude Linen Front n/c
Overhead Accent Wood n/c
Tapestry Bianco Tile n/c
Cobalt Blue Paint n/c

USA Standards
22 SP 52000 320" 450 TAG n/c
AXLE 2021 EMISSIONS NA08 n/c
Dishwasher Drawer
Winegard Trav'ler
Satellite Antena W/DISH n/c
Network 375.00
Booth Dinette 1,125.00
Theater Seating Sofa n/c
Sofa with TV Lift n/c

UNIT TOTAL

620,355.00

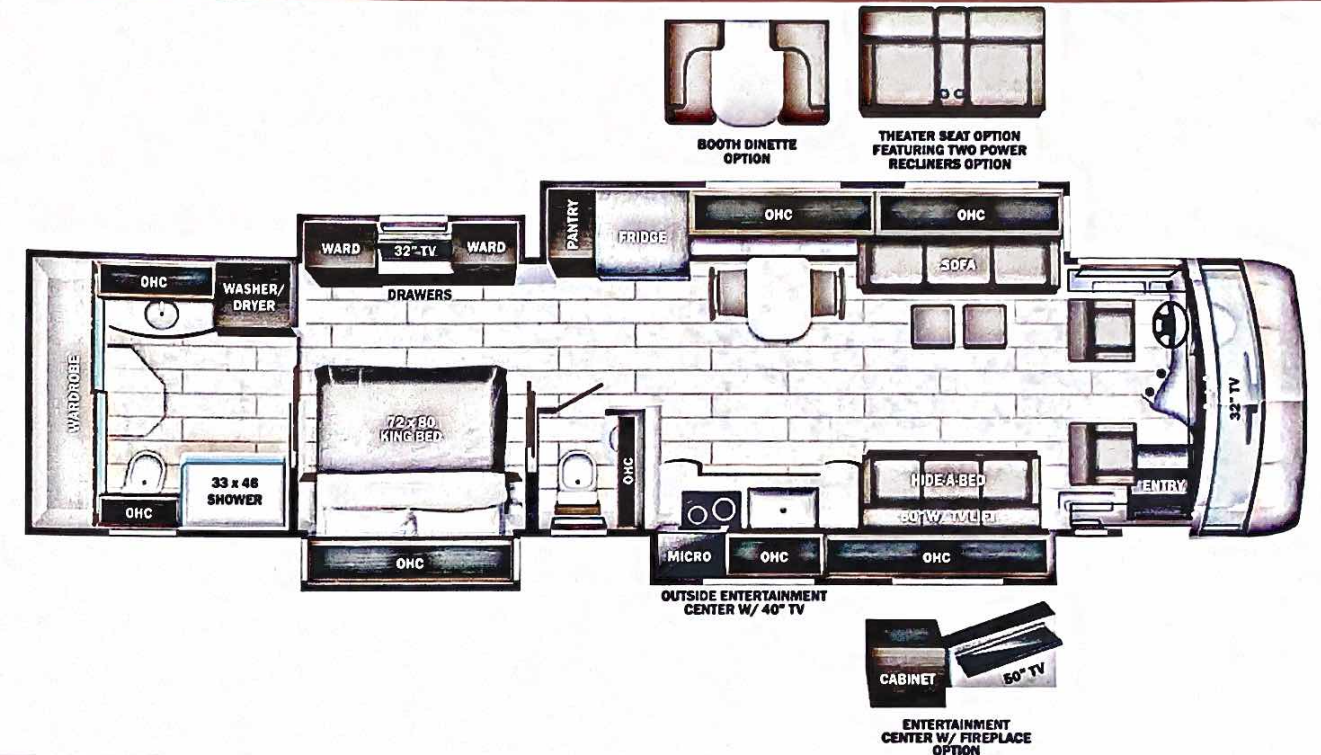
DEALER INSTALLED OPTIONS

SIS Add Aspire mattress

n/c

Manufacturer's Suggested Retail Price \$620,355.00

TOTAL AMOUNT DOES NOT INCLUDE STATE AND LOCAL TAXES OR LICENSE FEES. THE PRICE SHOWN ABOVE MAY OR MAY NOT BE REPRESENTATIVE OF THE ACTUAL SELLING PRICE OF SIMILAR RECREATIONAL VEHICLES IN YOUR AREA.



DIMENSIONS

Exterior height:.....152.00"
Exterior width:.....101.00"

CAPACITIES

Fresh water tank (gals.):...100.00
Gray water tank (gals.):....62.00
Black water/toilet tank
(gals.):.....41.00
Propane (lbs.):.....0
Propane (gals.):.....0
Water heater (gals.):.....0.00

TIRES

Tire size (front):.....365/70R22.5
Tire size (mid):.....315/80R22.5
Tire size (rear):.....315/80R22.5

Some dimensions may be rounded and may vary from the actual dimensions
***Weights may be estimated calculations and may vary from the actual weight
- refer to the vehicle weight labels for actual weights***
Floorplans, features and specifications are subject to change without notice.