



Serial #: 1UJMJABU3M1D4069
Model: 36H PRECEPT PRESTIGE MHA
VIN#: 1F66F5DN9L0A09878
Model Year: 2021 Dealer Name: NATIONAL INDOOR RV CENTERS

11280 N SOLAR CONYON WAY
SURPRISE, AZ 85379
USA

Precept Prestige

\$5861



Standard Equipment

THE FOLLOWING ITEMS ARE STANDARD ON THIS MODEL
AT NO EXTRA CHARGE

- Exterior
- Ford® F53 chassis
 - 7.3L V-8 350 HP engine with 468 ft.-lb. torque
 - 6-speed automatic TorqShift® transmission with overdrive and tow haul mode
 - 210-amp alternator
 - 3-rated highway tires- 255/80R22.5
 - Front and rear disc, 4-wheel anti-lock brakes
 - 5,000 lb. rear hitch receiver with dual connector and 7-pin plug
 - 12V chassis battery
 - 120 in. panoramic windshield
 - StrongholdVBL™ Vacuum-Bond laminated roof, floor and sidewalls
 - Bead-foam insulation (R-24 max roof, R-9 max floor, R-8 max walls)
 - One-piece seamless crowned fiberglass roof
 - Premium Sikkers full body paint
 - Flush-mount LED marker lights
 - Third brake light
 - Entrance door with industry's largest travel view window
 - One-piece, seamless, fiberglass front and rear caps
 - Electric-powered entrance step
 - Lockable pass-through storage compartments with slam latches
 - 12V house battery
 - 12V demand water pump
 - Theford® San-Con Turbo Macerator system
 - 24.5 gal. propane tank (83 lb.)
 - LP quick-connect hookup
 - Exterior utility center
 - Winterization drain system
 - Outside shower
 - (2) 6V AGM (220AH) house batteries on slideout tray
 - Solar prep
 - Porch light

- Interior
- 6-way power and swivel driver and passenger seats
 - Soft-touch, vinyl wrapped automotive dash
 - Tilt steering wheel
 - A/C and cruise control
 - Power front privacy shade with manual side privacy shades
 - LED lit hardwood fascia
 - Deluxe hidden cabinet hinges
 - JAYCOMMAND® powered by Firefly
 - 84 in. interior ceiling height with padded vinyl ceiling
 - Handwood cabinet doors and drawers
 - High-intensity recessed LED ceiling lights
 - Ball-bearing drawer guides
 - Furrone® stainless recessed gas cooktop
 - Convection microwave oven
 - 21 cu ft. residential refrigerator with ice and water in door
 - Powered roof vent in kitchen with wall switch
 - Water filtration system
 - Jayco-exclusive easy operation legless dinette table
 - 2-point lap safety belts in all designated seating locations
 - Furrone® electric fireplace
 - Blu-Ray™ player in living area
 - 35,000-BTU auto-ignition ducted furnace
 - Prep for satellite dish
 - Cable TV hookup with RG-6 coax & video selector switch
 - Digital antenna with signal booster
 - One-piece, fiberglass shower with glass door, skylight and light
 - LED lit stainless steel bathroom sink
 - Porcelain toilet with foot flush
 - Powered roof vent in bathroom with wall switch
 - Walk-around King-sized bed with bedspread and nightstands
 - Under-bed storage (select models)
 - Smoke alarm
 - Carbon monoxide detector
 - LED TV in bedroom
 - Bunks with industry-exclusive 300 lb. capacity each (365)
 - Decorative kitchen backsplash
- Customer Value Package
- JFIDE® PLUS: Computer-balanced driveshaft, variable-rate jounce bumpers, heavy-duty front and rear stabilizer bars, SACHS shocks, Michelin® 22.5" tires
 - Automatic hydraulic leveling jacks
 - 15,000 BTU A/C unit with heat pump and second 13,500 BTU A/C unit
 - Pioneer® 8" infotainment center with Apple CarPlay® and Android Auto™
 - Backup and side-view cameras
 - Frameless windows
 - Electric patio awning with LED lights
 - Slideout cover awnings
 - Exterior entertainment center with outside speakers, LED TV mounted on swivel bracket and single-disc DVD/FM radio
 - Onan® Marquis Gold Genset 5,500-watt generator with auto-gen start
 - 2000-watt inverter
 - 50-amp electrical service
 - 10 gal. gas/electric water heater
 - LED lit solid surface kitchen countertops with integrated stainless steel sink and sink covers
 - LED living room TV
 - Day/night roller shades
 - Removable driver/passenger cockpit table

Optional Equipment

OPTIONAL EQUIPMENT INSTALLED ON THIS VEHICLE
BY MANUFACTURER

- | | |
|--------------------------|------------|
| Base price | 190,043.00 |
| Addison | n/c |
| Quartz Paint Package | n/c |
| USA Standards | n/c |
| Customer Value Package | 11,250.00 |
| Residential Refrigerator | n/c |
| Washer/Dryer Stackable | 2,048.00 |
| Cooktop with Oven | 713.00 |
| Power Theater Seating | 2,018.00 |
| Sofa | 2,993.00 |
| Front Overhead Bunk | |

UNIT TOTAL

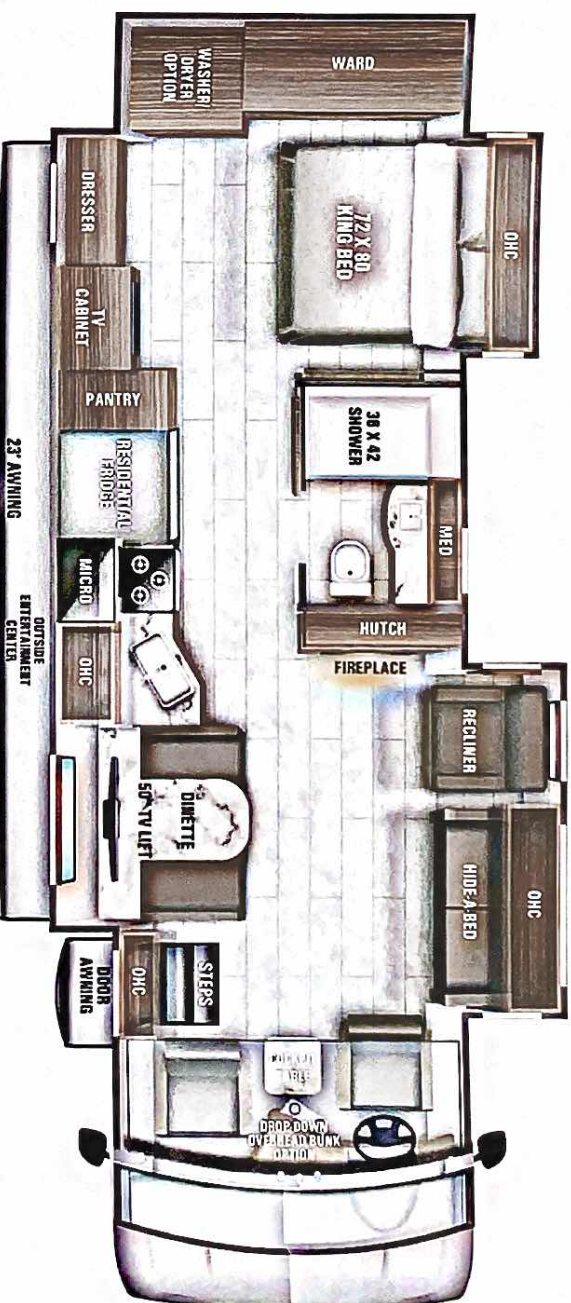
209,065.00

DEALER INSTALLED OPTIONS

Manufacturer's Suggested Retail Price

\$209,065.00

TOTAL AMOUNT DOES NOT INCLUDE STATE AND LOCAL TAXES OR LICENSE FEES. THE PRICE SHOWN ABOVE MAY OR MAY NOT BE REPRESENTATIVE OF THE ACTUAL SELLING PRICE OF SIMILAR RECREATIONAL VEHICLES IN YOUR AREA.



DIMENSIONS

Exterior height:.....154.00"
Exterior width:.....101.00"

CAPACITIES

Fresh water tank (gals.):...72.00
Gray water tank (gals.):...90.00
Black water/toilet tank (gals.):.....40.00
Propane (lbs.):.....83
Propane (gals.):.....19
Water heater (gals.):.....10.00

TIRES

Tire size (front) :.....255/80R22.5G
Tire size (mid) :.....
Tire size (rear) :.....255/80R22.5G

Some dimensions may be rounded and may vary from the actual dimensions
***Weights may be estimated calculations and may vary from the actual weight
- refer to the vehicle weight labels for actual weights***
Floorplans, features and specifications are subject to change without notice.

