



Precept



Serial #: 1UJMJABT5N1UG4152
 Model: 34G PRECEPT MHA
 VIN#: 1F66F5DN9M0A18212
 Model Year: 2022 Dealer Name: NATIONAL INDOOR RV CENTERS
 11280 N SOLAR CANYON WAY
 SURPRISE, AZ 85379
 USA

Manufacturer's Suggested Retail Price \$209,162.00

TOTAL AMOUNT DOES NOT INCLUDE STATE AND LOCAL TAXES OR LICENSE FEES. THE PRICE SHOWN ABOVE MAY OR MAY NOT BE REPRESENTATIVE OF THE ACTUAL SELLING PRICE OF SIMILAR RECREATIONAL VEHICLES IN YOUR AREA.

Standard Equipment

THE FOLLOWING ITEMS ARE STANDARD ON THIS MODEL AT NO EXTRA CHARGE

- EXTERIOR**
- Ford® F53 chassis
 - GVWR- 22,000 lb. (31UL, 34B, 34G) 24,000 lb. (36A, 36C)
 - GCWR- 26,000 lb. (31UL, 34B, 34G), 30,000 lb. (36A, 36C)
 - 7.3L V-8 350 HP engine with 468 ft.-lb. torque
 - 6-speed automatic TorqShift® transmission with overdrive and low haul mode
 - 210-amp alternator
 - G-rated highway tires- 235/80R22 5 (31UL, 34B, 34G), 255/80R22 5 (36A, 36C)
 - Front and rear disc, 4-wheel anti-lock brakes
 - 5,000 lb. rear hitch receiver with dual connector and 7-pin plug
 - 12V chassis battery
 - 80 gal. fuel tank
 - 120 in. panoramic windshield
 - StrongholdVBL™ roof, floor and sidewalls
 - Bead foam insulation (R-24 max roof, R-9 max floor, R-5 max walls)
 - One-piece, seamless, fiberglass front and rear caps
 - One-piece, seamless, crowned fiberglass roof
 - Fiberglass exterior walls with vinyl graphics
 - Entrance door with industry's largest travel-view window
 - Electric-powered entrance step
 - Lockable, pass-through storage compartments with slam latches
 - Heated holding tanks (12V pads)
 - 16.5 gal. propane tank (56 lb.)
 - LP quick-connect hookup
 - Exterior utility center
 - Winterization drain system
 - Outside shower
 - 12V demand water pump
 - Transfer switch with reverse polarity protection
 - (2) 6V AGM (220AH) house batteries on slideout tray
 - 130W solar panel with dual controller
 - Flush-mount LED marker lights
 - Third brake light

- INTERIOR**
- 6-way power and swivel driver/passenger seats
 - Soft-touch, vinyl-wrapped automotive dash
 - Tilt steering wheel
 - A/C and cruise control
 - Power front privacy shade with manual side privacy shades
 - JAYCOMMAND™ powered by Firefly
 - 84 in. interior ceiling height with padded vinyl ceiling
 - High-intensity, recessed LED ceiling lights
 - LED-lit hardwood fascia
 - Hardwood cabinet doors and drawers
 - Ball-bearing drawer guides
 - Jayco-exclusive, easy-operation legless dinette table
 - 2-point lap safety belts in all designated seating locations
 - Auto-ignition ducted furnace- 30,000 BTU (31UL), 35,000-BTU (34B, 34G, 36C), (2)30,000 BTU (31UL)
 - Furrion® electric fireplace (34B, 34G, 36C)
 - Prep for satellite dish
 - Cable TV hookup with RG-6 coax and video selector switch
 - Winegard 2.0 WiFi/4G antenna
 - Residential refrigerator
 - Furrion® all-in-one cooktop and oven
 - Residential-size microwave
 - Decorative kitchen backsplash
 - Water filtration system
 - Shower with decorative surround, glass door, skylight and light
 - Stainless steel bathroom sink
 - Porcelain toilet with foot flush
 - Powered roof vent in bathroom with wall switch
 - Walk-around King-size bed with bedspread and nightstands
 - LED TV in bedroom
 - Under-bed storage (select models)
 - Large wardrobes
 - Bunks with industry-exclusive 300 lb. capacity each (36A)
 - Smoke alarm
 - Carbon monoxide detector

- CUSTOMER VALUE PACKAGE**
- JRIE® PLUS Computer-balanced driveshaft, variable-rate front and rear jounce bumpers, heavy-duty front and rear stabilizer bars, SACHS shocks, 22.5" Michelin® tires
 - Automatic hydraulic leveling jacks
 - Frameless windows
 - 15,000 BTU A/C unit with heat pump and second 13,500 BTU A/C unit
 - Exterior entertainment center with outside speakers, LED TV mounted on swivel bracket and single-disc DVD/MP3 radio
 - Electric patio awning with LED lights
 - Slideout cover awnings
 - Onan® Marquis Gold Genset 5,500-watt generator with auto-gen start
 - 1,000-watt inverter
 - 50-amp electrical service
 - Girard® tankless water heater
 - Sony® infotainment center with Apple® CarPlay™ and Android Auto™
 - Backup and side-view cameras
 - Removable driver/passenger cockpit table
 - LED-lit, solid-surface kitchen countertops with integrated stainless steel sink and sink covers
 - LED HD Smart Fire TV in living area
 - Day/night roller shades in living area

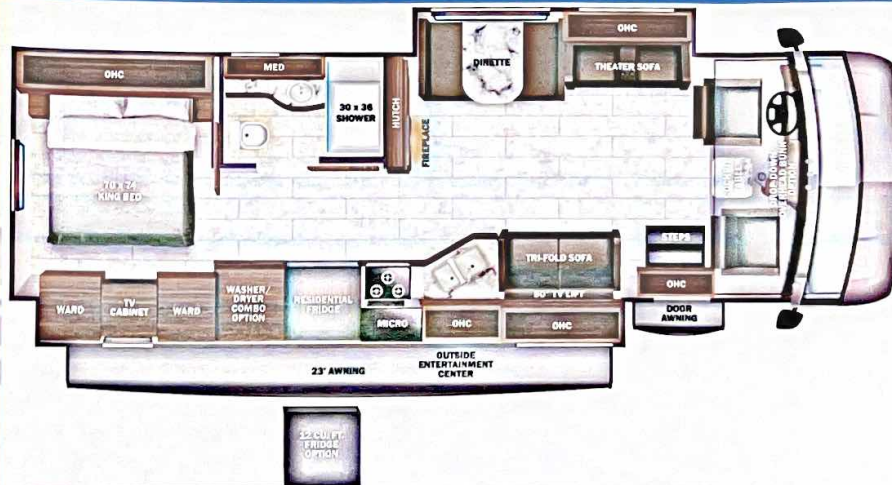
Optional Equipment

OPTIONAL EQUIPMENT INSTALLED ON THIS VEHICLE BY MANUFACTURER

Base price	192,833.00
Modern Farmhouse	443.00
Oyster Bay Graphics	
Package	n/c
USA Standards	n/c
Customer Value Package	11,250.00
12 Cu. Ft. Refrigerator	1,643.00
No Washer/Dryer	n/c
Laminated Rear Wall	n/c
Front Overhead Bunk	2,993.00

UNIT TOTAL 209,162.00

DEALER INSTALLED OPTIONS



DIMENSIONS

Exterior height:.....154.00"
 Exterior width:.....101.00"

CAPACITIES

Fresh water tank (gals.):...72.00
 Gray water tank (gals.):...40.00
 Black water/toilet tank (gals.):...50.00
 Propane (lbs.):...56
 Propane (gals.):...13
 Water heater (gals.):...0.00

TIRES

Tire size (front):.....235/80R22.5G
 Tire size (mid):.....
 Tire size (rear):.....235/80R22.5G

Some dimensions may be rounded and may vary from the actual dimensions
 Weights may be estimated calculations and may vary from the actual weight - refer to the vehicle weight labels for actual weights
 Floorplans, features and specifications are subject to change without notice.

