



ENTEGRA COACH®

Aspire

Serial #: 1JSMACVXN13R8063
 Model: 44R ASPIRE MHA
 VIN#: 4VZAU1D95NCC090936
 Model Year: 2022 Dealer Name: NATIONAL INDOOR RV CENTERS

4640 NEXUS WAY
 NORTH LAS VEGAS, NV 89115



Standard Equipment

THE FOLLOWING ITEMS ARE STANDARD ON THIS MODEL AT NO EXTRA CHARGE

- EXTERIOR**
- Spartan® K2 raised-rail chassis
 - Cummins® L9 turbocharged 450 HP engine with 1,250-lb. ft. torque at 1,400 RPM
 - Allison® 3,000 MH 6-speed transmission
 - Side-mounted, parallel-airflow radiator
 - Reyco® Graning® front axle with independent front suspension - 17,000 lb. rating
 - Mentor rear axle - 20,000 lb. rating (Dana® rear axle - 24,000 lb. rating on 40P)
 - Tag axle with air dump - 12,000 lb. rating (N/A 40P)
 - Bilstein® 46mm shocks
 - Equalizer™ hydraulic automatic coach leveling
 - Floor: 4 arched aluminum trusses filled with batt insulation and reflective FlexiGlo® topped with 3/8" plywood decking then one-piece Iberglass
 - Sidewalls: 2-1/2" exterior walls with Alumna-Tru™ welded tubular aluminum studs on 16" centers or less, filled with batt and FlexiGlo® insulation, then covered with high-gloss gelcoat Iberglass (R-16)
 - Floors: 2" x 4" wood trusses on 16" centers or less filled with batt and FlexiGlo® insulation then topped with 3/4" 7-ply plywood decking (R-33)
 - X-Bridge™ bracing welded into chassis frame
 - Aqua-Hot® heated basement storage
 - Insulated front and rear caps (R-24)
 - Entegra-exclusive Relia-Torque flush-mounted 12V slideout system
 - Onan® 10,000-watt diesel generator, with automatic start, on slide-out tray
 - (3) 15,000-BTU A/C units with heat pumps and condensation drain system
 - Aqua-Hot® 400D hydronic water and heating system with in-floor heat throughout
 - Sami-Cord® Maceerator holding tank dump system with manual gate valves, manual backup and metal door
 - Black holding tank sprayer
 - City and tank water filtration system
 - Winterizing drain system
 - TruLink™ ultrasonic tank monitoring system displayed on Vega Touch screen
 - Water hose with electric reel
 - Power rear engine door with manual override
 - Dual roof-mounted Girard® Vision dual-pitched patio awnings with LED lights
 - Girard® power entrance door awning with LED lights
 - Ultra slideout awnings
 - Girard® window awnings
 - Frameless, dual-pane, tinted, safety-glass windows
 - Lit grab handle with doorbell and keypad system for keyless entry
 - 43" Samsung® 4K UHD Smart TV with tilt, swivel, and extend adjustment
 - JBL radio and speakers with USB port and receptacle
 - Chrome, heated, remote-control, side-view mirrors with integrated cameras
 - Diamond Shield™ front protective film mask
 - LED accent lights under passenger slideout rooms
 - Winegard® TRAVLER satellite dish DIRECTV® - standard with USA option
 - Winegard® Rayzar Z1 TV antenna
 - Winegard® WiFi extender with 4G/LTE
 - Heated exterior utility center with 5-LED Firefly® tank monitoring panel
 - Slideout basement storage tray

- INTERIOR**
- Valid 12.3" digital dash with quad core graphics processor, on-board diagnostics, selector knob and ability to display traditional instrument cluster, 360° camera system or GPS navigation
 - Xite™ 360° HD digital camera system
 - Xite™ XSG4 infotainment system with 9" touchscreen, iGO navigation, Bluetooth®, Sirius XM™ and AM/FM tuner, integrated camera control and house mode whole-coach audio distribution
 - Tire pressure monitoring system (TPMS) with temperature monitoring
 - E-Z Steer™ adjustable power steering assist
 - Steering wheel with integrated controls for cruise, wipers, radio and Bluetooth® phone functionality
 - Manual tilt and telescoping steering column
 - JBL® premium audio 5-speaker sound system with amplifier, speakers and DVC subwoofer
 - Ultra-Vision® one-piece wrap-around tinted windshield
 - 32" Samsung® LED 1080P Smart TV in front overhead
 - Villa® leather driver and passenger seats with powered 6-way adjustment, lumbar and footrest functions
 - Powered flush stepwell cover
 - Powered adjustable brake and accelerator pedals
 - Powered front sun visors and privacy shades
 - (2) dual USB ports and (2) 12V sockets for charging
 - Firefly multiplex system with 10" VegaTouch touchscreen for complete integration of coach controls (mobile app available)
 - 50" Samsung® 4K UHD Smart TV
 - Bose® sound bar with subwoofer and universal remote control
 - Sony® Blu-ray™ player
 - Premium leather Villa® furniture
 - Hand-laid porcelain tiled floors
 - LED interior lighting
 - Manual solar day shades and blackout night shades
 - Central vacuum system
 - Aire-Secure™ travel locks for all pocket doors
 - Removable screen on entry door
 - Bar area with beverage chiller and rain glass upper cabinet door with LED accent lighting (44R only)
 - Window with slider and screen
 - Whirlpool® stainless-steel residential refrigerator with ice maker and water dispenser
 - Induction cooktop with matching wood cover
 - Whirlpool® 1.9-cu. ft. convection microwave oven
 - Fisher & Paykel dishwasher
 - Solid-surface countertops with stainless steel sink and dimmable LED accent lighting
 - Maxxair® power vent exhaust fan with intake and touch screen control
 - Large, deep drawer for waste basket with easy access trash chute (trash chute not available on 40P, 44F and 44R)
 - King-size gel memory-foam mattress
 - 32" Samsung® LED 1080P Smart TV
 - Bose® sound bar with universal remote control
 - Sony® Blu-ray™ player
 - Ceiling fan
 - Nightstands with solid-surface tops
 - Large cedar-lined wardrobe
 - Solid-surface countertops with integrated sink and dimmable LED accent lighting
 - Textured porcelain tile shower with skylight and clear glass shower door
 - Teakwood shower seat (N/A 44F)
 - Fixed shower head and separate hand-held spray wand
 - Aqua View SHOWERMAISER™ water saving system
 - Theodor® macerator toilet in main bath (N/A 44Z)
 - Theodor® Aqua-Magic toilet with foot flush in mid bath (44B, 40P)
 - Maxxair® power exhaust fan with intake
 - Whirlpool® stacked washer and dryer
 - Storage sale

Optional Equipment

OPTIONAL EQUIPMENT INSTALLED ON THIS VEHICLE BY MANUFACTURER

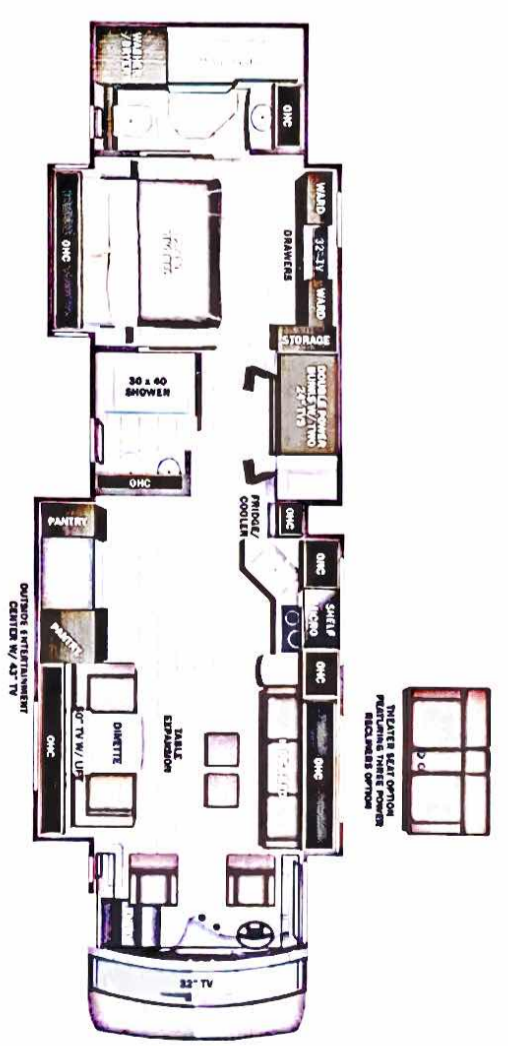
Base price	556,230.00
Shadow	n/c
Linen Glazed Cabinetry	30.00
Front Overhead	
Accent Wood	n/c
Black Cherry Paint	30.00
USA Standards	n/c
22 SP 4900 320" 450 TAG	
AXLE 2021 EMISSIONS NAO7	
Dishwasher Drawer	n/c
Winegard Travler	
Satellite Antenna W/DISH Network	30.00
Four Batteries	1,643.00
No Theater Seating Sofa	n/c
Sleepmade Gel Memory Mattress	
SIS Ins special paint	570.00

UNIT TOTAL **558,533.00**

DEALER INSTALLED OPTIONS

Manufacturer's Suggested Retail Price \$558,533.00

TOTAL AMOUNT DOES NOT INCLUDE STATE AND LOCAL TAXES OR LICENSE FEES. THE PRICE SHOWN ABOVE MAY OR MAY NOT BE REPRESENTATIVE OF THE ACTUAL SELLING PRICE OF SIMILAR RECREATIONAL VEHICLES IN YOUR AREA.



- DIMENSIONS**
- Exterior height: 152.00*
 - Exterior width: 101.00*
- CAPACITIES**
- Fresh water tank (gals.): 100.00
 - Gray water tank (gals.): 62.00
 - Black water/toilet tank (gals.): 41.00
 - Propane (lbs.): 0
 - Propane (gals.): 0
 - Water heater (gals.): 0.00

- TIRES**
- Tire size (front): 315/80R22.5
 - Tire size (mid): 295/80R22.5
 - Tire size (rear): 295/80R22.5

Some dimensions may be rounded and may vary from the actual dimensions
 Weights may be estimated calculations and may vary from the actual weight
 - refer to the vehicle weight labels for actual weights***
 Floorplans, features and specifications are subject to change without notice.