



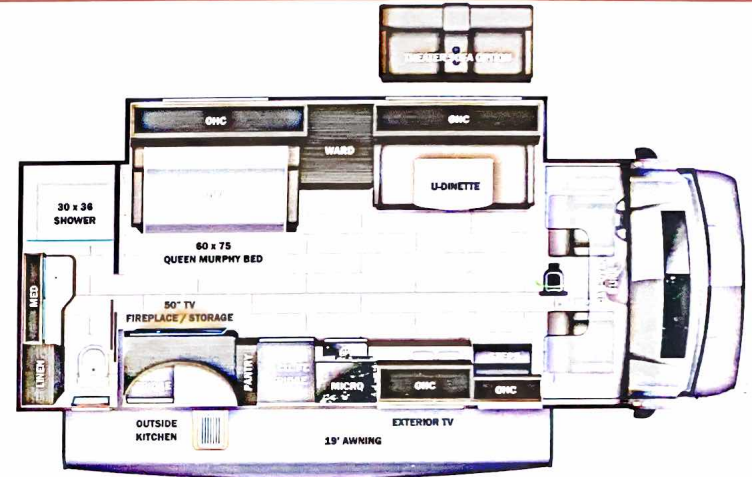
Odyssey



Serial #: 1JSLECBN4N1EM8256
 Model: 26M ODYSSEY MHC
 VIN#: 1FDXE4FN0PDD16023
 Model Year: 2022 Dealer Name: NATIONAL INDOOR RV CENTERS
 4640 NEXUS WAY
 NORTH LAS VEGAS, NV 89115
 USA

Manufacturer's Suggested Retail Price \$161,553.00

TOTAL AMOUNT DOES NOT INCLUDE STATE AND LOCAL TAXES OR LICENSE FEES. THE PRICE SHOWN ABOVE MAY OR MAY NOT BE REPRESENTATIVE OF THE ACTUAL SELLING PRICE OF SIMILAR RECREATIONAL VEHICLES IN YOUR AREA.



Standard Equipment

THE FOLLOWING ITEMS ARE STANDARD ON THIS MODEL AT NO EXTRA CHARGE

- EXTERIOR**
- Ford® E-450 chassis
 - GVWR - 14,500 lb.
 - GCWR - 22,000 lb.
 - 7.3L V-8 350 HP engine with 468 ft.-lb. torque
 - 6-speed TorqShift® series transmission with overdrive
 - 210-amp alternator
 - E-rated highway tires- LT225/75R16
 - Power anti-lock brakes with power steering
 - 7,500-lb. hitch with 750-lb. tongue capacity and 7-pin plug
 - 12V chassis battery
 - 55-gal. fuel tank
 - Onan® 4,000-watt MicroQuiet™ generator
 - Transfer switch with reverse polarity protection
 - 30-amp electrical service
 - 12V house battery
 - Solar prep
 - 15,000-BTU ducted A/C
 - 30,000-BTU auto-ignition furnace
 - 6-gal. gas/electric DSI auto-ignition water heater
 - 12.2-gal. propane tank (41-lb.)
 - LP quick-connect hookup
 - Exterior utility center
 - Winterization drain system
 - Outside shower
 - 12V demand water pump
 - Water filtration system
 - TuffShell™ vacuum-bond laminated roof, floor and sidewalls
 - Bead-foam insulation (R-24 max roof, R-9 max floor, R-5 max walls)
 - One-piece, seamless, fiberglass roof
 - Aluminum running boards
 - Fiberglass exterior walls with vinyl graphics
 - Frameless windows
 - Leveling jack prep
 - Remote-controlled, side-view mirrors
 - Entrance door with industry's largest travel-view window
 - Electric-powered entrance step with integrated house battery compartment
 - Slideout cover awnings
 - Pass-through storage compartment with light (select models)
 - Exterior LED TV with (2) high-output, manne-grade exterior speakers
 - 4-in. bumper tube sewer hose storage
 - Roof ladder (N/A 30Z)
 - Third brake light

- INTERIOR**
- Remote keyless cab entry
 - Swivel driver and passenger seats with boosters (N/A 25R)
 - Tire pressure monitoring system (TPMS)
 - Power windows and door locks
 - A/C and cruise control
 - Tilt steering wheel
 - Auxiliary start switch
 - Privacy curtains for cab area
 - Custom-molded ABS surround in cab-over area
 - 84-in. ceiling height
 - High-intensity recessed LED lights
 - LED-lit slideout fascia
 - Ball-bearing drawer guides
 - Pleated blackout shades
 - Interior command center
 - Entegra-exclusive, easy-operation legless dinette table
 - Interior entrance door grab handle
 - Prep for satellite dish
 - Cable TV hookup with RG-6 coax
 - Winegard 2.0 Wifi/4G antenna
 - Furrion® all-in-one cooktop and oven
 - Residential-size microwave
 - LED-lit pressed countertops
 - Recessed stainless steel kitchen sink with cutting board sink cover
 - Decorative kitchen backsplash
 - Pop-up charging station with 110 outlet and USB plugs
 - Shower with decorative surround, glass door, skylight and light
 - Recessed stainless steel bathroom sink
 - Porcelain toilet with foot flush
 - Powered roof vent in bathroom with wall switch
 - Queen-size bed with bedspread (King-sized in 27U only)
 - Under-bed storage (select models)
 - Bedroom TV prep
 - Large wardrobes
 - Overhead bunk with 750 lb. capacity and safety net
 - Bunks with industry-exclusive, 300-lb. capacity EACH (31F)
 - 2-point lap safety belts in all designated seating locations
 - Driver and passenger airbags
 - Smoke alarm
 - Carbon monoxide detector

- CUSTOMER VALUE PACKAGE**
- E-Z DRIVE™ Computer-balanced driveshaft, standard front and rear stabilizer bars, Hellwig® helper springs, rubber isolation body mounts
 - One-piece, seamless, fiberglass front cap
 - Automotive-bonded panoramic window in front cap with power shade
 - Heated holding tanks (12V pads)
 - Electric patio awning with LED lights
 - 1,000-watt inverter
 - Black tank flush
 - Sony® infotainment center with Apple CarPlay® and Android Auto™
 - Backup and side-view cameras
 - 8-cu.ft. gas/electric refrigerator
 - LED HD Smart Fire TV in living area

Optional Equipment

OPTIONAL EQUIPMENT INSTALLED ON THIS VEHICLE BY MANUFACTURER

Base price	148,543.00
Modern Farmhouse	443.00
Diamond Ice Graphics Package	n/c
USA Standards	n/c
Customer Value Package	6,000.00
Dual ACs	1,193.00
Hydraulic Auto Leveling Jacks	3,893.00
190W Roof Mounted Solar Panel w/2nd House Battery	393.00
Standard House Battery	n/c
Sun Folding Windshield Shade	488.00
Dinette	n/c

UNIT TOTAL **161,553.00**

DEALER INSTALLED OPTIONS

DIMENSIONS

Exterior height:.....138.00"
 Exterior width:.....84.00"

CAPACITIES

Fresh water tank (gals.):...43.50
 Gray water tank (gals.):...40.00
 Black water/toilet tank (gals.):...31.00
 Propane (lbs.):...41
 Propane (gals.):...9
 Water heater (gals.):...6.00

TIRES

Tire size (front):.....LT225/75R16E
 Tire size (mid):.....
 Tire size (rear):.....LT225/75R16E

Some dimensions may be rounded and may vary from the actual dimensions
 Weights may be estimated calculations and may vary from the actual weight - refer to the vehicle weight labels for actual weights
 Floorplans, features and specifications are subject to change without notice.