



Greyhawk



Serial #: 1UJLJCBR6N1MV4083
 Model: 29MV GREYHAWK MHC
 VIN#: 1FDXE4FN9NDC16483
 Model Year: 2022 Dealer Name: NATIONAL INDOOR RV CENTERS
 11280 N SOLAR CANYON WAY
 SURPRISE, AZ 85379
 USA

5359

Standard Equipment

THE FOLLOWING ITEMS ARE STANDARD ON THIS MODEL AT NO EXTRA CHARGE

- EXTERIOR**
- Ford® E-450 chassis
 - GVWR- 14,500 lb.
 - GCWR- 22,000 lb.
 - 7.3L 350 HP engine with 466 lb.-torque
 - 6-speed TorqShift® series transmission with overdrive
 - 210-amp alternator
 - Elevated highway tires- LT225/75R16
 - Tire pressure monitoring system (TPMS)
 - Power anti-lock brakes with power steering
 - 7,500 lb. hitch with 750 lb. tongue capacity and 7-pin plug
 - 12V chassis battery
 - 55 gal. fuel tank
 - Chrome, heated, remote-controlled, side-view mirrors
 - Stronghold VBL™ roof, floor and sidewalls
 - Bead-foam insulation (R-24 max roof, R-9 max floor, R-5 max walls)
 - One-piece, seamless, fiberglass front cap
 - One-piece, seamless, crowned fiberglass roof
 - Fiberglass running boards and transition wings
 - Fiberglass exterior walls with vinyl graphics
 - Remalee keyless cab entry
 - Entrance door with industry's largest travel-view window
 - Electric-powered entrance step with integrated house battery compartment
 - 12V house battery
 - 190W solar panel with dual controller with second house battery
 - (2) high-output, marine-grade exterior speakers
 - Slide-out cover awnings
 - Lockable storage compartments with slam latches
 - Heated holding tanks (12V pads)
 - 18.5 gal. propane tank (56 lb.)
 - LP quick-connect hookup
 - Exterior utility center
 - Winterization drain system
 - Black tank flush
 - Outside shower
 - 12V demand water pump
 - Onan® 4,000-watt MicroQuiet™ generator with auto-changeover
 - Transfer switch with reverse polarity protection
 - 30-amp electrical service
 - Flush-mount LED marker lights
 - Third brake light
 - Porch light
 - Roof ladder (N/A 30Z)
 - 4 in. bumper-tube with sewer hose storage

- INTERIOR**
- Swivel driver and passenger seats (N/A 30X)
 - Driver and passenger airbags
 - Power windows and door locks
 - Tilt steering wheel
 - A/C and cruise control
 - Auxiliary start switch
 - Privacy curtains for cab area
 - 84 in. interior ceiling height with padded vinyl ceiling
 - High-intensity, recessed LED ceiling lights
 - LED-lit, hardwood fascia
 - Hardwood cabinet doors and drawers
 - Ball-bearing drawer guides
 - Jayco-exclusive, easy-operation legless dinette table
 - 2-point lap safety belts in all designated seating locations
 - Interior command center
 - Blackout night roller shades
 - 31,000 BTU auto-ignition furnace
 - 6 gal. gas/electric DSI auto-ignition water heater
 - Prep for satellite dish
 - Cable TV hookup with RG-6 coax
 - Wireguard 2.0 WiFi4G antenna
 - 8 cu. ft. flush-mount, double-door refrigerator
 - Furrion® all-in-one cooktop and oven
 - Residential-size microwave
 - Integrated stainless steel kitchen sink with cutting board and grate sink cover
 - LED-lit, pressed countertops
 - Flip-up countertop extension (select models)
 - Decorative kitchen backsplash
 - Pop-up charging station with 110 outlet and USB plugs
 - Water filtration system
 - Shower with decorative surround, glass door, skylight and light
 - Stainless steel bathroom sink
 - Toilet with foot flush
 - Powered roof vent in bathroom with wall switch
 - Walk-around Queen-size bed with bedspread and nightstands Under-bed storage (select models)
 - Large wardrobes
 - Overhead bunk with 750 lb. capacity and safety net
 - Bunks with industry-exclusive 300 lb. capacity each (31F)
 - Smoke alarm
 - Carbon monoxide detector

- CUSTOMER VALUE PACKAGE**
- JRIE® PLUS: Computer-balanced driveshaft, Konig® FSD shocks, heavy-duty rear stabilizer bar, standard front stabilizer bar, Hellwig® helper springs, rubber isolation mounts
 - Automatic hydraulic leveling jacks
 - Frameless windows
 - Electric patio awning with LED lights
 - 15,000 BTU A/C with heat pump
 - 1,000-watt inverter
 - Sony® infotainment center with Apple® CarPlay™ and Android Auto™
 - Backup and side-view cameras
 - LED HD Smart Fire TV in living area
 - LED TV in bedroom

Optional Equipment

OPTIONAL EQUIPMENT INSTALLED ON THIS VEHICLE BY MANUFACTURER

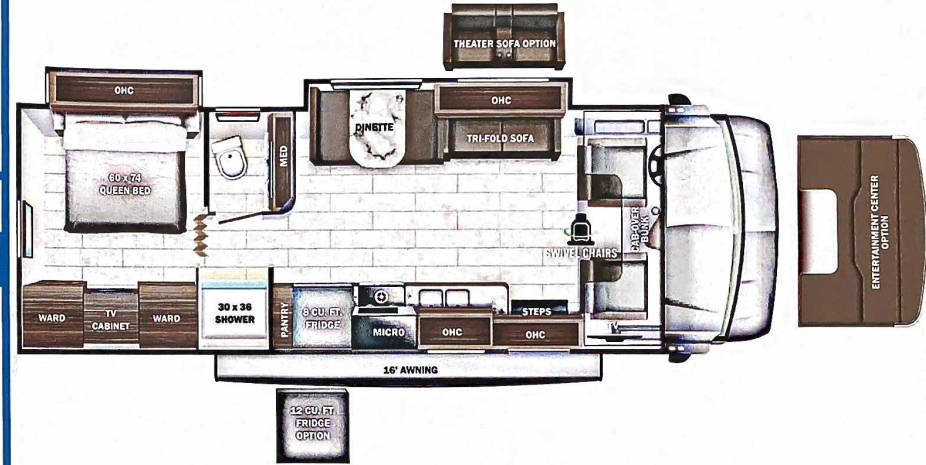
Base price	132,293.00
Modern Farmhouse	443.00
Platinum Graphics Package	n/c
USA Standards	n/c
22 FD E45 14500 158"	n/c
7.3L WHITE NC10	n/c
Customer Value Package	9,000.00
Dual ACs	1,193.00
8 Cu. Ft. Refrigerator	n/c
Steel Rims	n/c
Standard House Battery	n/c
Interior Sun Shade	
Windshield	
Theater Seating Sofa	443.00
Front Entertainment Center with TV	375.00
	750.00

UNIT TOTAL 144,497.00

DEALER INSTALLED OPTIONS

Manufacturer's Suggested Retail Price \$144,497.00

TOTAL AMOUNT DOES NOT INCLUDE STATE AND LOCAL TAXES OR LICENSE FEES. THE PRICE SHOWN ABOVE MAY OR MAY NOT BE REPRESENTATIVE OF THE ACTUAL SELLING PRICE OF SIMILAR RECREATIONAL VEHICLES IN YOUR AREA.



DIMENSIONS

Exterior height:.....140.00"

Exterior width:.....100.00"

CAPACITIES

Fresh water tank (gals.):...47.00
 Gray water tank (gals.):...41.00
 Black water/toilet tank (gals.):...32.00
 Propane (lbs.):...56
 Propane (gals.):...13
 Water heater (gals.):...6.00

TIRES

Tire size (front):.....LT225/75R16E
 Tire size (mid):.....
 Tire size (rear):.....LT225/75R16E



Some dimensions may be rounded and may vary from the actual dimensions
 Weights may be estimated calculations and may vary from the actual weight
 - refer to the vehicle weight labels for actual weights***
 Floorplans, features and specifications are subject to change without notice.