



Seneca

#5194



Serial #: 1UJNJCBU7M1HM4069  
Model: 37M SENECA MHC  
VIN#: 4UZADVFC4MCMS1825  
Model Year: 2021 Dealer Name: NATIONAL INDOOR RV CENTERS  
11280 N SOLAR CONYON WAY  
SURPRISE, AZ 85379  
USA

## Standard Equipment

THE FOLLOWING ITEMS ARE STANDARD ON THIS MODEL  
AT NO EXTRA CHARGE

**Exterior**

- Freightliner® S2RV chassis
- Cummins® ISB 6.7L 360 HP diesel engine with 800 ft.-lb. torque
- Allison® 3000 MH automatic transmission
- 185-amp alternator
- G-rated highway tires- 275/80R22.5
- Alcoa® aluminum rims
- Engine exhaust brake
- 12,000-lb. rear hitch receiver with 7-pin plug
- Dual 12V chassis batteries
- 100 gal. fuel tank
- 10 gal. DEF tank
- Stronghold® VBL™ Vacuum-Bond laminated roof, floor and sidewalls
- Premium Sikkens full body paint
- Bead-foam insulation (R-24 max roof, R-9 max floor and R-8 max walls)
- One-piece, seamless, crowned fiberglass roof
- Entrance door with industry's largest travel view window
- Electric-powered entrance step
- Slideout cover awnings
- Exterior entertainment center with outside speakers, LED TV mounted on swivel bracket and single-disc DVD/CD/AM/FM radio
- Carpeted, full pass-through storage compartments with lockable slam latch doors
- Onan® 8,000-watt Quiet Diesel generator and auto-gent start
- 24.5 gal. propane tank (83 lb.)
- Black tank flush
- Outside shower
- Automatic hydraulic leveling jacks
- Winegard® In-motion satellite dish
- Thetford® Sani-Con Turbo Macerator system
- LP quick-connect hookup
- Exterior utility center
- Winterization drain system
- 12V demand water pump
- (4) 6V AGM (220Ah) house batteries on slideout tray
- Solar prep
- Flush-mount LED marker lights
- Third brake light
- Porch light

**Interior**

- JAYCOMMAND® powered by Firefly
- 84 in. interior ceiling height with padded vinyl ceiling
- Ball-bearing drawer guides
- Raised-panel, hardwood cabinetry throughout
- Deluxe hidden cabinet hinges
- LED lit solid surface kitchen countertops with integrated stainless steel sink and sink covers
- Furrion® stainless recessed gas cooktop
- 12,000-lb. rear hitch receiver with 7-pin plug
- Flip-up countertop extension (select models)
- Water filtration system
- Jayco-exclusive easy operation legless dinette table
- 2-point lap safety belts in all designated seating locations
- Tile like vinyl flooring
- Systems monitor panel
- High-intensity recessed LED ceiling lights
- 34,000 BTU auto-ignition furnace
- Furrion® electric fireplace (N/A 37TS)
- Blu-Ray™ with HDMI® connections to all televisions
- Cable TV hookup with RG-6 coax and video selector switch
- LED lit stainless steel bathroom sink
- Porcelain toilet with foot flush
- One-piece, fiberglass shower with glass door, skylight and light
- Powered roof vent in bathroom with wall switch
- Walk-around King-sized bed with bedspread and nightstands
- Under-bed storage, bed lifts easily on gas struts (select models)
- LED TV in bedroom
- Overhead bunk with 750 lb. capacity
- Bunks with industry-exclusive 300 lb. capacity each (37FS)
- Smoke alarm
- Carbon monoxide detector
- Deluxe heated, remote-controlled, sideview mirrors
- Power driver and passenger seats
- Power windows and door locks
- Tilt steering wheel
- A/C and cruise control
- Auxiliary start switch
- Privacy curtains for cab area

**Customer Value Package**

- JRIIDE® PREMIUM: Rear air suspension, heavy-duty rear stabilizer bar, full air brakes, SACHS shocks
- Sony® infotainment center Apple CarPlay® and Android Auto™
- One-piece, seamless, fiberglass front and rear caps
- Automotive-bonded, panoramic window in front cap with power shade
- Backup and side-view cameras
- Dual-pane, tinted, safety-glass windows
- 15,000 BTU A/C unit with heat pump and second 13,500 BTU A/C unit
- 2,000-watt pure sine wave inverter
- Power cord reel with 50-amp service
- Electric patio awning with LED lights
- 21 cu.ft. residential refrigerator with ice and water in door
- Convection microwave

## Optional Equipment

OPTIONAL EQUIPMENT INSTALLED ON THIS VEHICLE  
BY MANUFACTURER

Base price	268,350.00
Providence	n/c
Mahogany Paint Package	n/c
USA Standards	n/c
21 FR S2RV 31000 279"	n/c
360 MXX3	6,750.00
Customer Value Package	n/c
Residential Refrigerator	n/c
No Washer/Dryer	n/c
IN Motion DISH Satellite System	n/c
Power Theater Seating	n/c
Booth Dinette	n/c

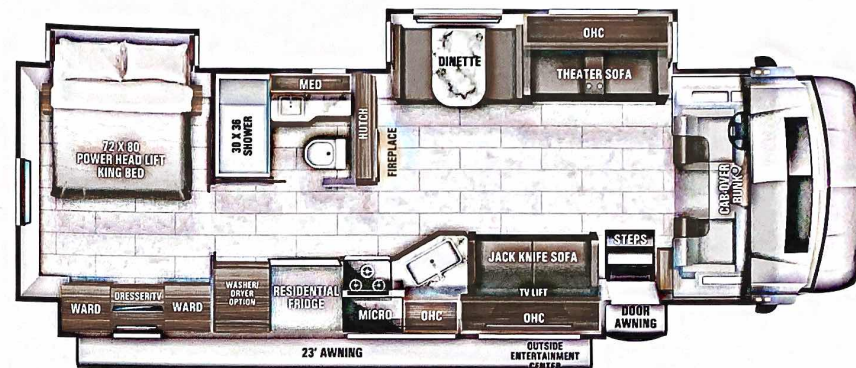
UNIT TOTAL

275,100.00

DEALER INSTALLED OPTIONS

Manufacturer's Suggested Retail Price \$275,100.00

TOTAL AMOUNT DOES NOT INCLUDE STATE AND LOCAL TAXES OR LICENSE FEES. THE PRICE SHOWN ABOVE MAY OR MAY NOT BE REPRESENTATIVE OF THE ACTUAL SELLING PRICE OF SIMILAR RECREATIONAL VEHICLES IN YOUR AREA.



## DIMENSIONS

Exterior height:.....160.00"  
Exterior width:.....101.00"

## CAPACITIES

Fresh water tank (gals.)...72.00  
Gray water tank (gals.)...81.00  
Black water/toilet tank (gals.)...50.00  
Propane (lbs.)...83  
Propane (gals.)...19  
Water heater (gals.)...10.00

## TIRES

Tire size (front):.....275/80R22.5G  
Tire size (mid):.....  
Tire size (rear):.....275/80R22.5G

\*\*\*Some dimensions may be rounded and may vary from the actual dimensions\*\*\*  
\*\*\*Weights may be estimated calculations and may vary from the actual weight  
- refer to the vehicle weight labels for actual weights\*\*\*  
Floorplans, features and specifications are subject to change without notice.

**2+3**  
YEAR YEAR  
LIMITED STRUCTURAL  
WARRANTY