



# ENTEGRA COACH®

## Vision XL



Serial #: 1J5MEABU9V1UC8092  
 Model: 36C VISION XL MHA  
 VIN#: 1F66FSDN3T0A01324  
 Model Year: 2027 Dealer Name: NATIONAL INDOOR RV CENTERS  
 4640 NEXUS WAY  
 NORTH LAS VEGAS, NV 89115  
 USA

### Standard Equipment

#### THE FOLLOWING ITEMS ARE STANDARD ON THIS MODEL

- STANDARD EXTERIOR EQUIPMENT**
- GVWR - 22,000 lb. (C48, 34G), 24,000 lb. (36A, 36C)
  - GVWR - 26,000 lb. (C48, 34G), 30,000 lb. (36A, 36C)
  - 7.3L V4 335 HP engine with 48R II 8- tone 6-speed automatic TorqShift® transmission
  - Catalytic converter heat detector
  - 7 pin pig tail rear hitch receiver with dual connector and TuffShel® vacuum bonded laminated roof, floor and sidewalls
  - Stainless stainless fiberglass front and rear cap
  - One-piece stainless, covered fiberglass roof
  - Travel-view entry door
  - Roof ladder
  - Roof ladder Restler Antenna
  - LP quick-connect hookup
  - Overhead storage
  - Centralized water filtration system
  - Hydraulic leveling jacks
  - Electric patio leveling with LED lights
  - 50-amp electrical service
- CUSTOMER VALUE PACKAGE**
- Sales 1 Plus steering stabilizer, Korner FDS shocks, variable-rate front and rear ride bumpers, heavy-duty front and rear stabilizer bars, Z2 5th 15,000 BTU A/C unit with heat pump and second 13,500 BTU A/C unit
  - 1200W inverter
  - 1.200W inverter
  - Tankless water heater
  - Sony® entertainment center with Apple CarPlay® and Backup and side-view camera
  - Smart TV in living area
  - JBL® Audio system
  - SCOW® seat (with dual controller)
  - Select flooring(s)

### Optional Equipment

#### OPTIONAL EQUIPMENT INSTALLED ON THIS VEHICLE BY MANUFACTURER

- STANDARD INTERIOR EQUIPMENT**
- Power front privacy shades with manual side privacy shades
  - Frigidaire Microwave system
  - Herculon® cabinet doors and drawer fronts
  - 20,000 BTU A/C unit (C48, 34G, 36C)
  - 20,000 BTU A/C unit (C48, 34G, 36C)
  - Electric fireplace (C48, 34G, 36C)
  - Legless driver table
  - Legless passenger table
  - Recreational entry door
  - All-in-one cooking and oven
  - Residential-size microwave
  - 55" TV and wireless charging in nightstands
  - 3000W generator
  - Burns with 300 lb. capacity each
  - Smoke alarm
  - Carbon monoxide detector
  - Fire extinguisher
  - Integrated day/night cassette shades

Base price	248,018.00
COASTAL DECOR	593.00
TEXAS PAINT	17,993.00
USA STANDARDS	n/c
CUSTOMER VALUE PACKAGE	11,250.00
RESIDENTIAL REFRIGERATOR	n/c
NO WASHBOARD/YEER	n/c
SOFA - TRADITIONAL	n/c
FRONT OVERHEAD BUNK	3,293.00

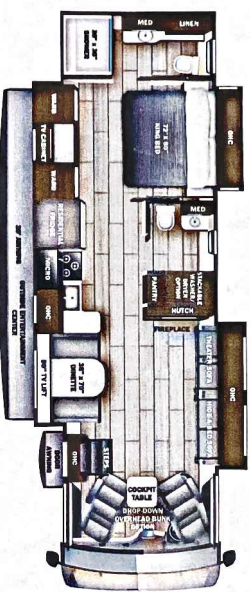
UNIT TOTAL **281,147.00**

DEALER INSTALLED OPTIONS:

### Manufacturer's Suggested Retail Price

\$281,147.00

TOTAL AMOUNT DOES NOT INCLUDE STATE AND LOCAL TAXES OR LICENSE FEES. THE PRICE SHOWN ABOVE MAY OR MAY NOT BE REPRESENTATIVE OF THE ACTUAL SELLING PRICE OF SIMILAR RECREATIONAL VEHICLES IN YOUR AREA.



**DIMENSIONS**

Exterior height:.....154.00\*  
 Exterior width:.....101.00\*

**CAPACITIES**

Fresh water tank (gals.):.....72.00  
 Gray water tank (gals.):.....72.00  
 Black water/coilet tank (gals.):.....72.00  
 Propane (lbs.):.....56  
 Propane (gals.):.....13  
 Water heater (gals.):.....0.00

**TIRES**

Tire size (front):.....255/80R22.5G  
 Tire size (mid):.....  
 Tire size (rear):.....255/80R22.5G

\*\*\*Some dimensions may be rounded and may vary from the actual dimensions\*\*\*  
 \*\*\*Weights may be estimated calculations and may vary from the actual weights\*\*\*  
 - refer to the vehicle weight labels for actual weights\*\*\*  
 Floorplans, features and specifications are subject to change without notice.

