



# Vision XL



Serial #: 1JSMEABU4V1UC8095  
 Model: 36C VISION XL MHA  
 VIN#: 1F66F5DN4T0A01378  
 Model Year: 2027 Dealer Name: NATIONAL INDOOR RV CENTERS  
 1350 HURRICANE SHOALS ROAD  
 LAWRENCEVILLE, GA 30043  
 USA

## Manufacturer's Suggested Retail Price

\$281,147.00

TOTAL AMOUNT DOES NOT INCLUDE STATE AND LOCAL TAXES OR LICENSE FEES. THE PRICE SHOWN ABOVE MAY OR MAY NOT BE REPRESENTATIVE OF THE ACTUAL SELLING PRICE OF SIMILAR RECREATIONAL VEHICLES IN YOUR AREA.

### Standard Equipment

THE FOLLOWING ITEMS ARE STANDARD ON THIS MODEL

#### STANDARD EXTERIOR EQUIPMENT

- Ford® F53 chassis
- GVWR - 22,000 lb. (34B, 34G) 24,000 lb. (36A, 36C)
- GCWR - 26,000 lb. (34B, 34G), 30,000 lb. (36A, 36C)
- 7.3L V-8 335 HP engine with 468 ft.-lb. torque
- 6-speed automatic TorqShift® transmission
- Catalytic converter theft deterrent
- 5,000 lb. rear hitch receiver with dual connector and 7-pin plug
- TuffShell™ vacuum-bond laminated roof, floor and sidewalls
- One-piece, seamless fiberglass front and rear cap
- One-piece, seamless, crowned fiberglass roof
- Travel-view entry door
- Roof ladder
- TV and FM Booster Antenna
- (2) 6V AGM (220Ah) house batteries on slideout tray
- LP quick-connect hookup
- Heated holding tanks (12V pads)
- Outside shower
- Centralized water filtration system
- Hydraulic leveling jacks
- Electric patio awning with LED lights
- 7,000W generator with auto-gen start
- 50-amp electrical service

#### CUSTOMER VALUE PACKAGE

- E-Z Drive™: Computer-balanced driveshaft, Safe-T-Plus steering stabilizer, Koni® FDS shocks, variable-rate front and rear jounce bumpers, heavy-duty front and rear stabilizer bars, 22.5in Michelin® tires
- 15,000 BTU A/C unit with heat pump and second 13,500 BTU A/C unit
- JBL® Exterior speakers, with Smart TV and Bluetooth® receiver
- 1,200W inverter
- Tankless water heater
- Sony® infotainment center with Apple CarPlay® and Android Auto™
- Backup and side-view cameras
- Smart TV in living area
- JBL® Audio system
- 200W solar panel with dual controller
- Slideout awning(s)

#### STANDARD INTERIOR EQUIPMENT

- 120 in. panoramic windshield
- Power front privacy shade with manual side privacy shades
- Firefly Multiplex system
- Hardwood cabinet doors and drawer fronts
- 30,000 BTU auto-ignition ducted furnace (31UL, 34B, 34G)
- (2) 30,000 BTU auto-ignition ducted furnaces (36A, 36C)
- Electric fireplace (34B, 34G, 36C)
- Legless dinette table
- 2-point lap safety belts in all designated seating locations
- Residential refrigerator
- All-in-one cooktop and oven
- Residential-size microwave
- USB port and wireless charging in nightstands
- Smart TV in bedroom
- Bunks with 300 lb. capacity each
- Smoke alarm
- Carbon monoxide detector
- Fire extinguisher
- Integrated day/night cassette shades

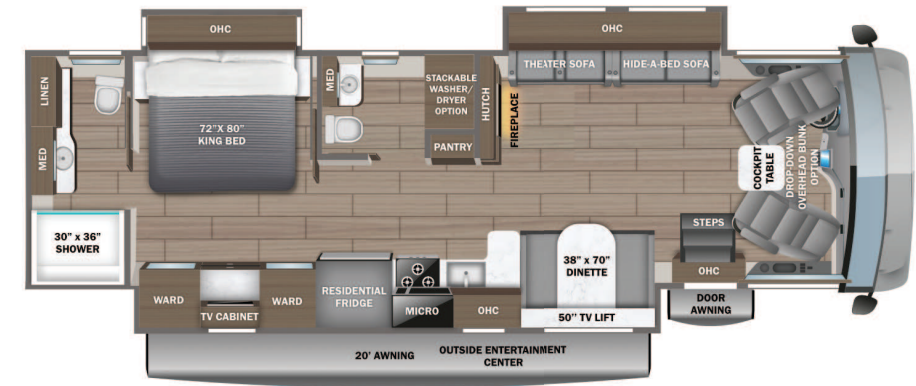
### Optional Equipment

OPTIONAL EQUIPMENT INSTALLED ON THIS VEHICLE BY MANUFACTURER

Base price	248,018.00
COASTAL DECOR	593.00
ALASKA PAINT	17,993.00
USA STANDARDS	n/c
CUSTOMER VALUE PACKAGE	11,250.00
RESIDENTIAL REFRIGERATOR	n/c
NO WASHER/DRYER	n/c
SOFA - TRADITIONAL	n/c
FRONT OVERHEAD BUNK	3,293.00

UNIT TOTAL **281,147.00**

DEALER INSTALLED OPTIONS



#### DIMENSIONS

Exterior height:.....154.00"  
 Exterior width:.....101.00"

#### CAPACITIES

Fresh water tank (gals.):...72.00  
 Gray water tank (gals.):...72.00  
 Black water/toilet tank (gals):.....72.00  
 Propane (lbs.):.....56  
 Propane (gals.):.....13  
 Water heater (gals.):.....0.00

#### TIRES

Tire size (front):.....255/80R22.5G  
 Tire size (mid):.....  
 Tire size (rear):.....255/80R22.5G

\*\*\*Some dimensions may be rounded and may vary from the actual dimensions\*\*\*  
 \*\*\*Weights may be estimated calculations and may vary from the actual weight  
 - refer to the vehicle weight labels for actual weights\*\*\*  
 Floorplans, features and specifications are subject to change without notice.



Document Identifier: MSPP SHEET