



Vision XL

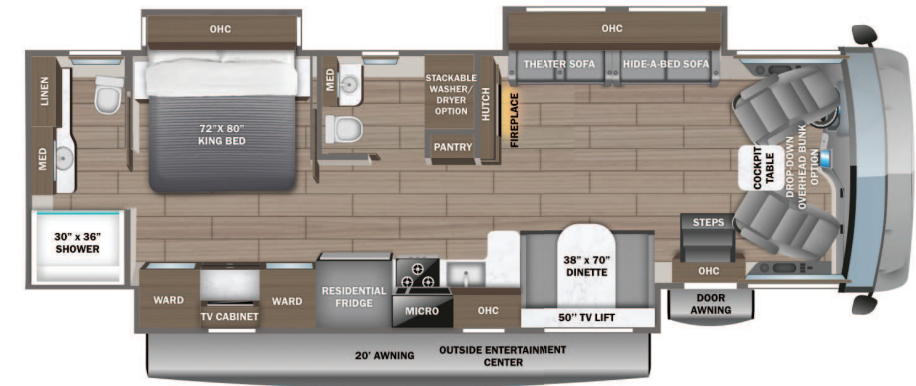


Serial #: 1JSMEABU4V1UC8050
 Model: 36C VISION XL MHA
 VIN#: 1F66F5DN5S0A06720
 Model Year: 2027 Dealer Name: National Indoor RV Centers
 1000 Aubrey Dr.
 Lebanon, TN 37090
 USA

Manufacturer's Suggested Retail Price

\$284,138.00

TOTAL AMOUNT DOES NOT INCLUDE STATE AND LOCAL TAXES OR LICENSE FEES. THE PRICE SHOWN ABOVE MAY OR MAY NOT BE REPRESENTATIVE OF THE ACTUAL SELLING PRICE OF SIMILAR RECREATIONAL VEHICLES IN YOUR AREA.



Standard Equipment

THE FOLLOWING ITEMS ARE STANDARD ON THIS MODEL

- STANDARD EXTERIOR EQUIPMENT**
- Ford® F53 chassis
 - GVWR - 22,000 lb. (34B, 34G) 24,000 lb. (36A, 36C)
 - GCWR - 26,000 lb. (34B, 34G), 30,000 lb. (36A, 36C)
 - 7.3L V-8 335 HP engine with 468 ft.-lb. torque
 - 6-speed automatic TorqShift® transmission
 - Catalytic converter theft deterrent
 - 5,000 lb. rear hitch receiver with dual connector and 7-pin plug
 - TuffShell™ vacuum-bond laminated roof, floor and sidewalls
 - One-piece, seamless fiberglass front and rear cap
 - One-piece, seamless, crowned fiberglass roof
 - Travel-view entry door
 - Roof ladder
 - TV and FM Booster Antenna
 - (2) 6V AGM (220Ah) house batteries on slideout tray
 - LP quick-connect hookup
 - Heated holding tanks (12V pads)
 - Outside shower
 - Centralized water filtration system
 - Hydraulic leveling jacks
 - Electric patio awning with LED lights
 - 7,000W generator with auto-gen start
 - 50-amp electrical service

- CUSTOMER VALUE PACKAGE**
- E-Z Drive™: Computer-balanced driveshaft, Safe-T-Plus steering stabilizer, Koni® FDS shocks, variable-rate front and rear jounce bumpers, heavy-duty front and rear stabilizer bars, 22.5in Michelin® tires
 - 15,000 BTU A/C unit with heat pump and second 13,500 BTU A/C unit
 - JBL® Exterior speakers, with Smart TV and Bluetooth® receiver
 - 1,200W inverter
 - Tankless water heater
 - Sony® infotainment center with Apple CarPlay® and Android Auto™
 - Backup and side-view cameras
 - Smart TV in living area
 - JBL® Audio system
 - 200W solar panel with dual controller
 - Slideout awning(s)

- STANDARD INTERIOR EQUIPMENT**
- 120 in. panoramic windshield
 - Power front privacy shade with manual side privacy shades
 - Firefly Multiplex system
 - Hardwood cabinet doors and drawer fronts
 - 30,000 BTU auto-ignition ducted furnace (31UL, 34B, 34G)
 - (2) 30,000 BTU auto-ignition ducted furnaces (36A, 36C)
 - Electric fireplace (34B, 34G, 36C)
 - Legless dinette table
 - 2-point lap safety belts in all designated seating locations
 - Residential refrigerator
 - All-in-one cooktop and oven
 - Residential-size microwave
 - USB port and wireless charging in nightstands
 - Smart TV in bedroom
 - Bunks with 300 lb. capacity each
 - Smoke alarm
 - Carbon monoxide detector
 - Fire extinguisher
 - Integrated day/night cassette shades

Optional Equipment

OPTIONAL EQUIPMENT INSTALLED ON THIS VEHICLE BY MANUFACTURER

| | |
|----------------------------|------------|
| Base price | 248,018.00 |
| STANDARDS(3UC PHOTO PROTO) | n/c |
| OPTIONS(3UC PHOTO PROTO) | 36,120.00 |

UNIT TOTAL **284,138.00**

DEALER INSTALLED OPTIONS

DIMENSIONS

Exterior height:.....154.00"
 Exterior width:.....101.00"

CAPACITIES

Fresh water tank (gals.):...72.00
 Gray water tank (gals.):...72.00
 Black water/toilet tank (gals):.....72.00
 Propane (lbs.):.....56
 Propane (gals.):.....13
 Water heater (gals.):.....0.00

TIRES

Tire size (front):.....255/80R22.5G
 Tire size (mid):.....
 Tire size (rear):.....255/80R22.5G

Some dimensions may be rounded and may vary from the actual dimensions
 Weights may be estimated calculations and may vary from the actual weight - refer to the vehicle weight labels for actual weights
 Floorplans, features and specifications are subject to change without notice.

