



ENTEGRA

COACH®

Cornerstone



Serial #: 1USMEACV9T16V8062
Model: 45V CORNERSTONE MHA
VIN#: 4UZECTFG8TCWR6497
Model Year: 2026 Dealer Name: NATIONAL INDOOR RV CENTERS

11280 N SOLAR CANYON WAY
SURPRISE, AZ 85379
USA

Standard Equipment

THE FOLLOWING ITEMS ARE STANDARD ON THIS MODEL

STANDARD EXTERIOR EQUIPMENT

- Spartan® X3 rated-rail chassis
- Cummins® 15 liter X15 turbocharged 605 HP engine with 1,950 lb. ft. torque at 1,150 RPM
- Allison® 4,000 MH 6-speed transmission
- Three-stage engine brake
- Collision avoidance system with collision warning, adaptive cruise control and electronic stability control
- 20,000 lb. rating front axle with independent front suspension, integrated anti-sway bar and custom-tuned shocks
- Dana® rear axle - 20,000 lb. rating
- Reyco® Granning® passive-steer lag axle with one-touch manual air dump - 14,000 lb. rating
- Michelin® 365/70R 22.5 in. tires (front) and 315/80R 22.5 in. tires (rear)
- Tire pressure monitoring system (TPMS) with temperature monitoring
- Automatic traction control
- Equalizer™ hydraulic automatic coach leveling compressor
- Valid™ TrueLine air leveling system with auxiliary air compressor
- 175 gal. fuel tank with dual fills
- 15 gal. DEF tank with dual fills
- 20,000 lb. hitch with 7-pin plug
- Aqua-Hot® heated basement storage
- Onan® 12,500W diesel generator, with automatic start, on powered slide-out tray
- Victron 3,000W pure sine wave inverter with LED screen
- (4) L16 AGM batteries (6V/390 amp hrs. ea.)
- (2) 200W solar panels
- 50 amp power cord on electric powered reel
- Bergstrom dual-zone HVAC system
- (3) 15,000 BTU A/C units with heat pumps and condensation drain system
- Aqua-Hot® 600D hydronic water and heating system with in-floor heat throughout and engine preheat
- Sani-Con® macerator holding tank dump system with power gate valves and manual backup
- Hot and cold water hook-up in front cap area with 30 ft. quick-disconnect hose
- Water softener prep in driver-side compartment
- Water hose with electric reel
- Dual roof-mounted Girard® Vision dual-pitched patio awnings with LED lights
- Girard® power entrance door awning with LED lights
- Girard® Ultra slideout awnings
- Girard® Ultra power window awnings
- Lit grab handle with doorbell and keypad system for keyless entry
- Exterior 43 in. Samsung® QLED 4K UHD Smart TV with tilt, swivel, and extend adjustment
- Exterior JBL® soundbar with USB port and receptacle
- Blind-spot monitoring indicators in chrome, heated, remote-control side-view mirrors
- Automatic LED high and low beam headlights
- Starlink satellite internet system
- Winegard® TRAVLER satellite dish DIRECTV®-standard with USA option
- Winegard® Rayzar Automatic powered TV antenna
- Winegard® Wi-Fi Ranger™ Wi-Fi extender
- (2) power slideout basement storage trays
- 2.8 cu. ft. exterior refrigerator/freezer on slideout tray
- Push-button, power-unlatching baggage doors with LED indicator light

STANDARD INTERIOR EQUIPMENT

- Valid™ 15 in. digital dash with quad core graphics processor, on-board diagnostics and ability to display traditional instrument cluster, 360° camera system or GPS navigation
- Delta Mobile Systems® aIDARStm 1X active 360° surround view system with 6 smart radar sensors and 6 HD cameras displayed on digital dash screen
- Valid™ infotainment system with 15 in. touchscreen, Sygic navigation, Bluetooth®, Sirius XM™ and AM/FM tuner, integrated camera control, house mode whole-coach audio distribution and integrated Vega touch coach control
- 4.3 in. infotainment control touchscreen in passenger console
- E-Z Steer™ adjustable power steering assist
- Leather steering wheel with integrated controls for screen selection, instrument cluster navigation, media source selection, cruise, wipers and Bluetooth® phone functionality
- Power tilt and telescoping steering column
- JBL® premium audio 11-speaker sound system with amplifier, speakers and DVC subwoofer in cab
- All-in-one automotive antenna for AM/FM/Sinus/GPS dash radio system
- Ultra-vision® one-piece wrap-around tinted windshield
- Rain-sensing windshield wipers
- 32 in. Samsung® QLED 4K UHD Smart TV in front overhead
- Heated and cooled leather driver and passenger seats with powered 6-way adjustment, lumbar, recline, footrest and massage functions
- Powered driver's window
- Firefly multiplex system with 10 in. VegaTouch touchscreen for complete integration of coach controls, with remote monitoring and control (mobile app available)
- Spyder 3.5 in. touchscreen switches throughout
- 50 in. Samsung® QLED 4K UHD Smart TV in living area
- Bose® sound bar with subwoofer and universal remote control in living area
- Premium Italian leather Villa furniture
- Powered solar dry and blackout night shades
- Portable Shair® vacuum cleaner and Dirt Devil central vacuum system with in-wall dust pan
- Hardwood cabinets and slits throughout
- Soft-close dovetail drawers
- Stainless steel residential refrigerator
- Induction cooktop with matching wood cover
- 1.7 cu ft. convection microwave with air fryer function
- Fisher & Paykel dishwasher
- 43 in. Samsung® Crystal UHD Smart TV in bedroom
- Bose® sound bar with universal remote control in bedroom
- Porcelain tile shower walls and floor with skylight and frameless glass shower door
- Teakwood shower seat
- Thetford® macerator toilet in main bath
- Thetford® macerator toilet in mid bath (45D, 45R, 45W)
- Thetford® toilet in mid bath (45B)
- Splendide stackable washer and dryer

Optional Equipment

OPTIONAL EQUIPMENT INSTALLED ON THIS VEHICLE
BY MANUFACTURER

Base price	996,480.00
BIANCO DECOR	n/c
AUBURN CABINETRY	30.00
EXCLUDE DOVE WHITE FRONT	n/c
OVERHEAD ACCENT WOOD	2,543.00
ONYX WHITE POLISHED TILE	n/c
COUNTERTOP	30.00
SILKY BLUE II PAINT	n/c
USA STANDARDS	n/c
26 FR XCP 54000 320° 605	n/c
TAG 2024EPA TF109	n/c
DISHWASHER	n/c
12.5K GENERATOR	n/c
GARMIN NAVIGATION SYSTEM	1,493.00
NON-BLACKOUT	n/c
TRAVLER DIRECT TV	n/c
SATELLITE DISH	n/c
STARLINK SATELLITE	n/c
INTERNET SERVICE	n/c
AGM BATTERY -	n/c
FREIGHTLINER	n/c
FREE STANDING TABLE WITH	n/c
4 CHAIRS	n/c
THEATER SEATING SOFA D/S	n/c
MEDIA CENTER WITH SHELF	743.00
KING INSTANT COMFORT	n/c
MATTRESS	n/c
HEADBOARD,FRAME WITH	n/c
INSERT	n/c
DOUBLE LAV SINK IN MAIN	n/c
BATHROOM	893.00
INS SPECIAL COUNTERTOP	n/c
AND BATH BACKSPLASH	2,280.00

UNIT TOTAL

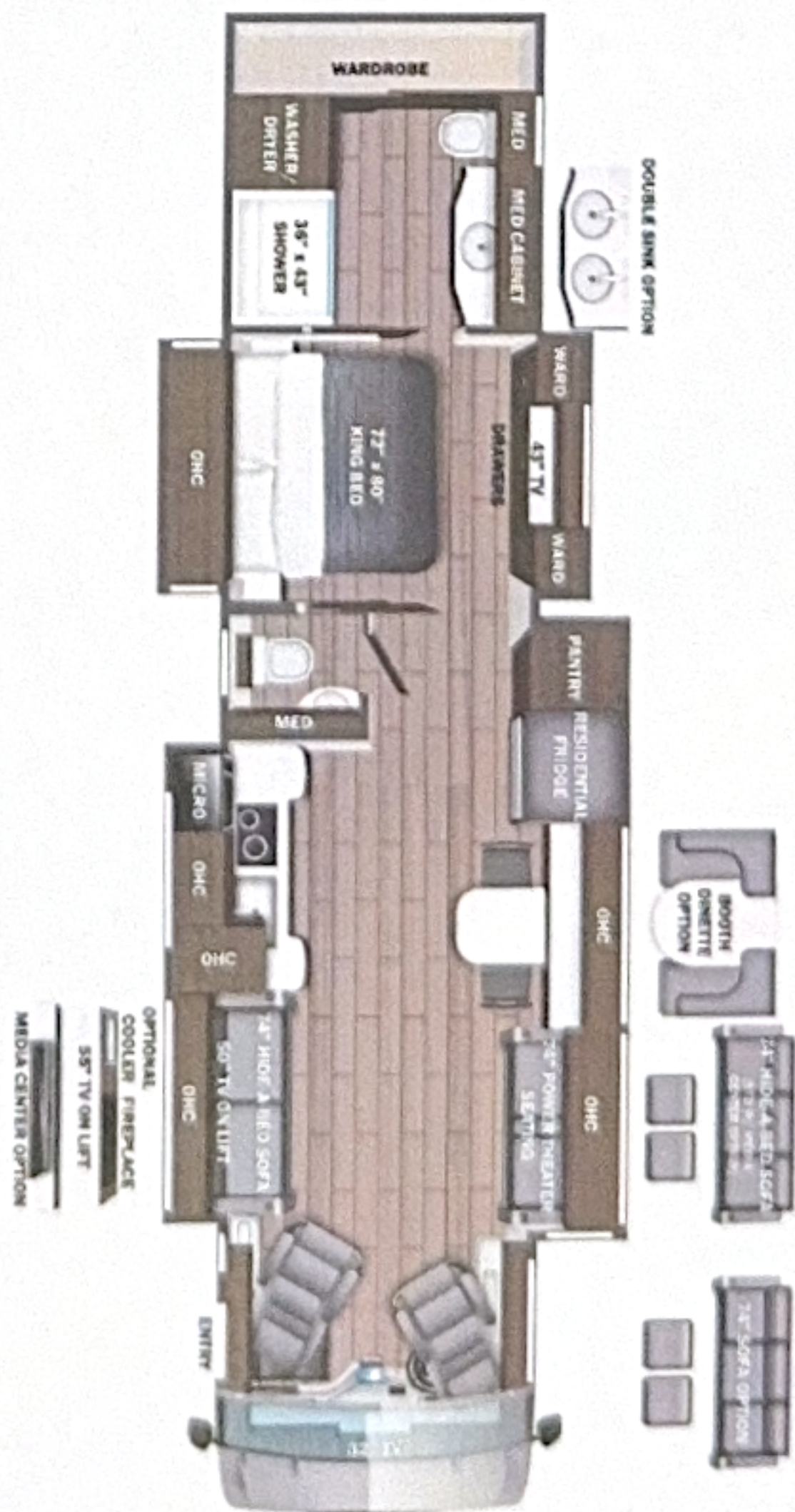
1,004,492.00

DEALER INSTALLED OPTIONS

Manufacturer's Suggested Retail Price

\$1,004,492.00

TOTAL AMOUNT DOES NOT INCLUDE STATE AND LOCAL TAXES OR LICENSE FEES. THE PRICE SHOWN ABOVE MAY OR MAY NOT BE REPRESENTATIVE OF THE ACTUAL SELLING PRICE OF SIMILAR RECREATIONAL VEHICLES IN YOUR AREA.



DIMENSIONS

Exterior height:.....152.00"
Exterior width:.....101.00"

CAPACITIES

Fresh water tank (gals.):...100.00
Gray water tank (gals.):....62.00
Black water/toilet tank (gals.):.....41.00
Propane (lbs.):.....0
Propane (gals.):.....0
Water heater (gals.):.....0.00

TIRES

Tire size (front) :.....365/70R22.5
Tire size (mid) :.....315/80R22.5
Tire size (rear) :.....315/80R22.5

***Some dimensions may be rounded and may vary from the actual dimensions ***
***Weights may be estimated calculations and may vary from the actual weight
- refer to the vehicle weight labels for actual weights ***
Floorplans, features and specifications are subject to change without notice.

