

Emblem



Serial #: 1JSMEABU5T1DH8050  
Model: 36H EMBLEM MHA  
VIN#: 1F66F5DN0R0A04240  
Model Year: 2026 Dealer Name: National Indoor RV Centers  
1000 Aubrey Dr.  
Lebanon, TN 37090  
USA



Standard Equipment

Optional Equipment

THE FOLLOWING ITEMS ARE STANDARD ON THIS MODEL

OPTIONAL EQUIPMENT INSTALLED ON THIS VEHICLE BY MANUFACTURER

STANDARD EXTERIOR EQUIPMENT

- Ford® F53 chassis
- GVWR- 24,000 lb.
- GCWR- 30,000 lb.
- 7.3L V-8 335 HP engine with 468 ft.-lb. torque
- 6-speed automatic TorqShift® transmission with overdrive and tow haul mode
- 210-amp alternator
- Catalytic converter theft deterrent
- G-rated highway tires - 255/80R22.5
- Front and rear disc, 4-wheel anti-lock brakes
- 5,000 lb. rear hitch receiver with dual connector and 7-pin plug
- 12V chassis battery
- 80 gal. fuel tank
- TuffShell™ vacuum-bond laminated roof, floor and sidewalls
- Bead-foam insulation (R-24 max roof, R-9 max floor, R-8 max walls)
- One-piece, seamless, crowned fiberglass roof
- One-piece, seamless fiberglass front and rear caps
- Premium Sikkens full-body paint
- Entrance door with industry's largest travel-view window
- Electric-powered entrance steps
- Lockable pass-through storage compartments with slam latches
- Thetford® Sani-Con® Turbo macerator system
- LED headlights
- Third brake light
- Roof ladder
- Prep for satellite dish
- Cable TV hookup with RG-6 coax
- Winegard 2.0 Wi-Fi/4G antenna
- 200W solar panel with dual controller
- (2) 6V AGM (220Ah) house batteries on slideout tray
- Transfer switch with reverse polarity protection
- 24.5 gal. propane tank (83 lb.)
- LP quick-connect hookup
- Exterior utility center
- Winterization drain system
- Black tank flush
- Outside shower
- 12V demand water pump
- Water filtration system
- CUSTOMER VALUE PACKAGE
  - E-Z Drive™ Elite: Computer-balanced driveshaft, Safe-T-Plus steering stabilizer, Koni® shocks, variable-rate front and rear jounce bumpers, heavy-duty front and rear stabilizer bars, 22.5 in. Michelin® tires
  - Automatic hydraulic leveling jacks
  - Lippert™ 4000 series frameless bonded windows
  - 15,000 BTU A/C unit with heat pump and second 13,500 BTU A/C unit
  - Exterior entertainment center with JBL® outside speakers and LED HD Smart TV mounted on swivel bracket
  - Electric patio awning with LED lights
  - Slideout awning(s)
  - 5,500W generator with auto-gen start
  - 2,000W inverter
  - 50-amp electrical service
  - 10 gal. gas/electric water heater
  - Sony® infotainment center with Apple CarPlay® and Android Auto™
  - Backup and side-view cameras
  - Removable driver/passenger cockpit table
  - LED-lit, solid-surface kitchen countertops with recessed stainless steel sink and sink covers
  - LED HD Smart TV in living area
  - Integrated day/night cassette shades

STANDARD INTERIOR EQUIPMENT

- 120 in. panoramic windshield
- 6-way power and swivel driver/passenger seats
- Soft-touch, vinyl-wrapped automotive dash
- Tilt steering wheel
- Cruise control
- Hill start assist
- Electronic stability control
- Traction control
- Auxiliary start
- Power front privacy shade with manual side privacy shades
- Firefly Multiplex system - wall-mounted touchscreen and mobile app for total coach control
- 84 in. interior ceiling height with padded vinyl ceiling
- High-intensity recessed LED ceiling lights
- Vinyl plank flooring
- LED-lit hardwood fascia
- Hardwood cabinet doors and drawer fronts
- Soft-close cabinet doors and drawers
- Deluxe hidden cabinet hinges
- Ball-bearing drawer guides
- 30,000 BTU auto-ignition ducted furnace
- Electric fireplace
- Entegra-exclusive, easy-operation legless dinette table
- 2-point lap safety belts in all designated seating locations
- Car seat tethers (select floorplans)
- JBL® audio system
- Wood-framed kitchen window
- Residential refrigerator
- 2-burner induction cooktop
- Residential-size convection microwave oven
- Walk-around, king-size bed with bedspread and nightstands
- USB port and wireless charging in nightstands
- Under-bed storage (select models)
- LED HD Smart TV in bedroom
- Large wardrobes
- Bunks with industry-exclusive, 300 lb. capacity each (36B)
- Shower with decorative surround, glass door, skylight and light
- Recessed, LED-lit, stainless steel bathroom sink
- Porcelain toilet with foot flush
- Powered roof vent in bathroom with wall switch
- Smoke alarm
- Carbon monoxide detector
- Fire extinguisher

Base price	256,268.00
STANDARDS(3DH)	n/c
OAKRIDGE DECOR(3DH)	n/c
APPALACHIA PAINT(3DH)	30.00
USA STANDARDS(3DH)	n/c
24 FD F53 24000 252"	
7.3L RD05(3DH)	n/c
CUSTOMER VALUE PACKAGE(3DH)	11,250.00
REDIDENTIAL REFRIGERATOR(3DH)	n/c
WASHER/DRYER STACK(3DH)	2,393.00
SOFA(3DH)	n/c
FRONT OVHD BUNK(3DH)	3,293.00

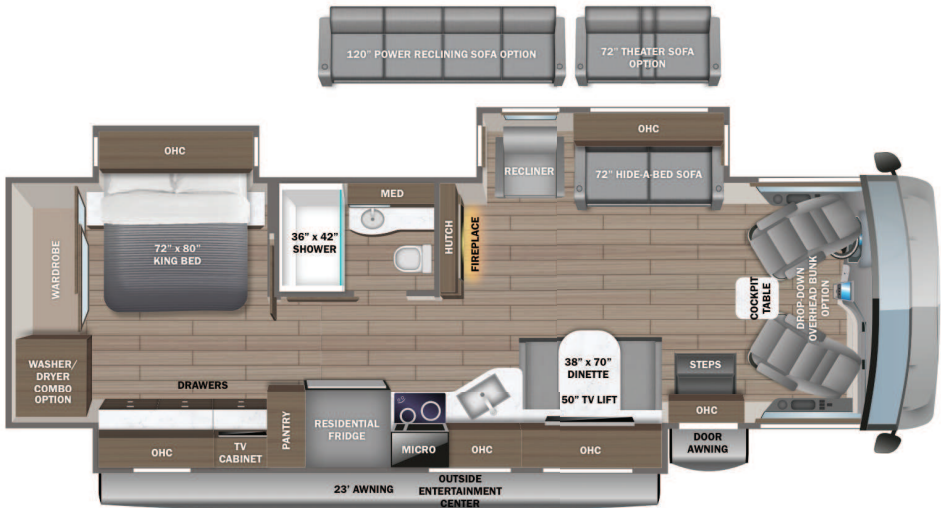
UNIT TOTAL 273,234.00

DEALER INSTALLED OPTIONS

Manufacturer's Suggested Retail Price

\$273,234.00

TOTAL AMOUNT DOES NOT INCLUDE STATE AND LOCAL TAXES OR LICENSE FEES. THE PRICE SHOWN ABOVE MAY OR MAY NOT BE REPRESENTATIVE OF THE ACTUAL SELLING PRICE OF SIMILAR RECREATIONAL VEHICLES IN YOUR AREA.



DIMENSIONS

Exterior height:.....154.00"  
Exterior width:.....101.00"

CAPACITIES

Fresh water tank (gals.):...72.00  
Gray water tank (gals.):...80.00  
Black water/toilet tank (gals.):.....30.00  
Propane (lbs.):.....83  
Propane (gals.):.....19  
Water heater (gals.):.....10.00

TIRES

Tire size (front):.....255/80R22.5G  
Tire size (mid):.....  
Tire size (rear):.....255/80R22.5G

\*\*\*Some dimensions may be rounded and may vary from the acutal dimensions\*\*\*  
\*\*\*Weights may be estimated calculations and may vary from the actual weight  
- refer to the vehicle weight labels for actual weights\*\*\*  
Floorplans, features and specifications are subject to change without notice.