



## Redhawk



Serial #: 1UJLCBM1TXB4080  
Model: 24B REDHAWK MHC  
VIN#: 1FDXE4FN6TDD12312  
Model Year: 2026 Dealer Name: NATIONAL INDOOR RV CENTERS  
11280 N SOLAR CANYON WAY  
SUPRISE, AZ 85379  
USA

### Standard Equipment

### Optional Equipment

#### THE FOLLOWING ITEMS ARE STANDARD ON THIS MODEL

#### OPTIONAL EQUIPMENT INSTALLED ON THIS VEHICLE

##### STANDARD EXTERIOR EQUIPMENT

- Front E-450 chassis
- GVWR: 14,000 lb
- 7.3L V-8 325 HP engine with 450 ft. lb. torque
- 6-speed TorqShift® series transmission with over 210-hp alternator
- Catalytic converter, theft deterrent
- E-rated highway tires: LT225/75R16
- Power pressure monitoring system (TPMS)
- Power windows and door locks
- 7,500 lb hitch with 750 lb tongue capacity and 7-pin plug
- 12V chassis battery
- Sweet drive and passenger seats (24B, 31F)
- Remote-controlled, slide-view mirrors
- Stronghold® 1" roof, floor and sidewalls
- Aluminum construction (11'24" max roof, 11'9" max floor, R-5 max walls)
- Tufflex™ PVC laminated roof
- Aluminum running boards
- Aluminum extruded walls with vinyl graphics
- Leveling jack legs
- Frameless windows
- Remote keyless cab entry
- Entrance door with industry's largest travel-view window
- Electric-powered entrance step with integrated house battery compartment
- (2) 180L high-capacity, marine-grade exterior storage bins
- Slide-out awning(s)
- Pass-through storage compartment with light (select models)
- Roof ladder
- Prep for satellite dish
- Cable TV hookup with RG-6 coax
- 4,000W generator
- Solar prep
- 12V house battery
- Trailer swivel with reverse polarity protection
- 12.2 gal propane tank (41 lb)
- LP quick-connect hookup
- Exterior utility center
- 30 amp shore power system
- Outside shower
- 12V demand water pump
- Water filtration system

##### STANDARD INTERIOR EQUIPMENT

- Tilt steering wheel
- Cruise control
- Hi-static floor
- Electronic stability control
- Traction control
- Automatic emergency braking (AEB)
- Automatic transmission (optional)
- Auxiliary start switch
- Power windows and door locks
- Driver and passenger airbags
- Overhead bunk with 750 lb capacity and safety net
- 84 in ceiling height
- High-intensity, recessed LED ceiling lights
- LED interior lighting
- Hardwood cabinet doors and drawer fronts
- Ball-bearing drawer guides
- Interior entrance door grab handle
- Interior command center
- Premium sound system
- 15,000 BTU ducted A/C
- 30,000 BTU auto-ignition furnace
- Electric fireplace (24B)
- Electric water heater (24B)
- 2-point lap safety belts in all designated seating locations
- Layco exclusive, easy-operation legless dinette table
- 2-point lap safety belts in all designated seating locations
- LED auto system
- 12V 100 amp battery
- All-in-one cooktop and oven
- Residential-size microwave
- Stainless steel kitchen sink
- Pop-up charging station with 120V outlet and USB plugs
- LED-lit pressed countertops
- Queen-size bed with bedspread (24B, 29XK, 31F)
- Queen-size Power Murphy Bed (26M)
- USB power outlets (24B, 29XK, 31F)
- USB port in cabinet over bed (24B, 26M)
- Under-bed storage (select models)
- Large wardrobes
- 30 amp shore power exclusive 300 lb capacity each (31F)
- Shower with decorative ABS surround and skylight
- Stainless steel bathroom sink
- Toilet with foot flush
- 30 amp shore power
- Smoke alarm
- Carbon monoxide detector
- Fire extinguisher

##### CUSTOMER VALUE PACKAGE

- Jride® Computer-balanced drierail, standard front and rear stabilizer bars, Heliwig® helper springs, rubber isolation body mounts
- 100% factory-installed, tinted glass front cap
- Automotive-bonded panoramic window in front cap with power shade
- Heated holding tanks (12V pads)
- 12V power windows (optional LED lights)
- Black holding tank sprayer
- Sony® infotainment center with Bluetooth, Apple CarPlay and Android Auto™
- LED HD Smart TV in living area

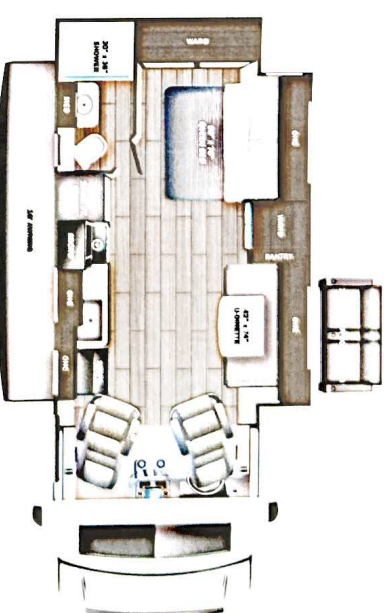
UNIT TOTAL

176,822.00

DEALER INSTALLED OPTIONS

Manufacturer's Suggested Retail Price \$176,822.00

TOTAL AMOUNT DOES NOT INCLUDE STATE AND LOCAL TAXES ON LICENSE FEES. THE PRICE SHOWN ABOVE MAY OR MAY NOT BE REPRESENTATIVE OF THE ACTUAL SELLING PRICE OF SIMILAR RECREATIONAL VEHICLES IN YOUR AREA.



#### DIMENSIONS

Exterior height: 139.00"  
Exterior width: 100.00"

#### CAPACITIES

Fresh water tank (gals.): 42.50  
Gray water tank (gals.): 40.00  
Black water/toilet tank (gals.): 31.00  
Propane (lbs.): 41  
Propane (gals.): 9  
Water heater (gals.): 5.00

#### TIRES

Tire size (front): LT225/75R16E  
Tire size (mid): LT225/75R16E  
Tire size (rear): LT225/75R16E

\*\*\*Some dimensions may be rounded and may vary from the actual dimensions\*\*\*  
\*\*\*Weights may be estimated calculations and may vary from the actual weight\*\*\*  
- refer to the vehicle weight labels for actual weights\*\*\*  
Floorplans, features and specifications are subject to change without notice.

