

Anthem



Serial #: 1JSMEACV1T14V8051  
Model: 44V ANTHEM MHA  
VIN#: 4UZFCHFE4TCWF5789  
Model Year: 2026 Dealer Name: National Indoor RV Centers  
1000 Aubrey Dr.  
Lebanon, TN 37090  
USA



Standard Equipment

Optional Equipment

THE FOLLOWING ITEMS ARE STANDARD ON THIS MODEL

OPTIONAL EQUIPMENT INSTALLED ON THIS VEHICLE BY MANUFACTURER

STANDARD EXTERIOR EQUIPMENT

- Spartan® K2 raised-rail chassis
- Cummins® L9 turbocharged 450 HP engine with 1,250 lb. ft. torque at 1,400 RPM
- Allison® 3,000 MH 6-speed transmission
- Collision avoidance system with collision warning, adaptive cruise control and electronic stability control
- Side-mounted, parallel-airflow radiator
- 170 amp alternator
- Reyco® Granning® front axle with independent front suspension, integrated anti-sway bar and custom-tuned Koni® shocks- 20,000 lb. rating (17,000 lb. on 37K)
- Meritor® rear axle - 20,000 lb. rating (N/A 37K)
- Hendrickson® rear axle - 24,000 lb. rating (37K)
- Tag axle with one-touch manual air dump - 12,000 lb. rating (N/A 37K)
- ABS disc brakes on front axle, drum brakes on drive and tag axle
- 4.88 rear axle ratio (4.78 on 37K)
- Michelin® XZA 365/70R 22.5 in. tires (front) and XZA 315/80R 22.5 in. tires (rear)
- Tire pressure monitoring system (TPMS)
- Equalizer™ hydraulic automatic coach leveling
- Valid™ Truline air leveling system with auxiliary air compressor
- 150 gal. fuel tank with dual fills (125 gal. on 37K)
- 15 gal. DEF tank with dual fills
- Spartan® Safehaul tow vehicle air brake system
- 15,000 lb. hitch with 7-pin plug (10,000 lb. on 37K)
- Onan® 10,000W diesel generator, with automatic start, on powered slide-out tray
- Victron 3,000W pure sine wave inverter with LED screen
- (4) L16 AGM batteries (6V/390 amp hrs. ea.)
- (2) 200W solar panels
- 50 amp power cord on electric powered reel
- Bergstrom dual-zone HVAC system
- (3) 15,000 BTU A/C units with heat pumps and condensation drain system (2 units on 37K)
- Aqua-Hot® 450D hydronic water and heating system with in-floor heat throughout and engine preheat
- Sani-Con® macerator holding tank dump system with manual gate valves and manual backup
- Hot and cold water hook-up in front cap area with 30 ft. quick-disconnect hose
- Water softener prep in driver-side compartment
- Water hose with electric reel
- Dual roof-mounted Girard® Vision dual-pitched patio awnings with LED lights
- Girard® power entrance door awning with LED lights
- Girard® Ultra slideout awnings
- Girard® Ultra power window awnings
- Lit grab handle with doorbell and keypad system for keyless entry
- Exterior 43 in. Samsung® QLED 4K UHD Smart TV with tilt, swivel, and extend adjustment
- Exterior JBL® soundbar with USB port and receptacle
- Blind-spot monitoring indicators in chrome, heated, remote-control side-view mirrors
- LED accent lights under all slideout rooms
- Starlink satellite internet system
- Winegard® TRAV'LER satellite dish DIRECTV® - standard with USA option
- Winegard® Rayzar Automatic powered TV antenna
- Winegard® Wi-Fi Ranger™ Wi-Fi extender
- 2.8 cu. ft. exterior refrigerator/freezer on slideout tray (N/A 37K)
- Push-button, power-unlatching baggage doors with LED indicator light

STANDARD INTERIOR EQUIPMENT

- Valid™ 15 in. digital dash with quad core graphics processor, on-board diagnostics and ability to display traditional instrument cluster, 360° camera system or GPS navigation
- Delta Mobile Systems® aiDARS™ 1X active 360° surround view system with 6 smart radar sensors and 6 HD cameras displayed on digital dash screen
- Valid™ infotainment system with 15 in. touchscreen, Sygic navigation, Bluetooth®, Sirius XM™ and AM/FM tuner, integrated camera control, house mode whole-coach audio distribution and integrated VegaTouch coach control
- 4.3 in. infotainment control touchscreen in passenger console
- E-Z Steer™ adjustable power steering assist
- Leather steering wheel with integrated controls for screen selection, instrument cluster navigation, media source selection, cruise, wipers and Bluetooth® phone functionality
- Power tilt and telescoping steering column
- JBL® premium audio 11-speaker sound system with amplifier, speakers and DVC subwoofer in cab
- All-in-one automotive antenna for AM/FM/Sirius/GPS dash radio system
- Ultra-Vision® one-piece wrap-around tinted windshield
- Rain-sensing windshield wipers
- 32 in. Samsung® QLED 4K UHD Smart TV in front overhead
- Heated and cooled leather driver and passenger seats with powered 6-way adjustment, lumbar, recline and footrest functions
- Firefly multiplex system with 10 in. VegaTouch touchscreen, for complete integration of coach controls, with remote monitoring and control (mobile app available)
- Hardwood cabinetry and stiles throughout with dovetail drawer construction
- Spyder 3.5 in. touchscreen switches throughout
- 50 in. Samsung® QLED 4K UHD Smart TV in living area
- Bose® sound bar with subwoofer and universal remote control in living area
- Premium Italian leather Villa furniture
- Powered solar day and blackout night shades
- Portable Shark® vacuum cleaner and Dirt Devil central vacuum system with in-wall dust pan
- Aire-Secure™ travel locks for all pocket doors
- Window with push out lever operation and screen
- Stainless steel residential refrigerator
- Induction cooktop with matching wood cover
- 1.7 cu. ft. convection microwave with air fryer function
- Fisher & Paykel dishwasher (optional on 37K)
- 43 in. Samsung® Crystal UHD Smart TV in bedroom
- Bose® sound bar with universal remote control in bedroom
- Porcelain tile shower with skylight and clear glass shower door
- Thetford® macerator toilet in main bath
- Thetford® macerator toilet in mid bath (44D, 44R, 44W)
- Thetford® toilet in mid bath (44B)
- Splendide stackable washer and dryer
- Storage safe

Base price 813,855.00  
PASHMINA DECOR n/c  
DOVE WHITE CABINETRY 30.00  
DOVE WHITE FRONT  
OVERHEAD ACCENT WOOD n/c  
SAV WOOD TORTORA TILE 2,843.00  
BLACK ROSE PAINT 30.00  
USA STANDARDS n/c  
26 FR XCR 52000 320" 450  
TAG 2024EPA TF112 n/c  
DISHWASHER n/c  
12.5K GENERATOR 2,243.00  
NON-BLACKOUT n/c  
TRAV'LER DIRECT TV  
SATELLITE DISH n/c  
STARLINK SATELLITE  
INTERNET SERVICE n/c  
AGM BATTERY -  
FREIGHTLINER n/c  
BOOTH DINETTE 1,493.00  
THEATER SEATING SOFA D/S n/c  
MEDIA CENTER WITH SHELF 743.00  
KING INSTANT COMFORT  
MATTRESS n/c  
HEADBOARD,FRAME WITH  
INSERT n/c  
DOUBLE LAV SINK IN MAIN  
BATHROOM 893.00

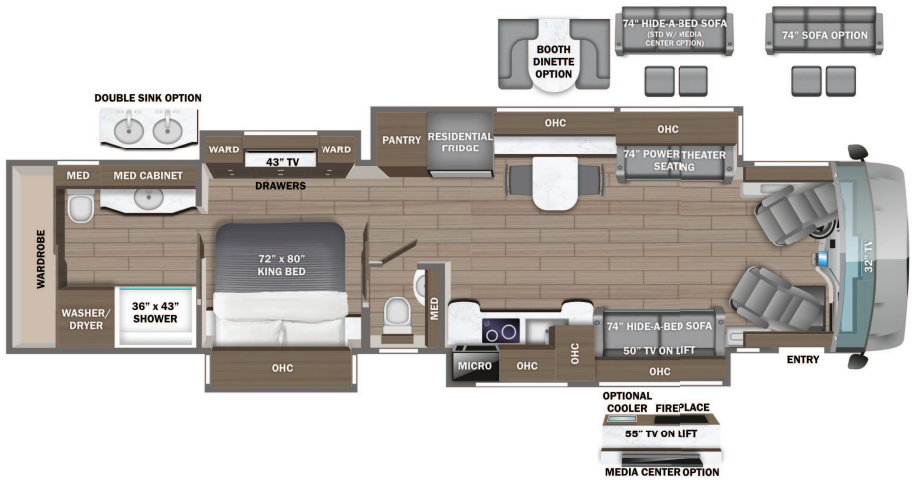
UNIT TOTAL 822,130.00

DEALER INSTALLED OPTIONS

Manufacturer's Suggested Retail Price

\$822,130.00

TOTAL AMOUNT DOES NOT INCLUDE STATE AND LOCAL TAXES OR LICENSE FEES. THE PRICE SHOWN ABOVE MAY OR MAY NOT BE REPRESENTATIVE OF THE ACTUAL SELLING PRICE OF SIMILAR RECREATIONAL VEHICLES IN YOUR AREA.



U

DIMENSIONS

Exterior height:.....152.00"  
Exterior width:.....101.00"

CAPACITIES

Fresh water tank (gals.):..100.00  
Gray water tank (gals.):....62.00  
Black water/toilet tank (gals.):.....41.00  
Propane (lbs.):.....0  
Propane (gals.):.....0  
Water heater (gals.):.....0.00

TIRES

Tire size (front):.....365/70R22.5  
Tire size (mid):.....315/80R22.5  
Tire size (rear):.....315/80R22.5

\*\*\*Some dimensions may be rounded and may vary from the acutal dimensions\*\*\*  
\*\*\*Weights may be estimated calculations and may vary from the actual weight  
- refer to the vehicle weight labels for actual weights\*\*\*  
Floorplans, features and specifications are subject to change without notice.