



Anthem



Serial #: 1JSMEACVXR14D8076
Model: 44D ANTHEM MHA
VIN#: 4VZAU1D11RC095311
Model Year: 2024 Dealer Name: National Indoor RV Centers
1000 Aubrey Dr.
Lebanon, TN 37090
USA

Standard Equipment

THE FOLLOWING ITEMS ARE STANDARD ON THIS MODEL
AT NO EXTRA CHARGE

STANDARD EXTERIOR EQUIPMENT

- Spartan® K2 raised-rail chassis
- Cummins® L9 turbocharged 450 HP engine with 1,250 lb. ft. torque at 1,400 RPM
- Allison® 3,000 MH 6-speed transmission
- Side-mounted, parallel-airflow radiator
- 170 amp alternator
- Meritor® front axle with independent front suspension, integrated anti-sway bar and custom-tuned Koni® shocks- 20,000 lb. rating
- Meritor® rear axle - 20,000 lb. rating (N/A 37K)
- Hendrickson® rear axle - 24,000 lb. rating (37K)
- Tag axle with one-touch manual air dump - 12,000 lb. rating (N/A 37K)
- ABS disc brakes on front axle, drum brakes on drive and tag axle
- 4.88 rear axle ratio (4.78 on 37K)
- Michelin® XZA 365/70R 22.5 in. tires (front) and XZA 315/80R 22.5 in. tires (rear)
- Tire pressure monitoring system (TPMS) with temperature monitoring
- Equalizer™ hydraulic automatic coach leveling
- Valid™ Truline air leveling system with auxiliary air compressor
- Remote air connection
- 150 gal. fuel tank with dual fills (125 gal. on 37K)
- 15 gal. DEF tank with dual fills (single fill on 37K, 44D, 44R)
- Spartan® Safehaul tow vehicle air brake system
- 15,000 lb. hitch with 7-pin plug (10,000 lb. on 37K)
- Onan® 10,000W diesel generator, with automatic start, on powered slide-out tray
- 3,000W pure sine wave inverter
- (4) L16 AGM batteries (6V/390 amp hrs. ea.)
- (2) 200W solar panels
- 50 amp power cord on electric powered reel
- Bergstrom dual-zone HVAC system
- (3) 15,000 BTU A/C units with heat pumps and condensation drain system (2 units on 37K)
- Aqua-Hot® 450D hydronic water and heating system with in-floor heat throughout and engine preheat
- Sani-Con® macerator holding tank dump system with manual gate valves and manual backup
- Hot and cold water hook-up in front cap area with 30 ft. quick-disconnect hose
- Water hose with electric reel
- Dual roof-mounted Girard® Vision dual-pitched patio awnings with LED lights
- Girard® power entrance door awning with LED lights
- Girard® Ultra slideout awnings
- Girard® Ultra power window awnings
- Lit grab handle with doorbell and keypad system for keyless entry
- 43 in. Samsung® QLED 4K UHD Smart TV with tilt, swivel, and extend adjustment
- Chrome, heated, remote-control, side-view mirrors with blind-spot indicators
- LED accent lights under all slideout rooms
- Starlink satellite internet system
- Winegard® TRAV'LER satellite dish DIRECTV® - standard with USA option
- Winegard® Rayzar Automatic powered TV antenna
- Winegard® Wi-Fi Ranger™ Wi-Fi extender
- (2) power slideout basement storage trays (single tray on 37K)
- 2.8 cu. ft. exterior refrigerator/freezer on slideout tray (N/A 37K)
- Push-button, power-unlatching baggage doors with LED indicator light

STANDARD INTERIOR EQUIPMENT

- Valid™ 15 in. digital dash with quad core graphics processor, on-board diagnostics and ability to display traditional instrument cluster, 360° camera system or GPS navigation
- Delta Mobile Systems® aiDARS™ 1X active 360° surround view system with 14 smart radar sensors and 6 HD cameras displayed on digital dash screen
- Valid™ infotainment system with 15 in. touchscreen, Sygic navigation, Bluetooth®, Sirius XM™ and AM/FM tuner, integrated camera control, house mode whole-coach audio distribution and integrated VegaTouch coach control
- 4.3 in. infotainment control touchscreen in passenger console
- E-Z Steer™ adjustable power steering assist
- Leather steering wheel with integrated controls for screen selection, instrument cluster navigation, media source selection, cruise, wipers and Bluetooth® phone functionality
- Power tilt and telescoping steering column
- JBL® premium audio 11-speaker sound system with amplifier, speakers and DVC subwoofer
- All-in-one automotive antenna for AM/FM/Sirius/GPS dash radio system
- Ultra-Vision® one-piece wrap-around tinted windshield
- Rain-sensing windshield wipers
- 32 in. Samsung® QLED 4K UHD Smart TV in front overhead
- Heated leather driver and passenger seats with powered 6-way adjustment, lumbar, recline and footrest functions
- Firefly multiplex system with 10 in. VegaTouch touchscreen, for complete integration of coach controls, with remote monitoring and control (mobile app available)
- Spyder 3.5 in. touchscreen switches throughout
- 50 in. Samsung® QLED 4K UHD Smart TV
- Bose® sound bar with subwoofer and universal remote control
- Premium Italian leather Crown Compass furniture
- Powered solar day and blackout night shades
- Central vacuum system
- Aire-Secure™ travel locks for all pocket doors
- Window with push out lever operation and screen
- Stainless steel residential refrigerator
- Induction cooktop with matching wood cover
- 1.9 cu. ft. convection microwave oven
- Fisher & Paykel dishwasher (optional on 37K)
- 32 in. Samsung® LED 4K UHD Smart TV
- Bose® sound bar with universal remote control
- Porcelain tile shower with skylight and clear glass shower door
- Thetford® macerator toilet in main bath
- Thetford® macerator toilet in mid bath (44D, 44R, 44W)
- Thetford® Aria china toilet in mid bath (44B)
- Separate washer and dryer
- Storage safe

Optional Equipment

OPTIONAL EQUIPMENT INSTALLED ON THIS VEHICLE
BY MANUFACTURER

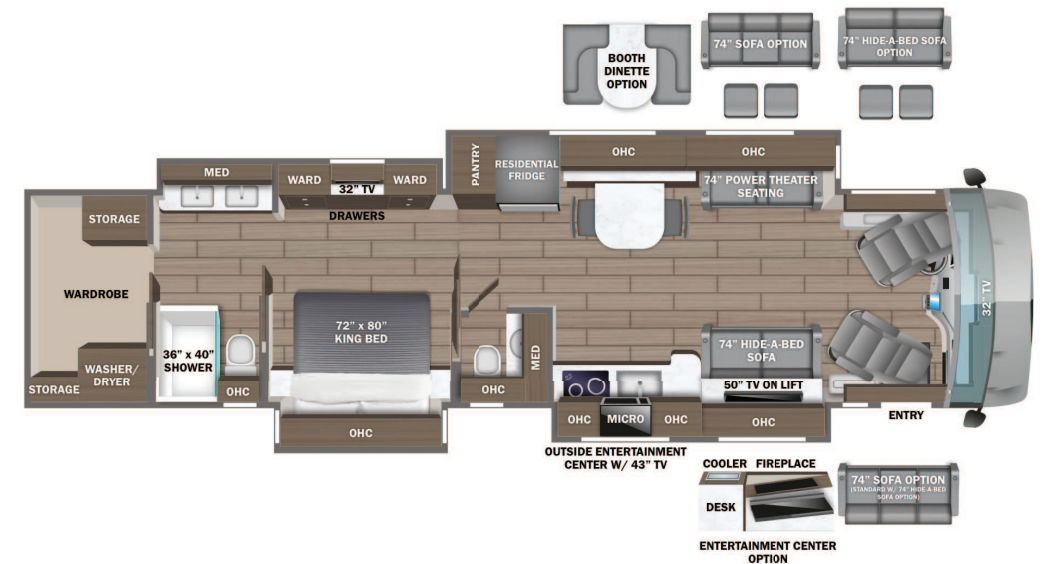
Base price 746,355.00
BAVARIAN n/c
STONEWALL GRAY CABINETRY 30.00
LINEN FRONT OVERHEAD
ACCENT WOOD n/c
MARBLE ATTACHE CALCATTA
TILE 30.00
CRIMSON SNOW PAINT 30.00
USA STANDARDS n/c
24 SP 52000 320" L9 450
TAG AXLE
2021EPA/2021CARB RA08 n/c
DISHWASHER n/c
10K GENERATOR n/c
WINEGARD TRAV'LER
SATELLITE ANTENNA W/DISH
NETWORK 113.00
AGM BATTERY n/c
BOOTH DINETTE 1,643.00
THEATER SEATING SOFA D/S n/c
SOFA WITH TV LIFT n/c
KING SLEEP NUMBER
MATTRESS n/c
HEADBOARD,FRAME WITH
FABRIC INSERT n/c
Ins Linen cabinets;
doors,trim,facia remain
Stonewall Gray 195.00

UNIT TOTAL 748,396.00

DEALER INSTALLED OPTIONS

Manufacturer's Suggested Retail Price \$748,396.00

TOTAL AMOUNT DOES NOT INCLUDE STATE AND LOCAL TAXES OR LICENSE FEES. THE PRICE SHOWN ABOVE MAY OR MAY NOT BE REPRESENTATIVE OF THE ACTUAL SELLING PRICE OF SIMILAR RECREATIONAL VEHICLES IN YOUR AREA.



DIMENSIONS

Exterior height:.....155.00"
Exterior width:.....101.00"

CAPACITIES

Fresh water tank (gals.):..100.00
Gray water tank (gals.):....62.00
Black water/toilet tank (gals.):.....41.00
Propane (lbs.):.....0
Propane (gals.):.....0
Water heater (gals.):.....0.00

TIRES

Tire size (front):.....365/70R22.5
Tire size (mid):.....315/80R22.5
Tire size (rear):.....315/80R22.5

Some dimensions may be rounded and may vary from the acutal dimensions

***Weights may be estimated calculations and may vary from the actual weight

- refer to the vehicle weight labels for actual weights***

Floorplans, features and specifications are subject to change without notice.